

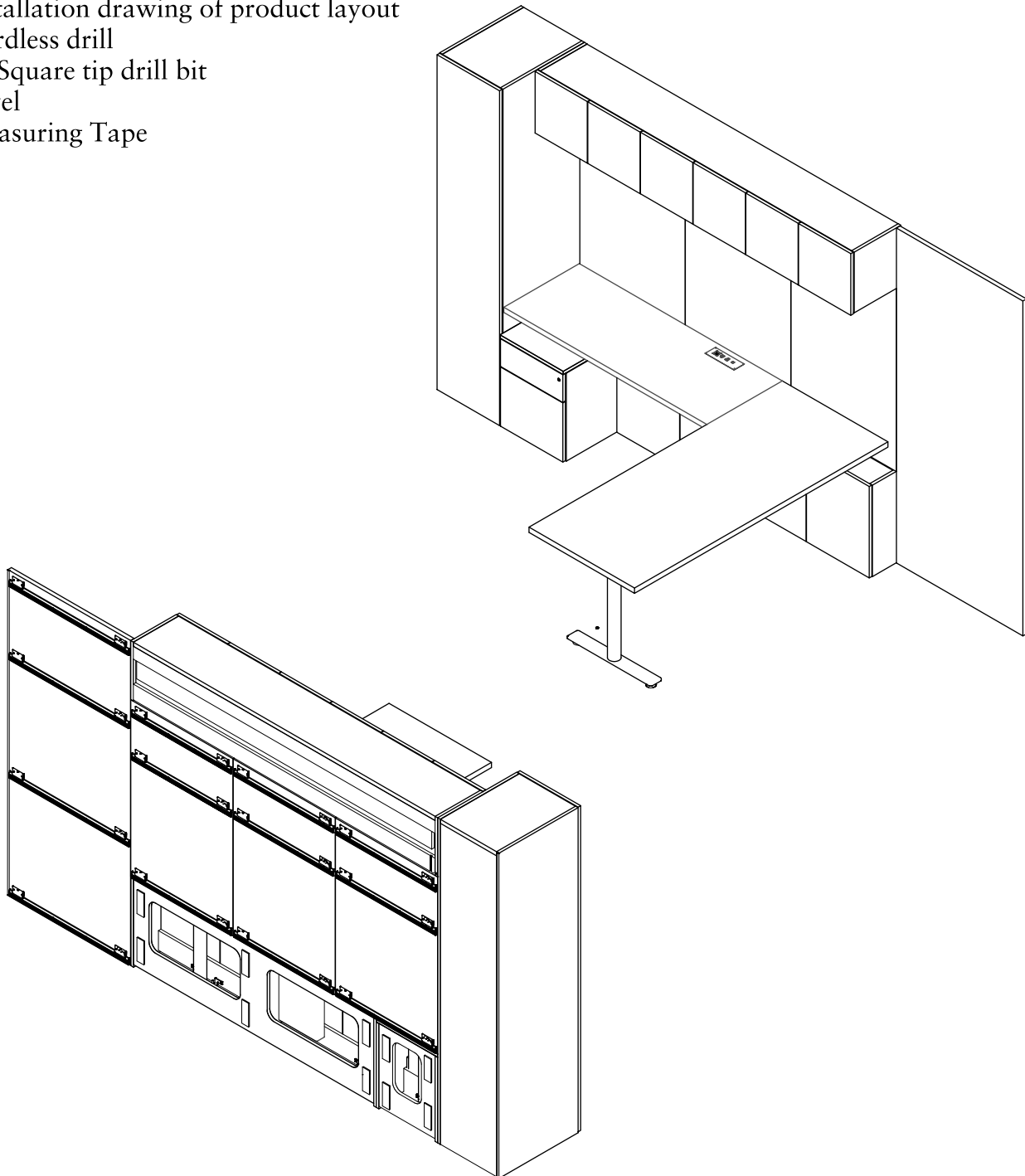
ROS-GRW Geiger One Direct To Wall Installation

1BS911

Note: Details apply, however the actual configuration of your product may vary from what is depicted here.

Tools Required

- o Installation drawing of product layout
- o Cordless drill
- o #2 Square tip drill bit
- o Level
- o Measuring Tape



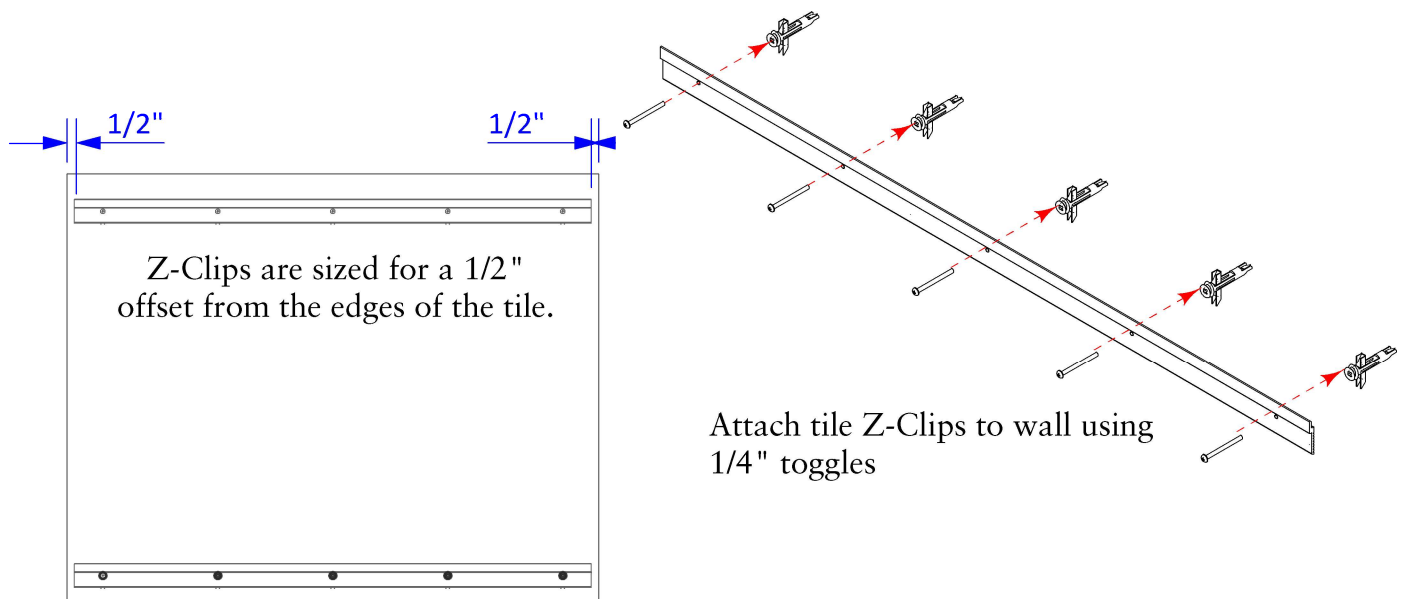
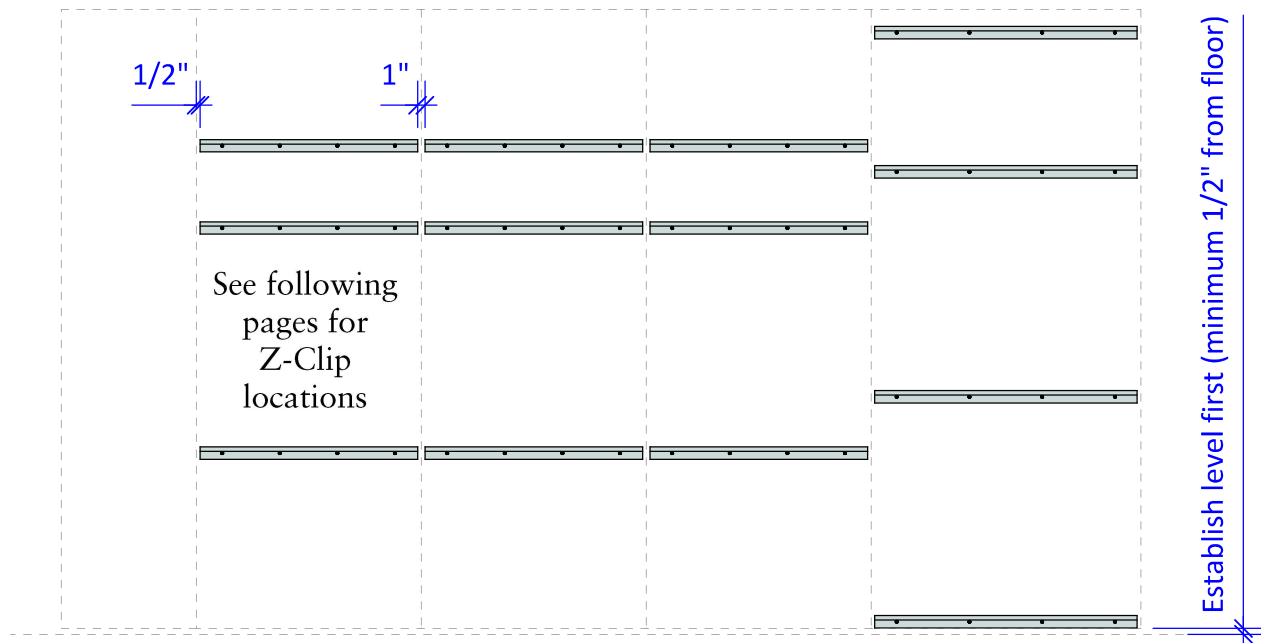
ROS-GRW Geiger One Direct To Wall Installation

1BS911

Note: Details apply, however the actual configuration of your product may vary from what is depicted here.

Mount Tile Z-Clips to Wall.

Tiles come with 3" clips pre-attached. Installing from the bottom up, lift tiles over and onto Z-Clips, firmly seating them.



ROS-GRW Geiger One Direct To Wall Installation

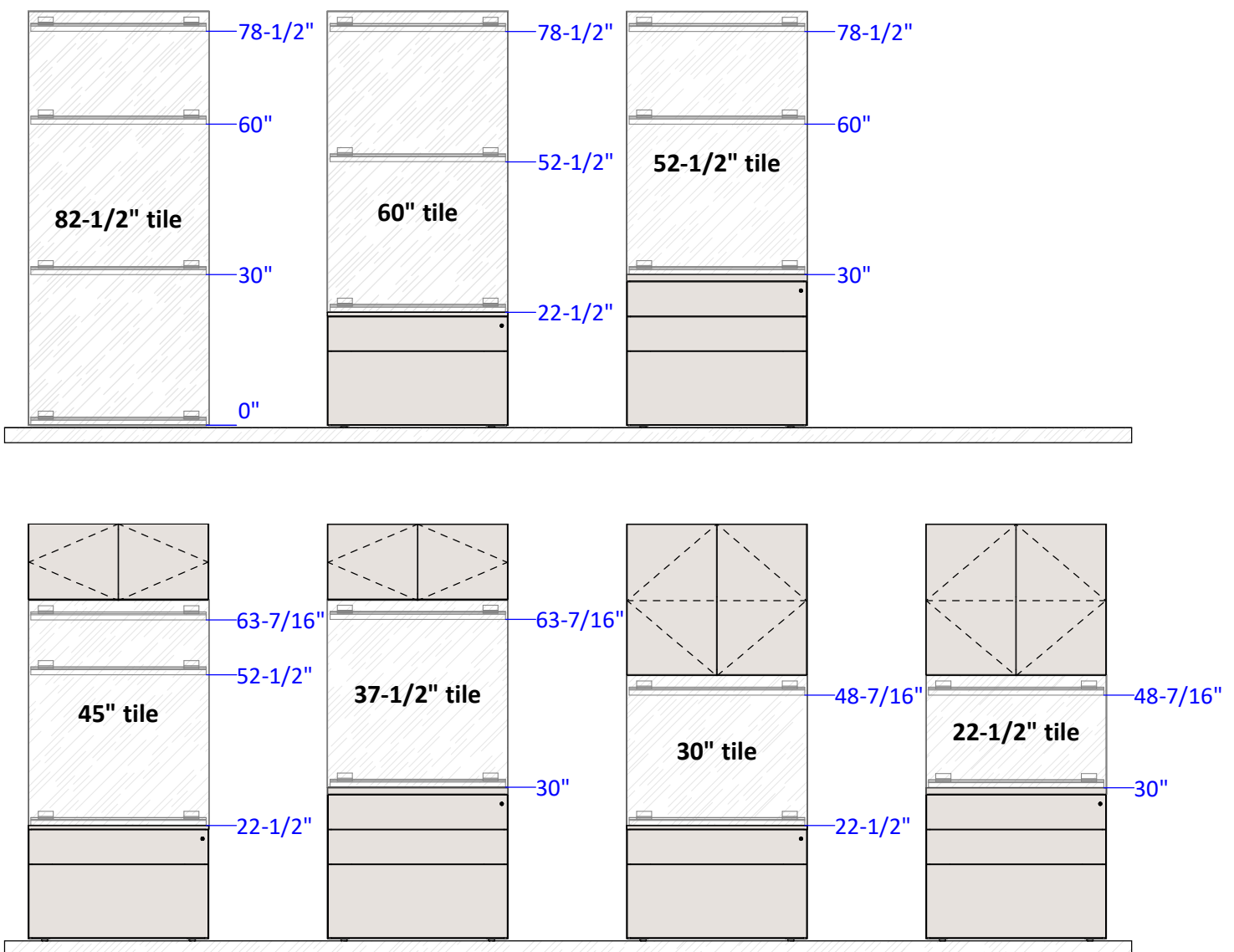
1BS911

Note: Details apply, however the actual configuration of your product may vary from what is depicted here.

Tile Z-Clip Locations

Dimensions listed do not include levelers or leveling . Measure up from where storage cases begin (minimum 1/2").

82-1/2" high overall height



ROS-GRW Geiger One Direct To Wall Installation

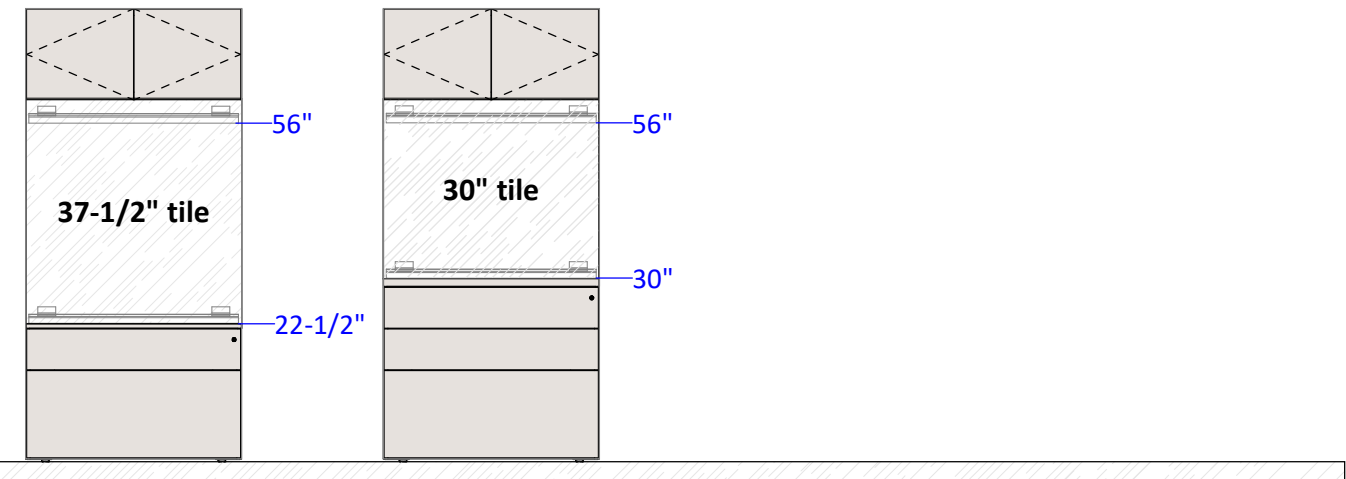
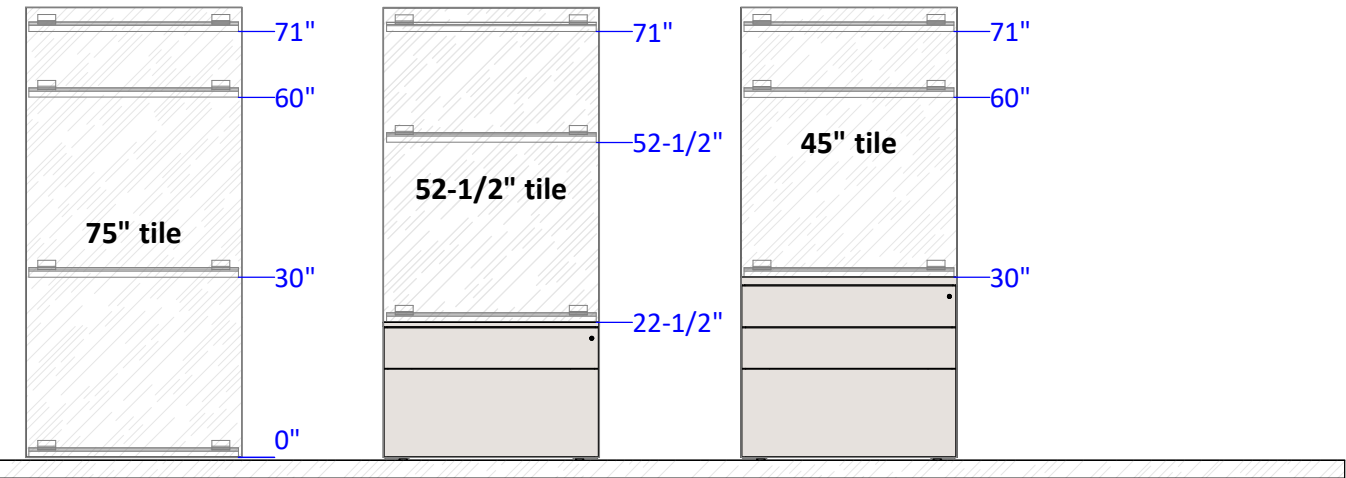
1BS911

Note: Details apply, however the actual configuration of your product may vary from what is depicted here.

Tile Z-Clip Locations

Dimensions listed do not include levelers or leveling . Measure up from where storage cases begin (minimum 1/2").

75 " high overall height



ROS-GRW Geiger One Direct To Wall Installation

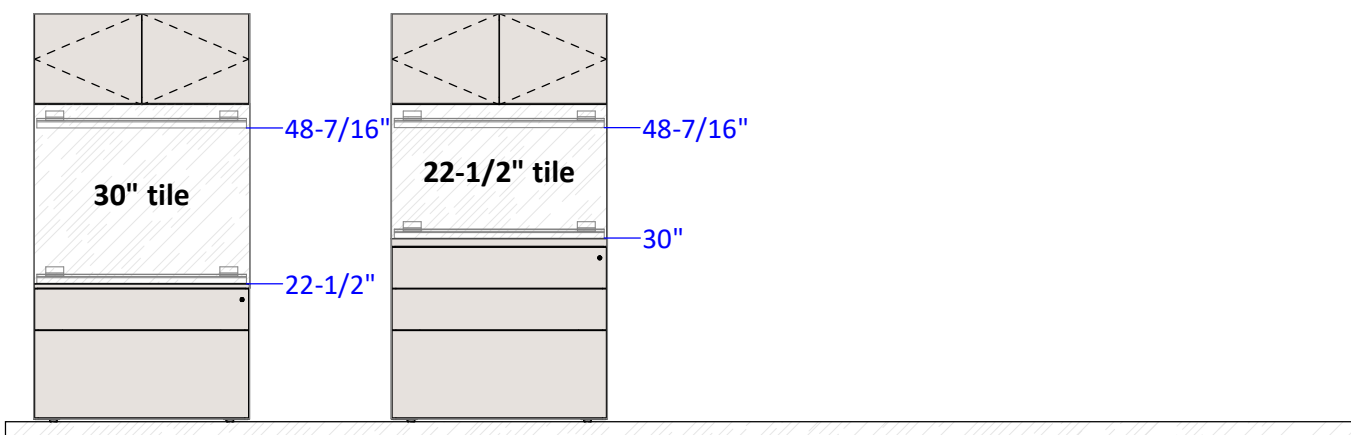
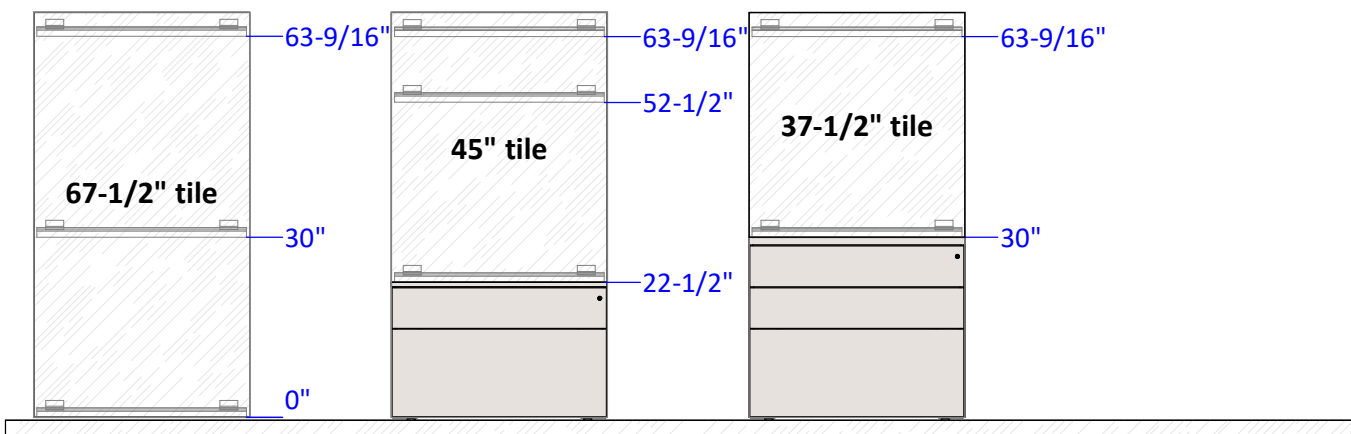
1BS911

Note: Details apply, however the actual configuration of your product may vary from what is depicted here.

Tile Z-Clip Locations

Dimensions listed do not include levelers or leveling . Measure up from where storage cases begin (minimum 1/2").

67-1/2" high overall height



ROS-GRW Geiger One Direct To Wall Installation

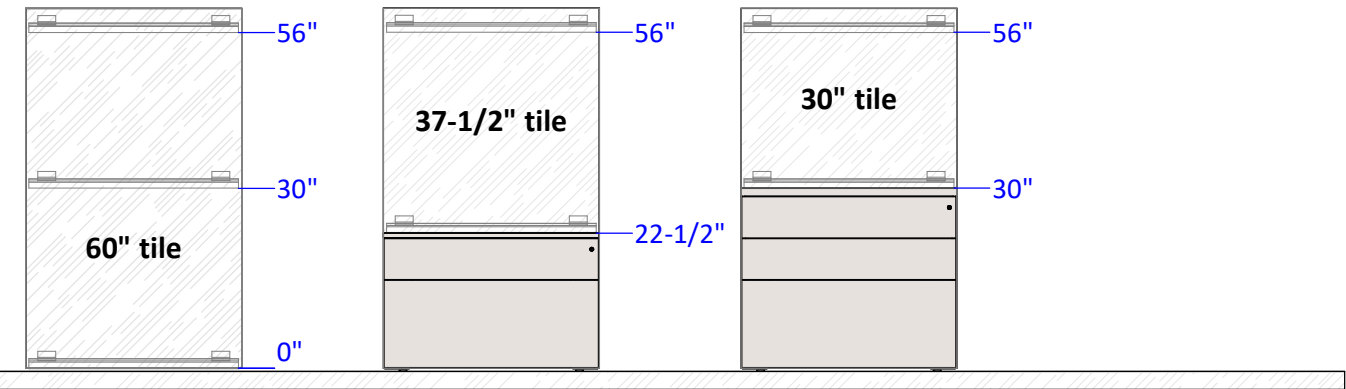
1BS911

Note: Details apply, however the actual configuration of your product may vary from what is depicted here.

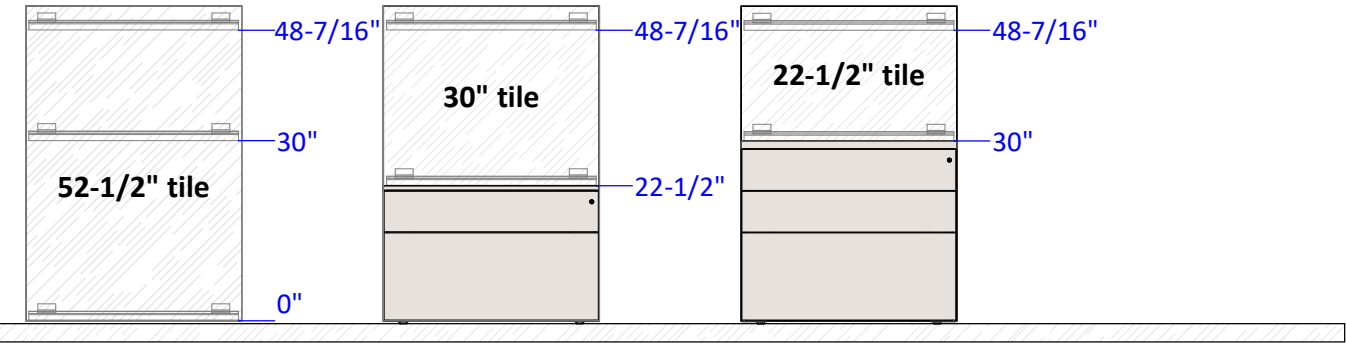
Tile Z-Clip Locations

Dimensions listed do not include levelers or leveling . Measure up from where storage cases begin (minimum 1/2").

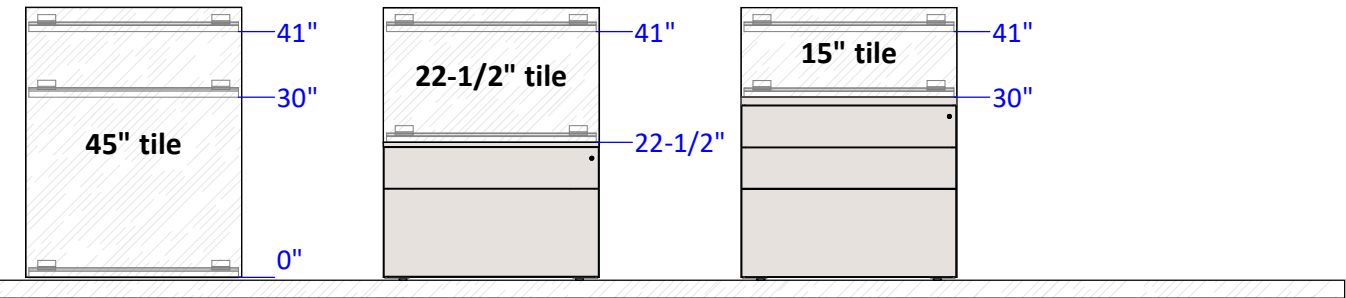
60" high overall height



52-1/2" high overall height



45" high overall height



ROS-GRW Geiger One Direct To Wall Installation

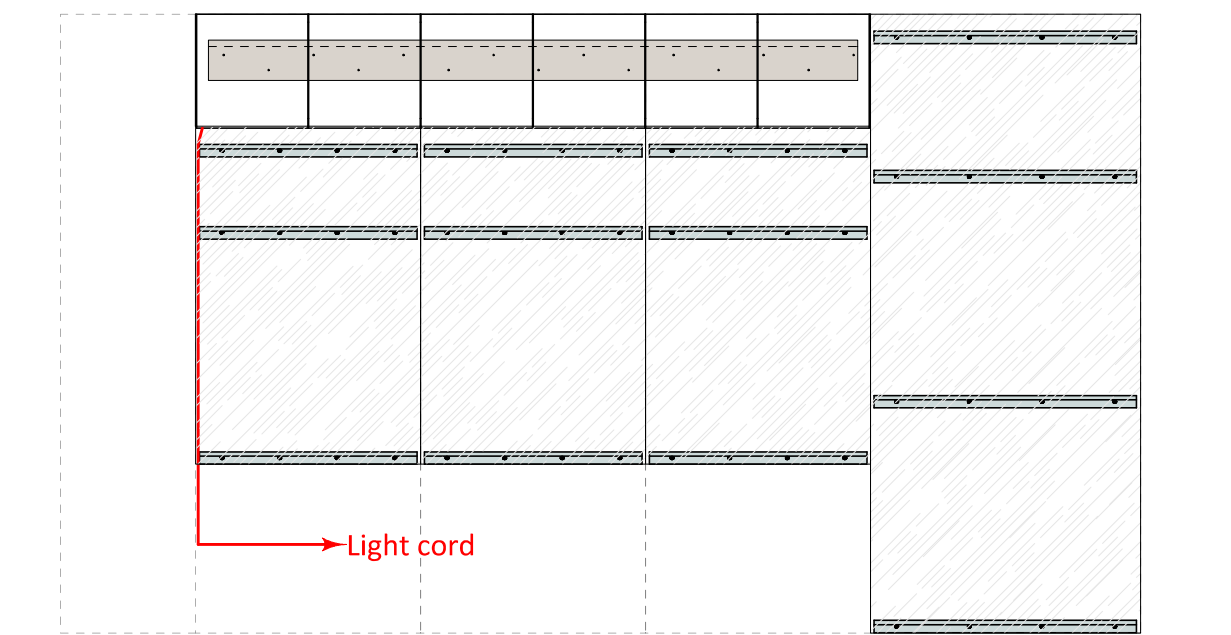
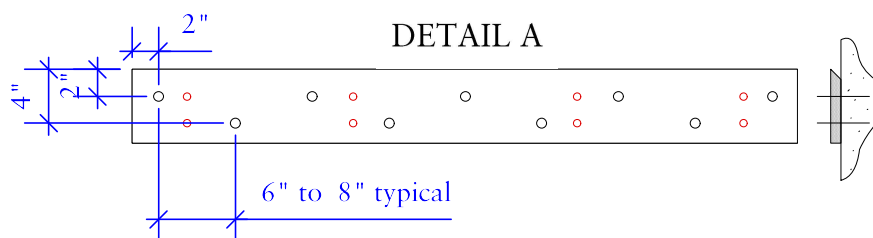
1BS911

Note: Details apply, however the actual configuration of your product may vary from what is depicted here.

Install Wall Mount Overhead(s)

1. Locate Hanging Cleat

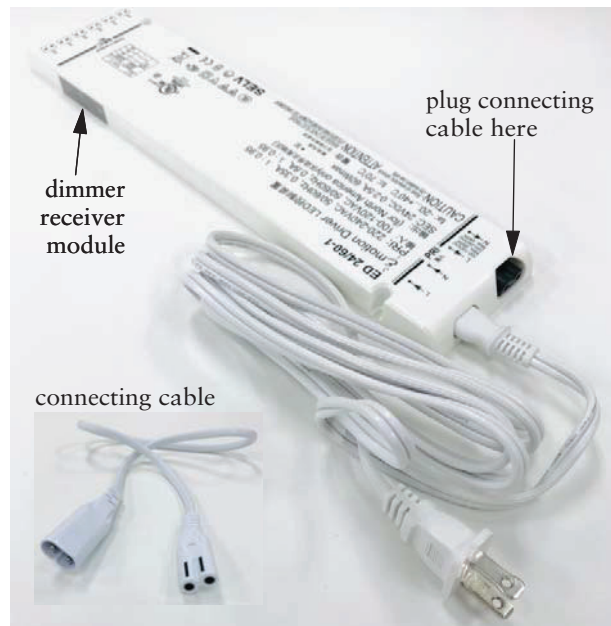
- A. The wall mounting cleat ships attached to the back of the overhead. Measure from the top of the overhead to the bottom of the wall mount cleat and subtract this from where the top of the overhead will be installed and mark a level line. Using a #2 Robertson bit screwdriver, remove the cleat from the cabinet.
- B. Drill the hanging cleat (wall attached portion) for 1/4" toggles. The first screws and/or toggles should be started 2" down and 2" over from the top corner of the cleat on both sides. Stagger the rest 6-8" apart per the detail A below. The top row should be 2" down from the top of the cleat and the bottom row should be 4" down from the top of the cleat. In addition, locate studs and secure with two screws per stud. It is the responsibility of the installer to use appropriate fastening hardware for the existing conditions.
- C. Attach the cleat to the wall, aligning the bottom of the cleat with the marked line.
- D. Lift overhead up and over wall cleat to install.
- E. If the overhead has a light cord, fish the cord over to the end of the overhead and tape to wall alongside tile Z-clips



Note: Details apply, however the actual configuration of your product may vary from what is depicted here.

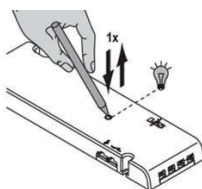
6. Connect Optional Task Light

- Connect the LED light cord that exits through shelf and wall panel and down wall to the power supply. Up to 6 light cords and a total of 16 feet of lighting can be powered by 1 power supply. The power supply includes a dimmer receiver module on the side of the power supply.
- If 2 or 3 power supplies are required, interconnect each power supply to the adjacent power supply with the provided 19" connecting cable.
- Plug the cord of the last power supply into a power outlet.
- Program the dimmer remote control to operate the power supply or supplies using the instructions below.
- Attach the remote control holder to furniture with provided double stick tape or screw.



7. Programming Remote Control

- Briefly press the button of the power supply. The indicator LED is lit blue.



- Keep the 1-channel remote control within reach. Remove any protective foil.

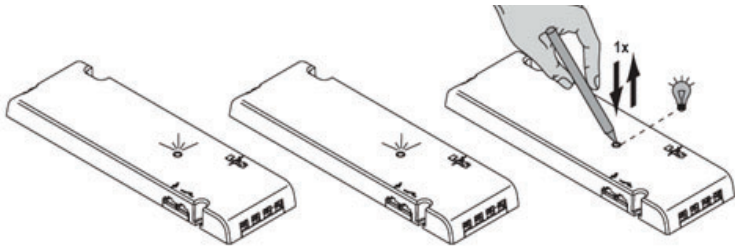


- Remove and reinsert remote battery. Press the ON/OFF button on the remote for at least 5 seconds. If the programming is successful, the LED on the power supply goes out.

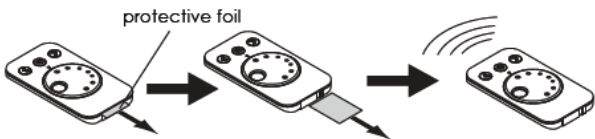
Note: Details apply, however the actual configuration of your product may vary from what is depicted here.

7. Programming Remote Control (continued)

- D. To program multiple power supplies to work with a single remote, briefly press the button of all power supplies that you want to program. The indicator LEDs will be lit blue.

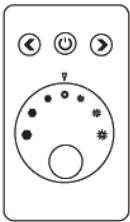


- E. Keep the 1-channel remote control within reach. Remove any protective foil.



- F. Remove and reinsert the remote battery. Press the ON/OFF button for at least 5 seconds. If the programming is successful, the LEDs on the power supplies will go out.

8. Operating Remote Control



Button	Function
ON/OFF	Switching lighting group 1 ON/OFF
Left arrow	Reducing the brightness
Right arrow	Increasing the brightness
Color wheel	Setting the color temperature

- A. Switching the lights ON/OFF
Press button ON/OFF to switch on all luminaires of lighting group 1.
Press the button once more to switch off the lighting group.
- B. Setting the color temperature
Turn the color wheel to set the color temperature in the warm to cold white range.
- C. Setting the brightness
The brightness can be set gradually or continuously.
- D. Gradual Setting (100 % - 75 % - 50 % - 25 % - 0 %)
Press the left arrow button to reduce the brightness gradually.
Press the right arrow button to increase the brightness gradually.
- E. Continuous Setting
Keep the left arrow button pressed to reduce the brightness continuously.
Keep the right arrow button pressed to increase the brightness continuously.

ROSS-GRW GeigerOne Direct To Wall Installation

1BS911

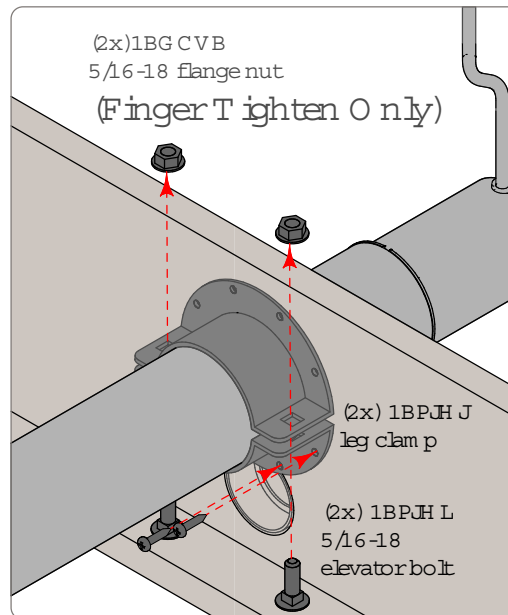
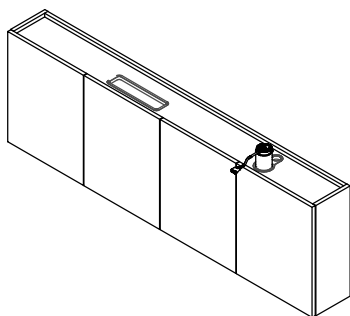
Note: Details apply, however the actual configuration of your product may vary from what is depicted here.

Attach Fixed Height or Adjustable Height Legs to Utility Cabinet

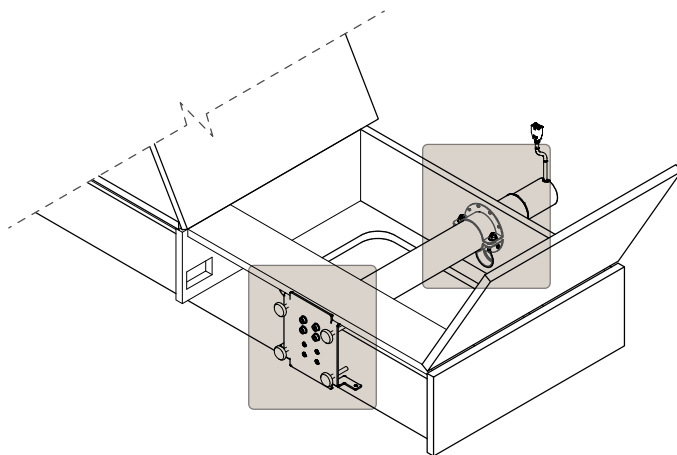
Note: Make sure leg power cord faces out from wall



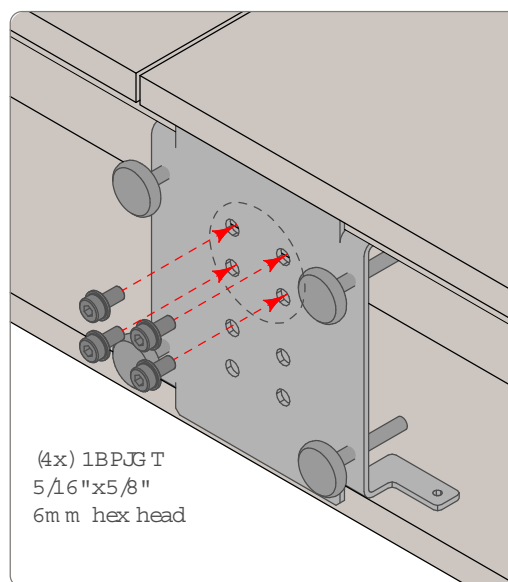
Note: Remove this shipping bolt from the bottom of the legs prior to assembly.



Attach rear leg clamp 1BPJH J to utility top panel using (4x) #8 x 3/4" pan head wood screws



- Attach Rear Leg Clamp to case
- Slide leg through hole to leg bracket.
- Attach leg to bottom bracket
- Attach Front Leg Clamp, H and Tightening

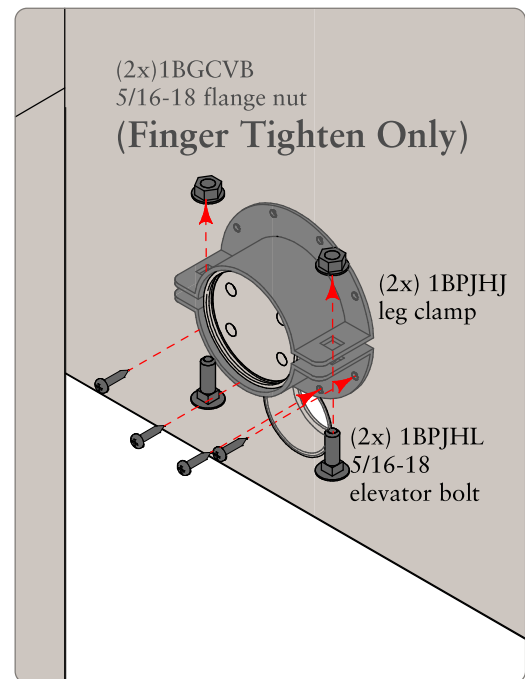
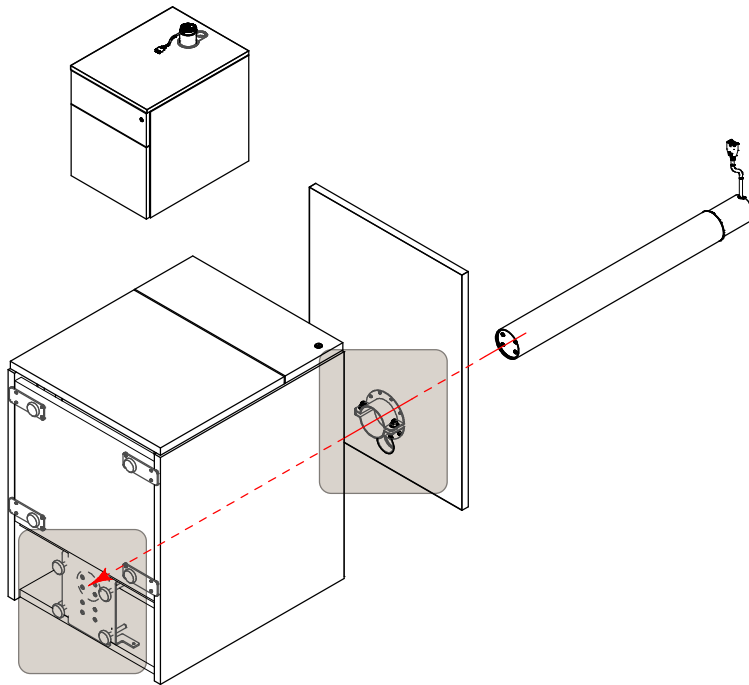


ROS-GRW Geiger One Direct To Wall Installation

1BS911

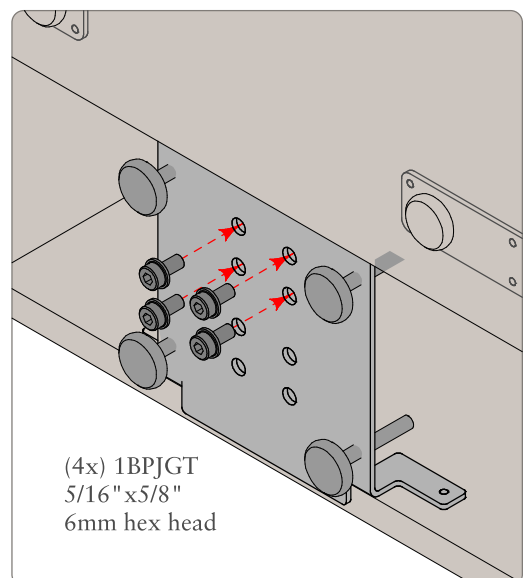
Note: Details apply, however the actual configuration of your product may vary from what is depicted here.

Attach Fixed Height or Adjustable Height Leg in Low Storage



Attach rear leg clamp 1BPJHJ to underside of top using (4x) #8 x 3/4" pan head wood screws

- Attach Rear Leg Clamp to Top
- Slide leg through hole into leg bracket.
- Attach leg to bottom bracket
- Attach Top to Low Storage
- Attach Front Leg Clamp, Hand Tightening

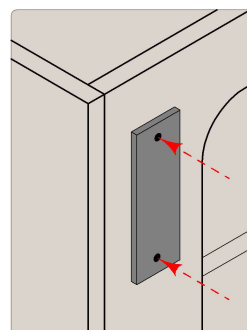
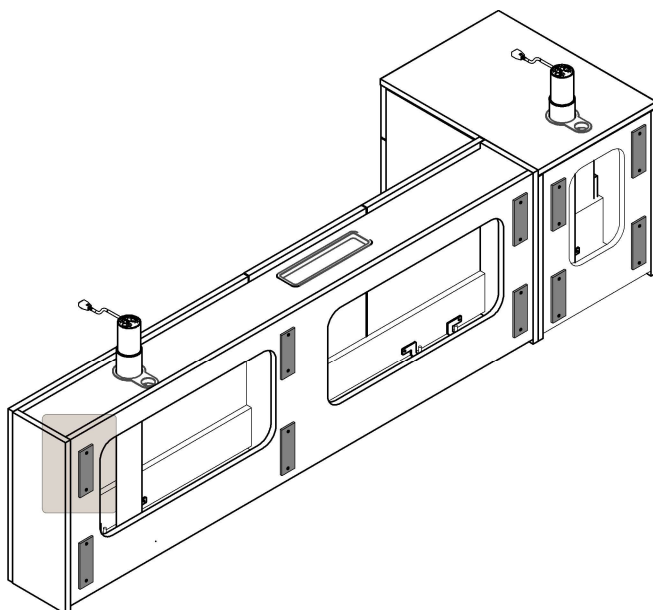


ROS-GRW Geiger One Direct To Wall Installation

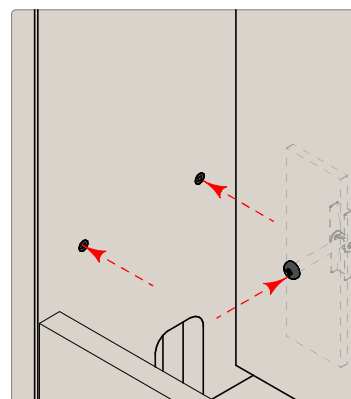
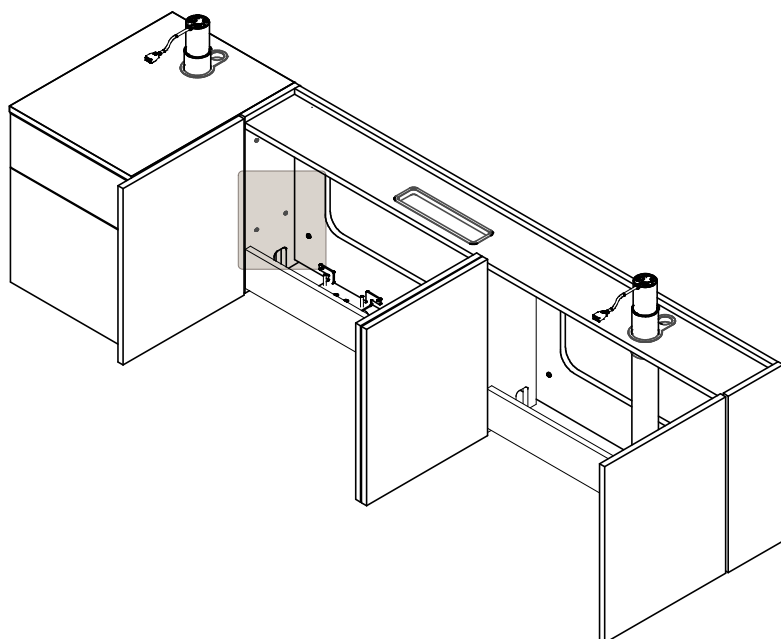
1BS911

Note: Details apply, however the actual configuration of your product may vary from what is depicted here.

Attach 2" x 6" x 1/4" Shims to Back of Utility Cabinet and Pedestals using #8 x 3/4" flat head wood screws (part 55044). Drive screw flush to back of shim.



Place utility cabinet and pedestal in their final positions, level and push snug to the wall. From the Interior of the utility cabinet and pedestals, drill for toggles through the shims. Install toggles in wall and then fasten cabinets to wall. Fasten together adjacent utility cabinet and pedestals Using #8 x 1-1/4" flat head wood screws (part 50163).

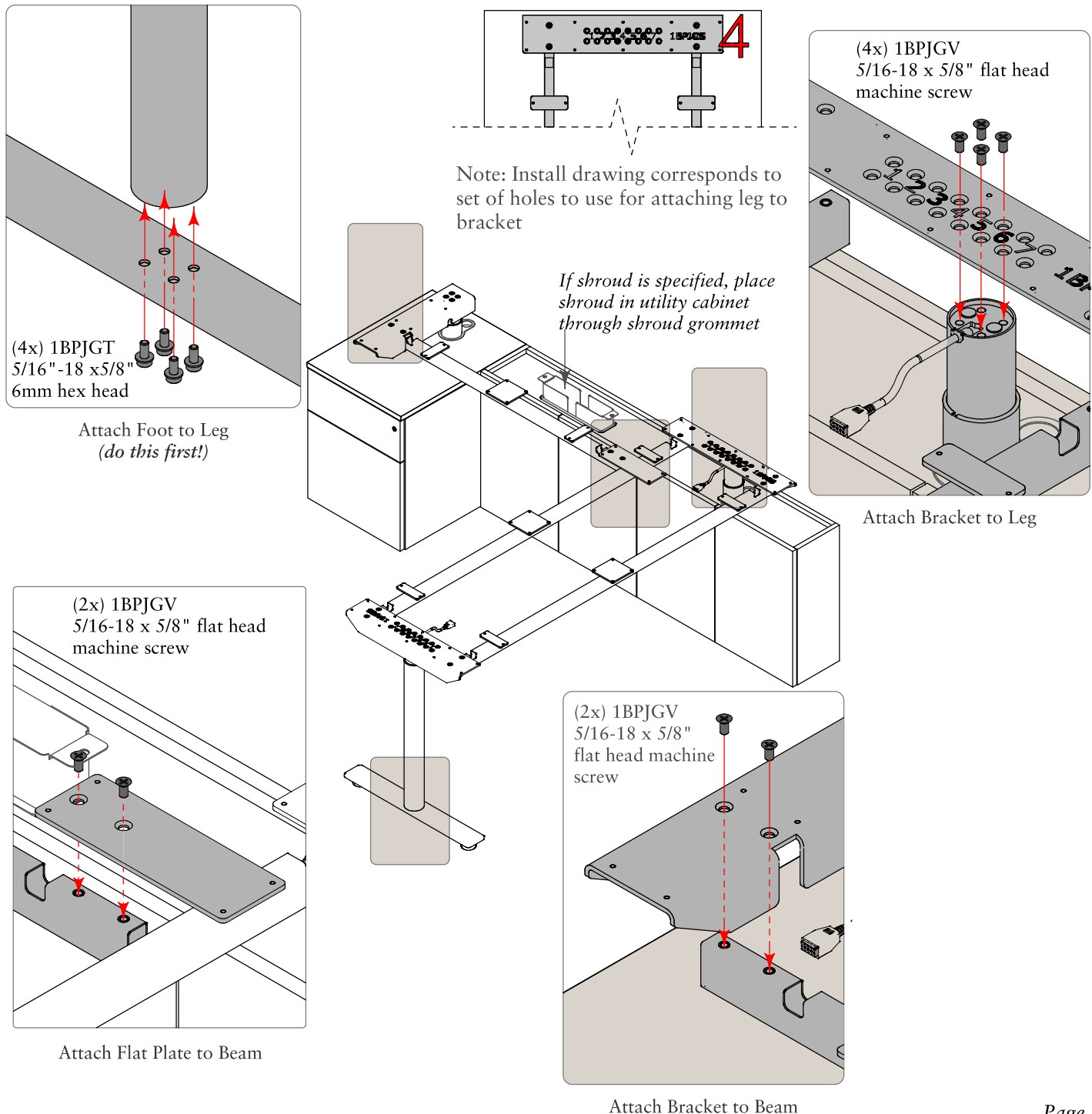


ROS-GRW Geiger One Direct To Wall Installation

1BS911

Note: Details apply, however the actual configuration of your product may vary from what is depicted here.

Attach Structure Components (Note: Loosely fasten brackets to tops of legs, then attach beams firmly before tightening brackets to legs).



ROS-GRW Geiger One Direct To Wall Installation

1BS911

Note: Details apply, however the actual configuration of your product may vary from what is depicted here.

Height Adjustable Electronic Set-Up

L-Desk

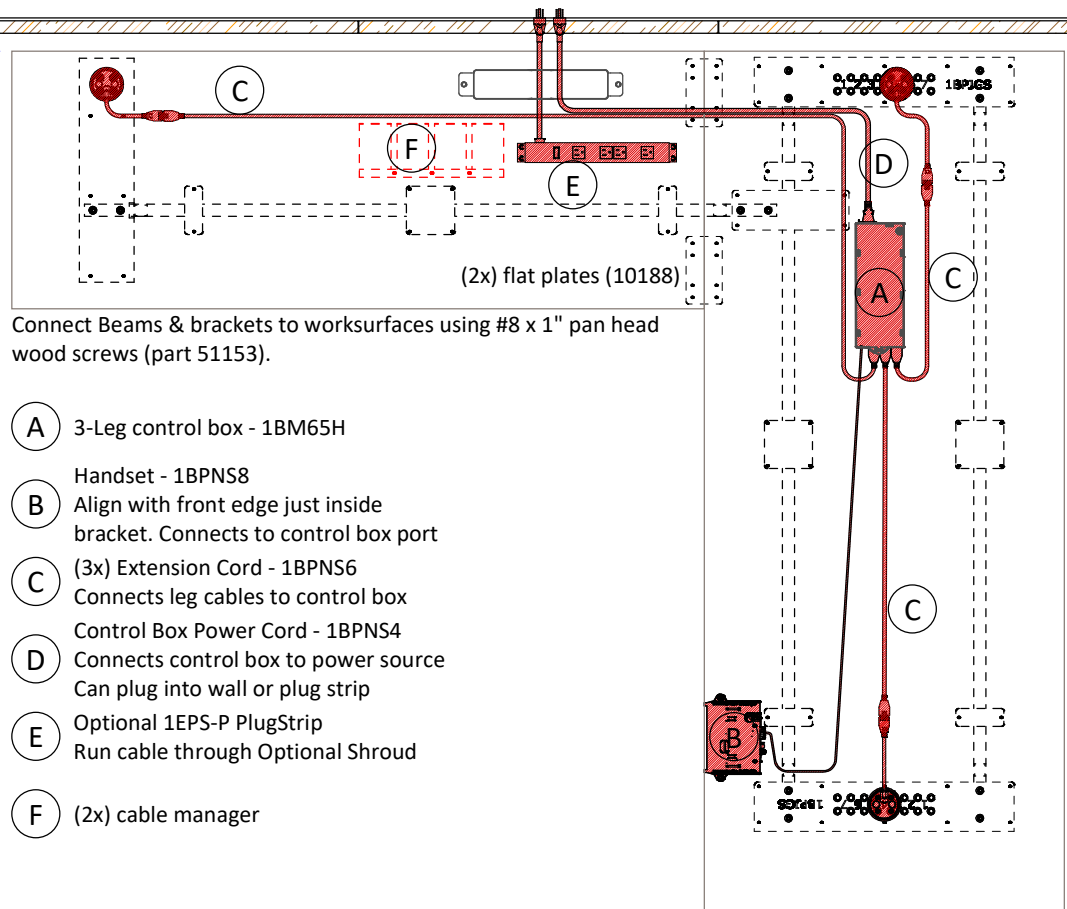


1-1/2" gap

To connect power to the height adjustable legs:

1. Attach an extension cord to each leg.
2. Connect the other end of the extension cord to the control box.
3. Connect the hand set to the control box.
4. Plug the power cord into the control box and then to an outlet.

You should hear a double click and see a flashing "0". If you see 4 dash lines then unplug the power cord and wait 10 seconds before plugging back in. Press and hold the down button and the desk will start to move up. Keep the down button pressed and wait until the display reads about 40" and you hear another double click. You can now use the up and down button to reach your desired height. Note that if you lose building power you will have to go through these steps again to reset your desk.



ROS-GRW Geiger One Direct To Wall Installation

1BS911

Note: Details apply, however the actual configuration of your product may vary from what is depicted here.

Height Adjustable Electronic Set-Up

Credenza Desk

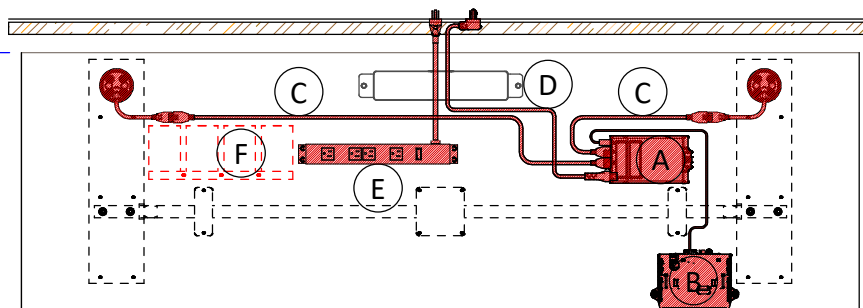


To connect power to the height adjustable legs:

1. Attach an extension cord to each leg.
2. Connect the other end of the extension cord to the control box.
3. Connect the hand set to the control box.
4. Plug the power cord into the control box and then to an outlet.

You should hear a double click and see a flashing "0". If you see 4 dash lines then unplug the power cord and wait 10 seconds before plugging back in. Press and hold the down button and the desk will start to move up. Keep the down button pressed and wait until the display reads about "40" and you hear another double click. You can now use the up and down button to reach your desired height. Note that if you lose building power you will have to go through these steps again to reset your desk.

1-1/2" gap



Connect Beams & brackets to worksurfaces using #8 x 1" pan head wood screws (part 51153).

- (A) 2-Leg control box - 1BM65G
- (B) Handset - 1BPNS8
- (B) Align with front edge just inside bracket. Connects to control box port
- (C) (2x) Extension Cord - 1BPNS6
- Connects leg cables to control box
- (D) Control Box Power Cord - 1BPNS5
- Connects control box to power source
- Can plug into wall or plug strip
- (E) Optional 1EPS-P PlugStrip
- Run cable through Optional Shroud
- (F) (2x) cable manager

ROS-GRW Geiger One Direct To Wall Installation

1BS911

Note: Details apply, however the actual configuration of your product may vary from what is depicted here.

Height Adjustable Electronic Set-Up

Runoff Desk



To connect power to the height adjustable legs:

1. Attach an extension cord to each leg.
2. Connect the other end of the extension cord to the control box.
3. Connect the hand set to the control box.
4. Plug the power cord into the control box and then to an outlet.

You should hear a double click and see a flashing "0". If you see 4 dash lines then unplug the power cord and wait 10 seconds before plugging back in. Press and hold the down button and the desk will start to move up. Keep the down button pressed and wait until the display reads about 40" and you hear another double click. You can now use the up and down button to reach your desired height. Note that if you lose building power you will have to go through these steps again to reset your desk.

Connect Beams & brackets to worksurfaces using #8 x 1" pan head wood screws (part 51153).

- (A) 2-Leg control box - 1BM65G
- (B) Handset - 1BPNS8
- (B) Align with front edge just inside bracket. Connects to control box port
- (C) (2x) Extension Cord - 1BPNS6
- Connects leg cables to control box
- (D) Control Box Power Cord - 1BPNS5
- Connects control box to power source
- Can plug into wall or plug strip
- (E) Optional 1EPS-P PlugStrip
- Run cable through Optional Shroud

