

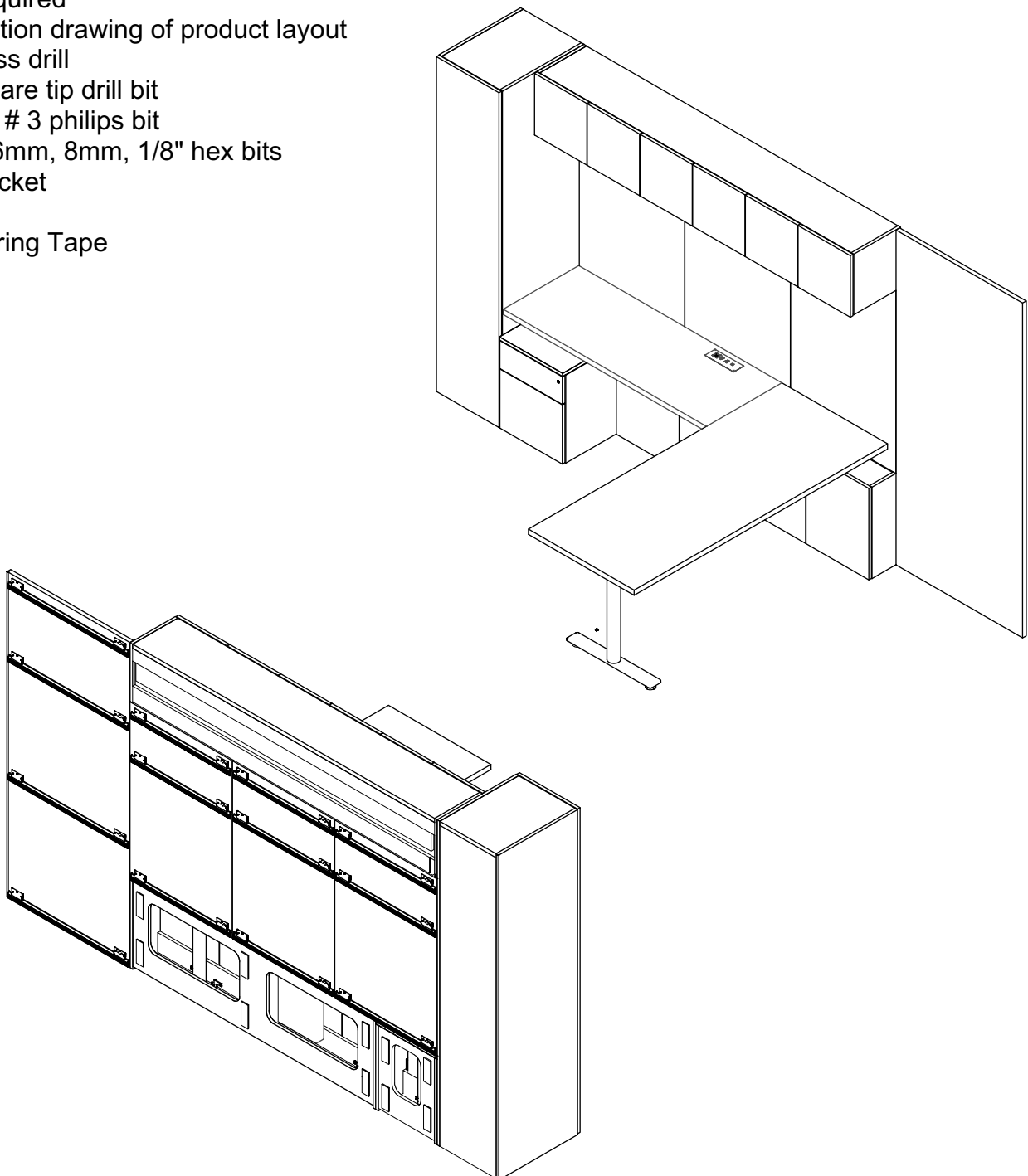
ROS-GRW Geiger One Direct To Wall Installation

1BRR0V

Note: Details apply, however the actual configuration of your product may vary from what is depicted here.

Tools Required

- o Installation drawing of product layout
- o Cordless drill
- o #2 Square tip drill bit
- o #2 and # 3 philips bit
- o 4mm, 6mm, 8mm, 1/8" hex bits
- o 1/2" socket
- o Level
- o Measuring Tape



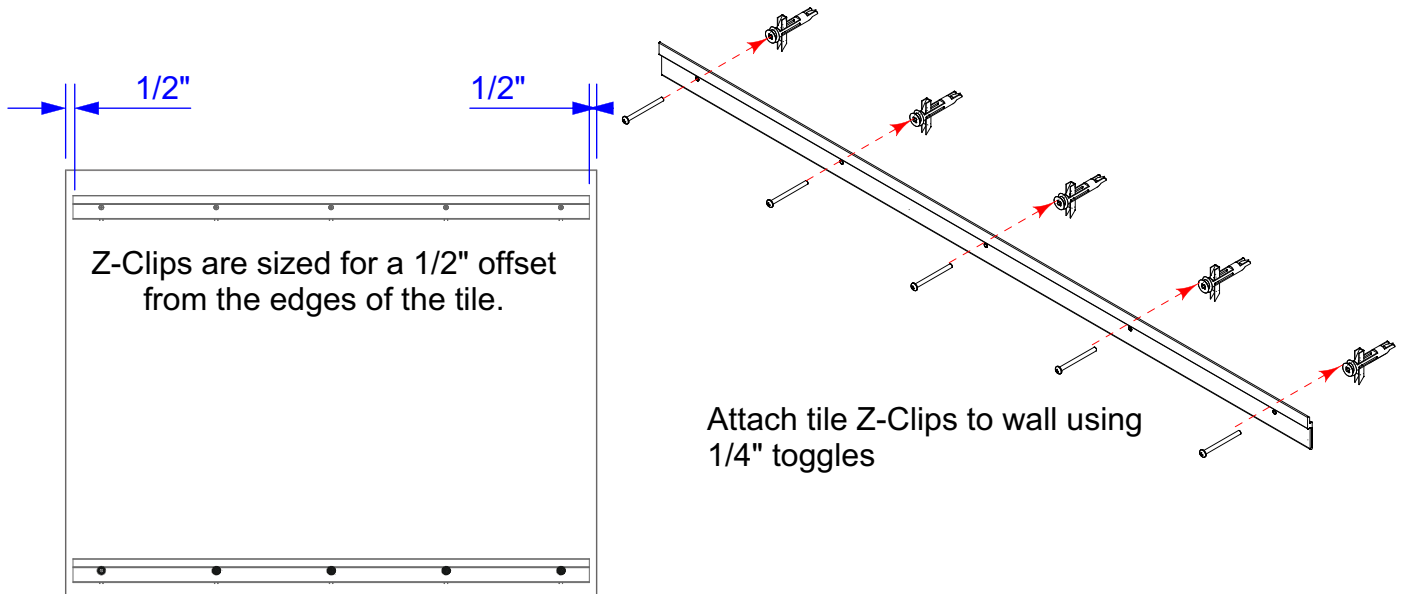
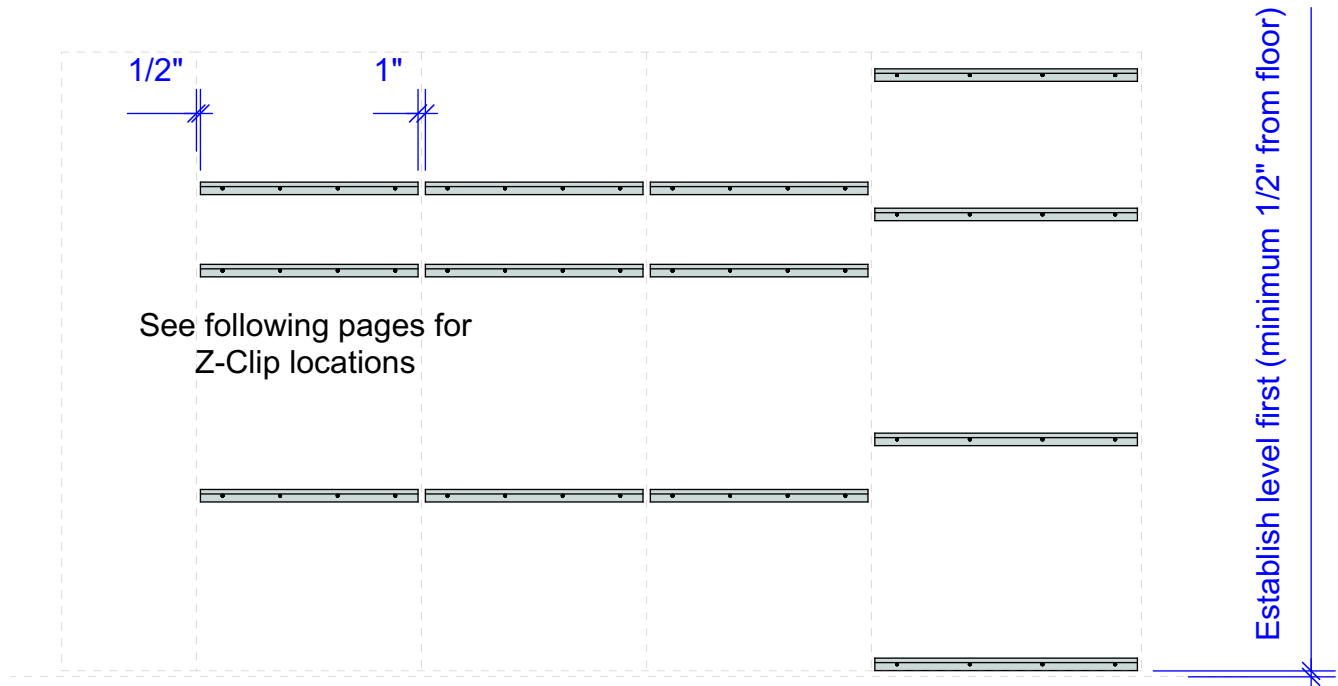
ROS-GRW Geiger One Direct To Wall Installation

1BRR0V

Note: Details apply, however the actual configuration of your product may vary from what is depicted here.

Mount Tile Z-Clips to Wall.

Tiles come with 3" clips pre-attached. Installing from the bottom up, lift tiles over and onto Z-Clips, firmly seating them.



ROS-GRW Geiger One Direct To Wall Installation

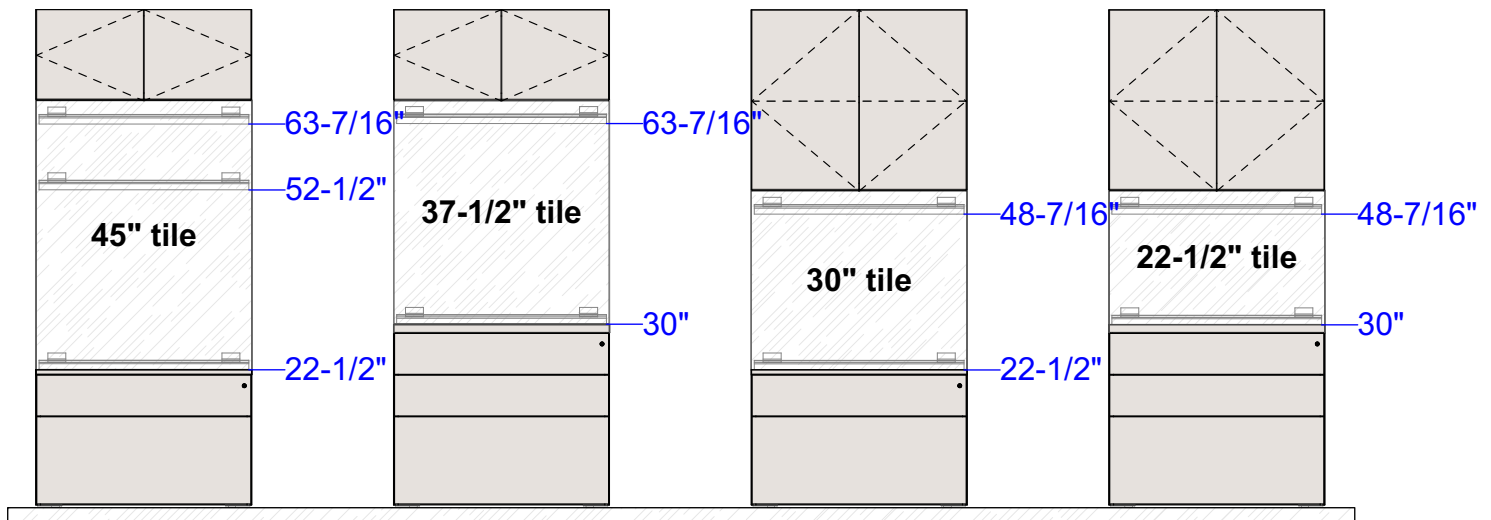
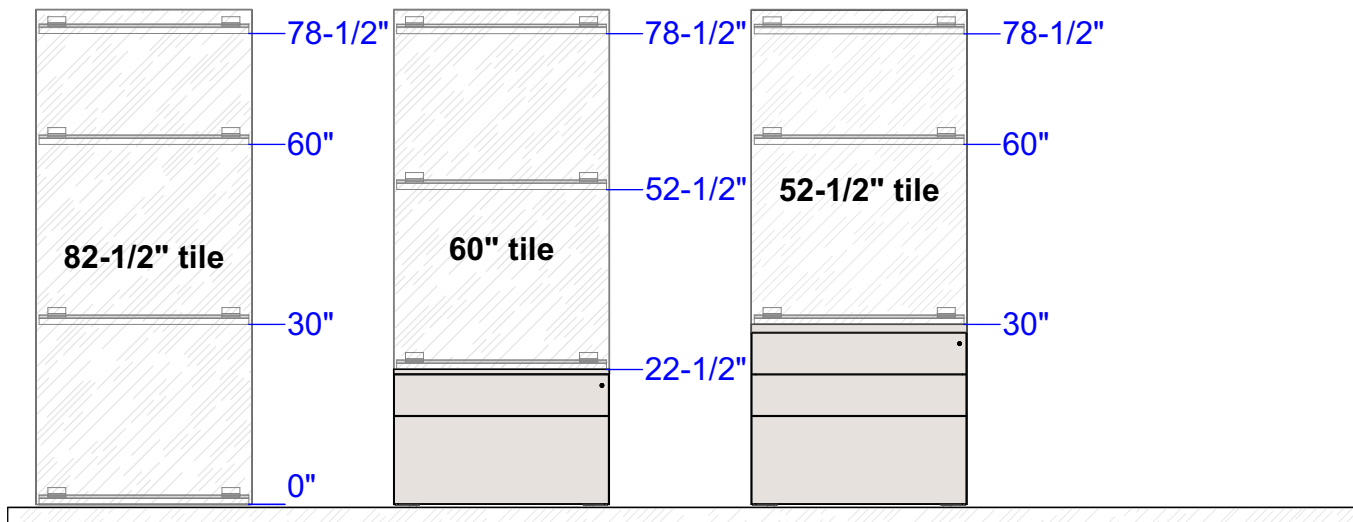
1BRR0V

Note: Details apply, however the actual configuration of your product may vary from what is depicted here.

Tile Z-Clip Locations

Dimensions listed do not include levelers or leveling . Measure up from where storage cases begin (minimum 1/2").

82-1/2" high overall height



ROS-GRW Geiger One Direct To Wall Installation

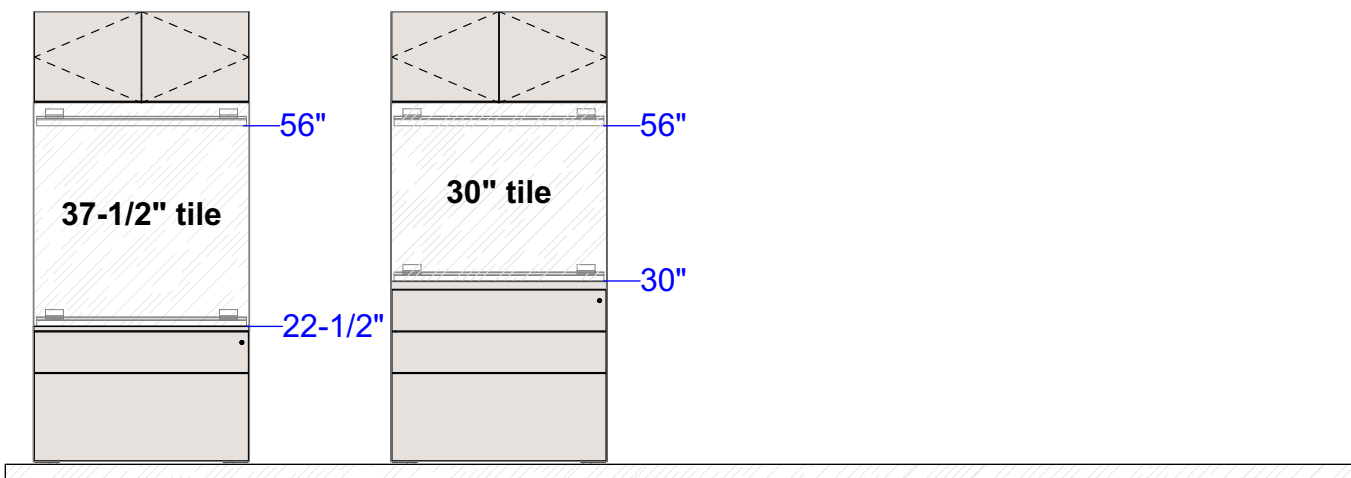
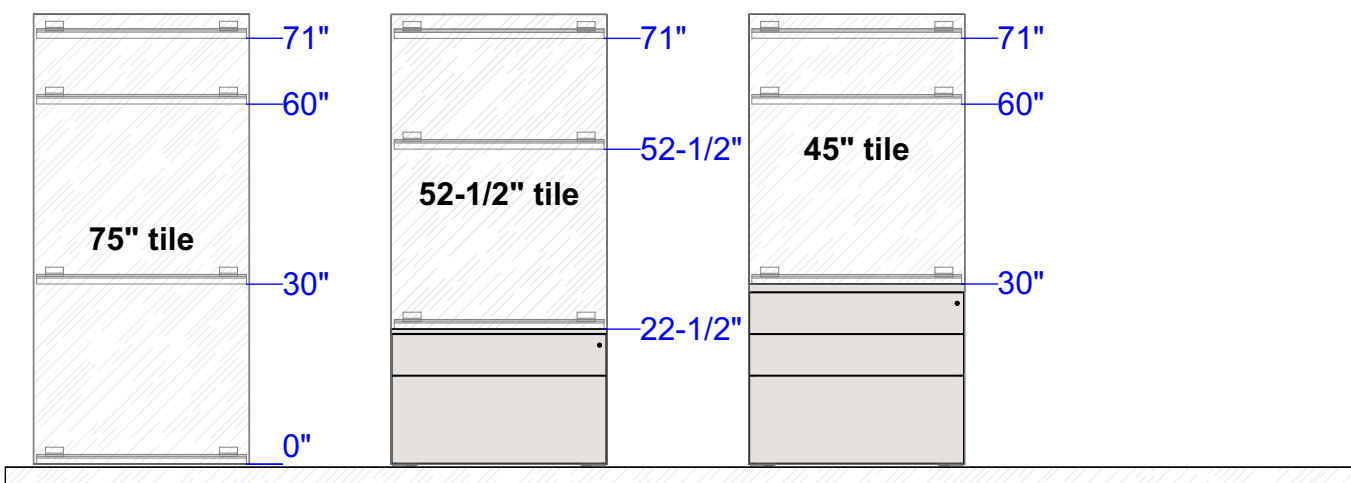
1BRR0V

Note: Details apply, however the actual configuration of your product may vary from what is depicted here.

Tile Z-Clip Locations

Dimensions listed do not include levelers or leveling . Measure up from where storage cases begin (minimum 1/2").

75" high overall height



ROS-GRW Geiger One Direct To Wall Installation

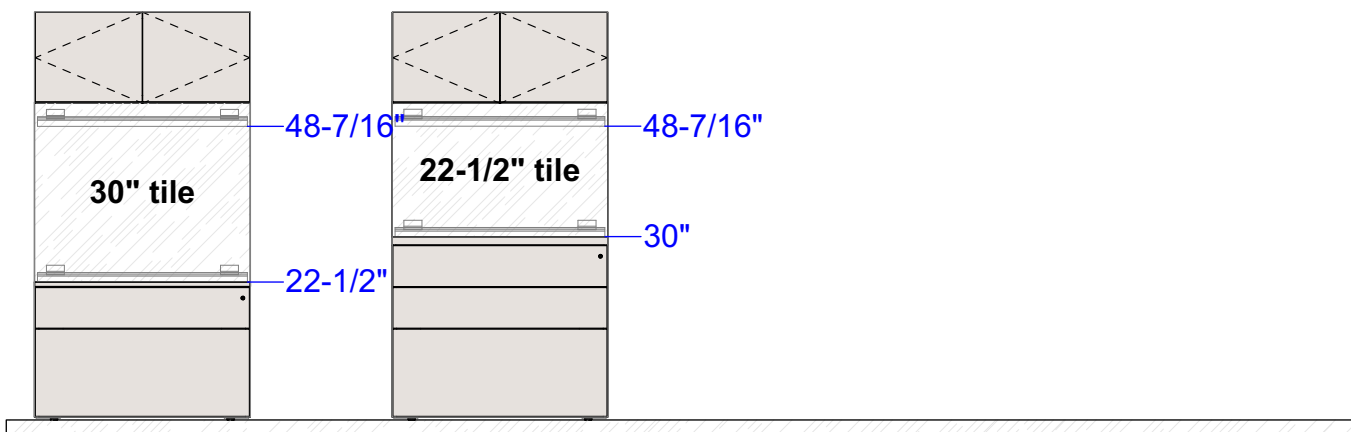
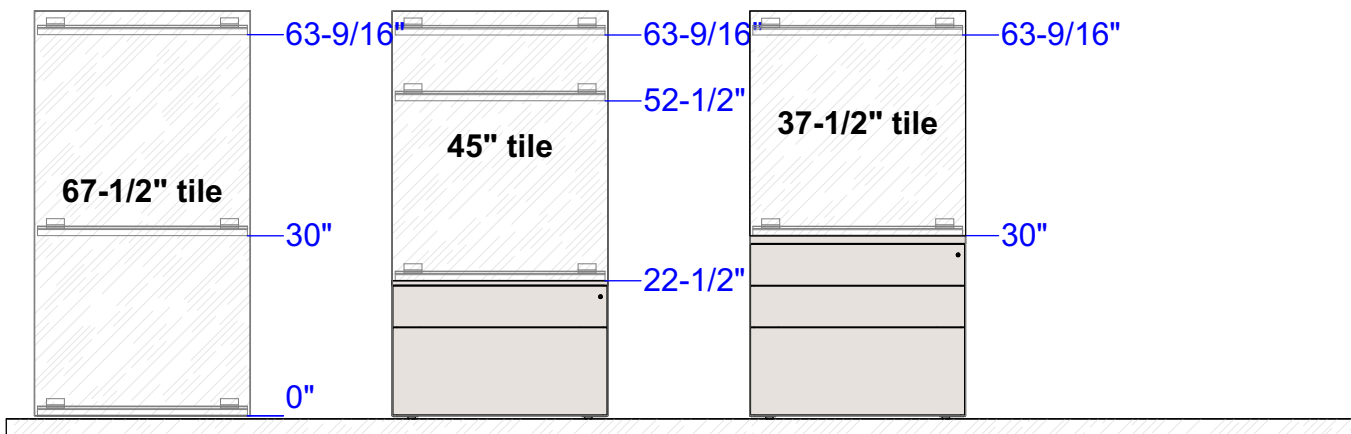
1BRR0V

Note: Details apply, however the actual configuration of your product may vary from what is depicted here.

Tile Z-Clip Locations

Dimensions listed do not include levelers or leveling . Measure up from where storage cases begin (minimum 1/2").

67-1/2" high overall height



ROS-GRW Geiger One Direct To Wall Installation

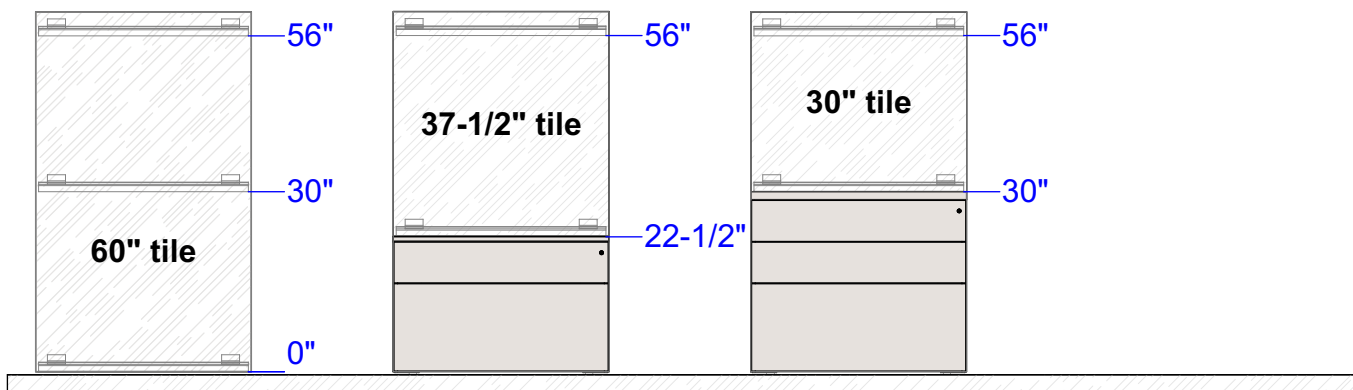
1BRR0V

Note: Details apply, however the actual configuration of your product may vary from what is depicted here.

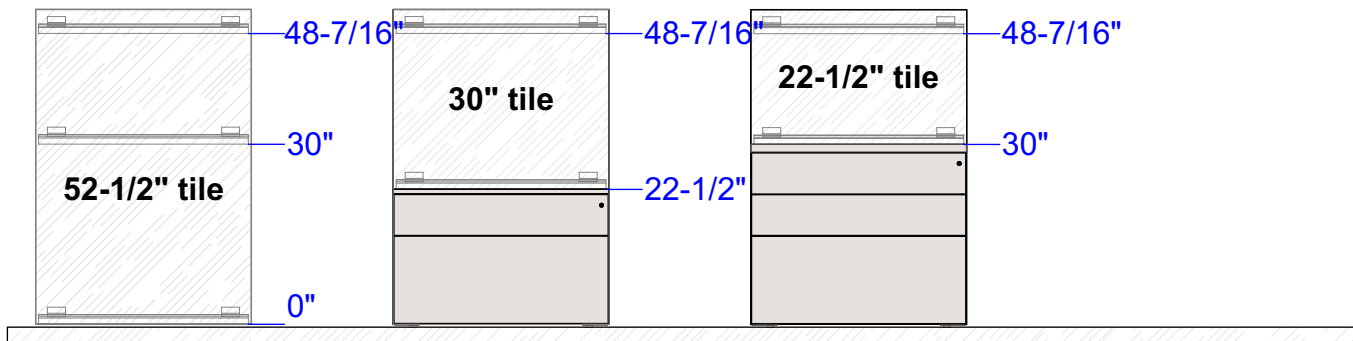
Tile Z-Clip Locations

Dimensions listed do not include levelers or leveling . Measure up from where storage cases begin (minimum 1/2").

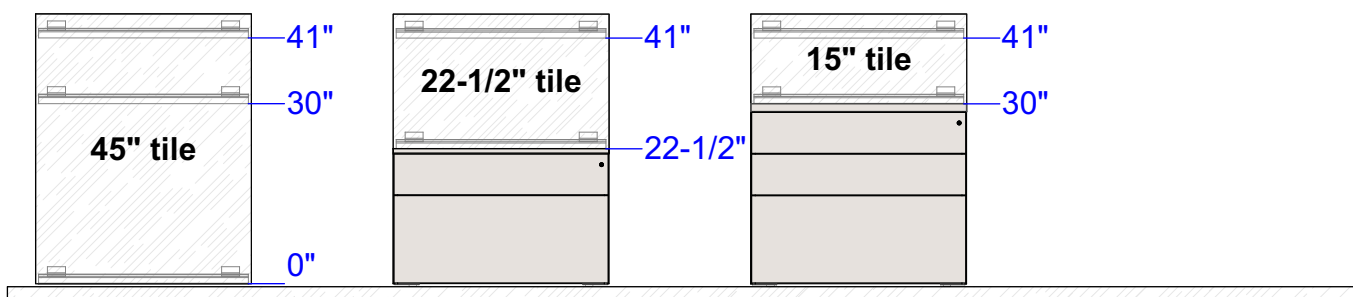
60" high overall height



52-1/2" high overall height



45" high overall height



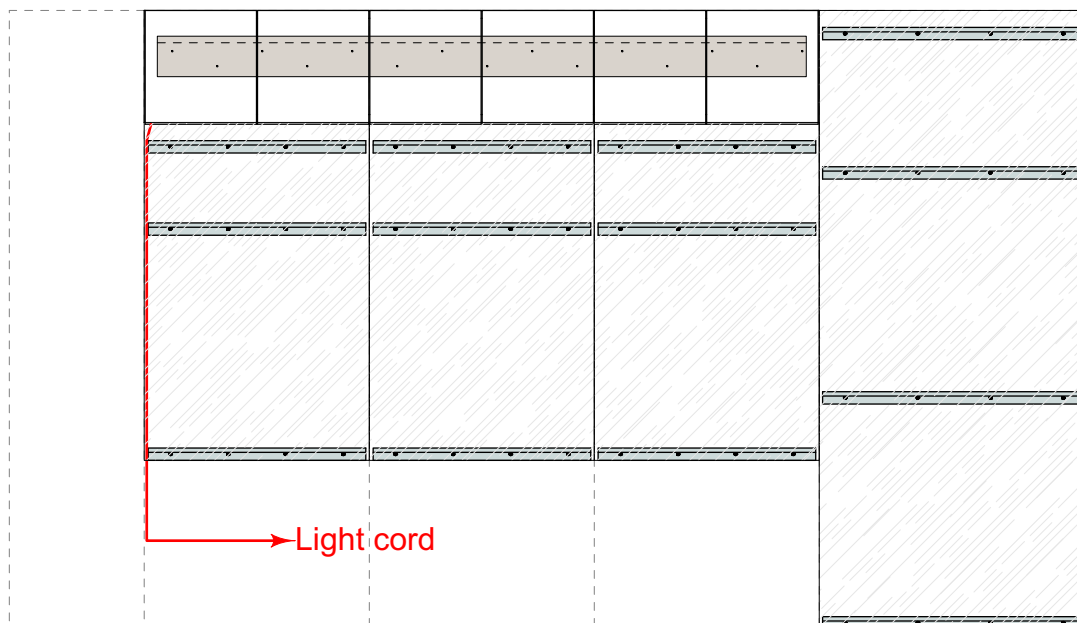
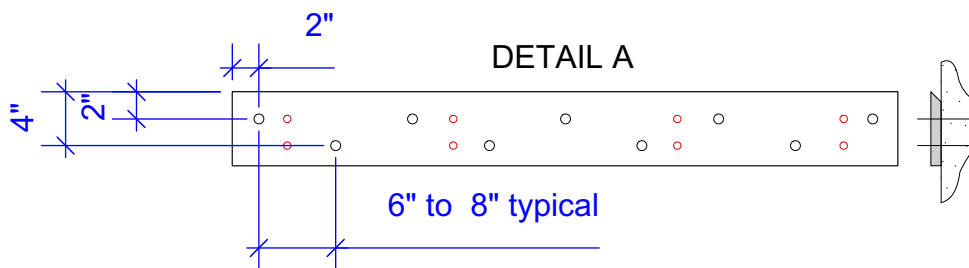
ROS-GRW Geiger One Direct To Wall Installation

1BRR0V

Note: Details apply, however the actual configuration of your product may vary from what is depicted here.

Install Wall Mount Overhead(s)

1. Locate Hanging Cleat
 - A. The wall mounting cleat ships attached to the back of the overhead. Measure from the top of the overhead to the bottom of the wall mount cleat and subtract this from where the top of the overhead will be installed and mark a level line. Using a #2 Robertson bit screwdriver, remove the cleat from the cabinet.
 - B. Drill the hanging cleat (wall attached portion) for 1/4" toggles. The first screws and/or toggles should be started 2" down and 2" over from the top corner of the cleat on both sides. Stagger the rest 6" apart per the detail A below. The top row should be 2" down from the top of the cleat and the bottom row should be 4" down from the top of the cleat. In addition, locate studs and secure with two screws per stud. It is the responsibility of the installer to use appropriate fastening hardware for the existing conditions.
 - C. Attach the cleat to the wall, aligning the bottom of the cleat with the marked line.
 - D. Lift overhead up and over wall cleat to install.
 - E. If the overhead has a light cord, fish the cord over to the end of the overhead and tape to wall alongside tile Z-clips

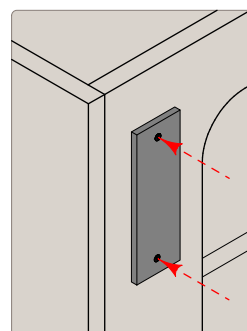
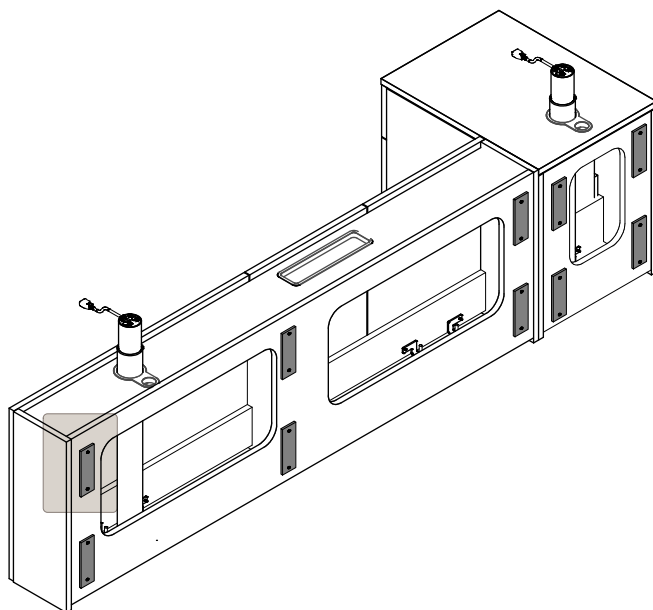


ROS-GRW Geiger One Direct To Wall Installation

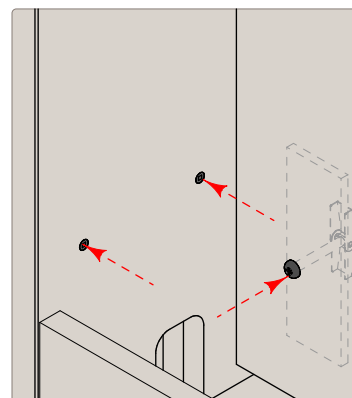
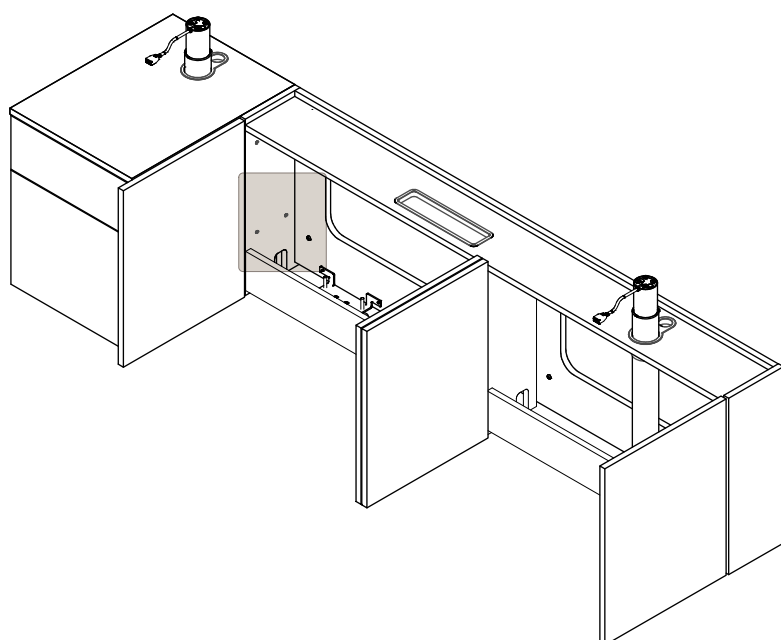
1BRR0V

Note: Details apply, however the actual configuration of your product may vary from what is depicted here.

Attach 2" x 6" x 1/4" Shims to Back of Utility Cabinet and Pedestals using #8 x 3/4" flat head wood screws (part 55044). Drive screw flush to back of shim.



Place utility cabinet and pedestal in their final positions, level and push snug to the wall. From the Interior of the utility cabinet and pedestals, drill for toggles through the shims. Install toggles in wall and then fasten cabinets to wall. Fasten together adjacent utility cabinet and pedestals Using #8 x 1-1/4" flat head wood screws (part 50163).

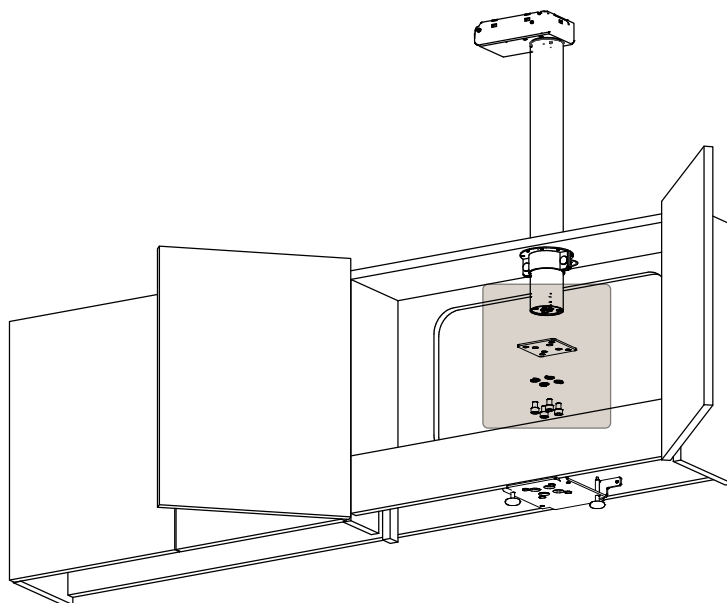


ROS-GRW Geiger One Direct To Wall Installation

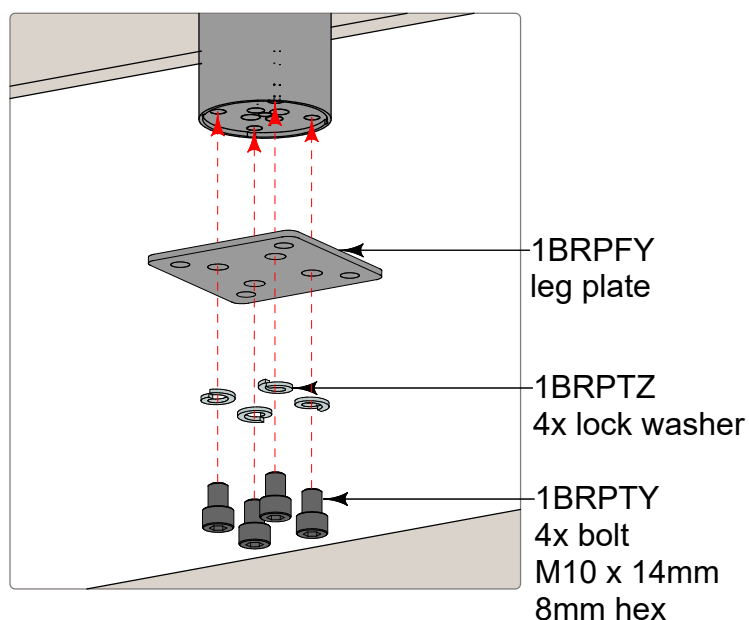
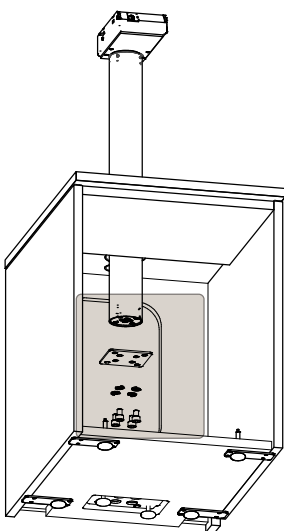
1BRR0V

Note: Details apply, however the actual configuration of your product may vary from what is depicted here.

Attach leg plate to underside of fixed height or adjustable height legs. Insert leg through grommet in utility cabinet or through grommet in pedestal top cap.



Note: Attach pedestal top prior to inserting leg through grommet

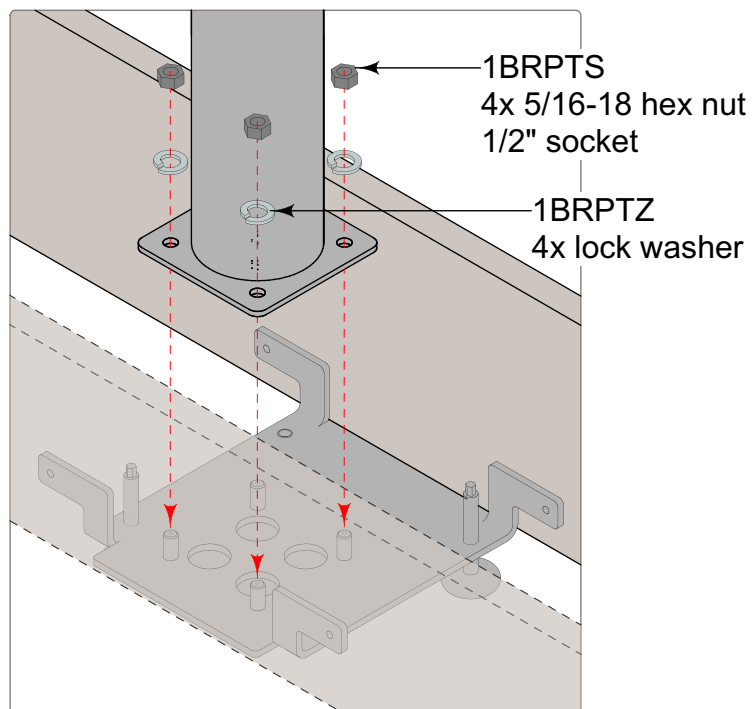
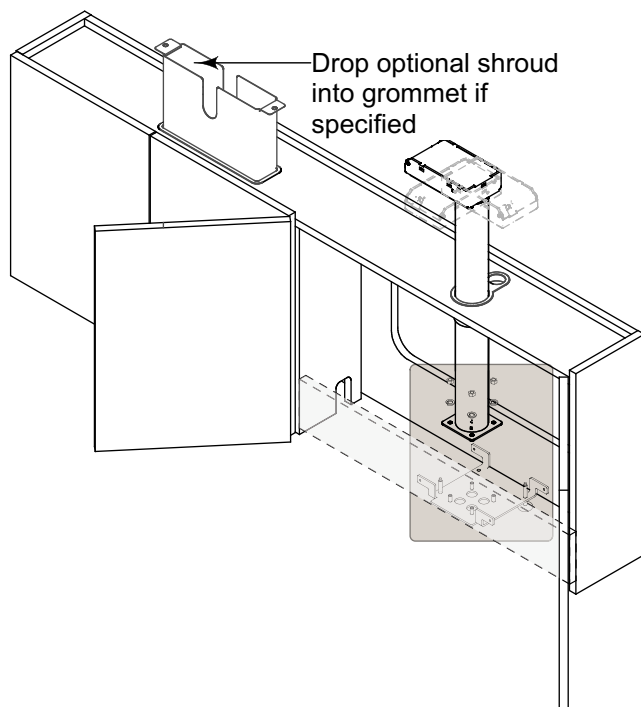


ROS-GRW Geiger One Direct To Wall Installation

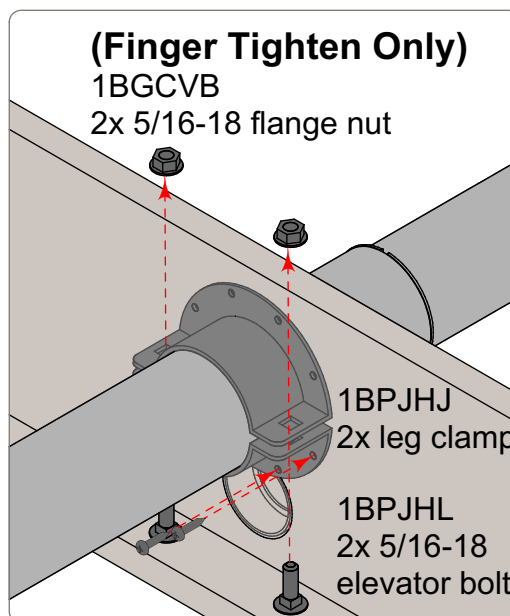
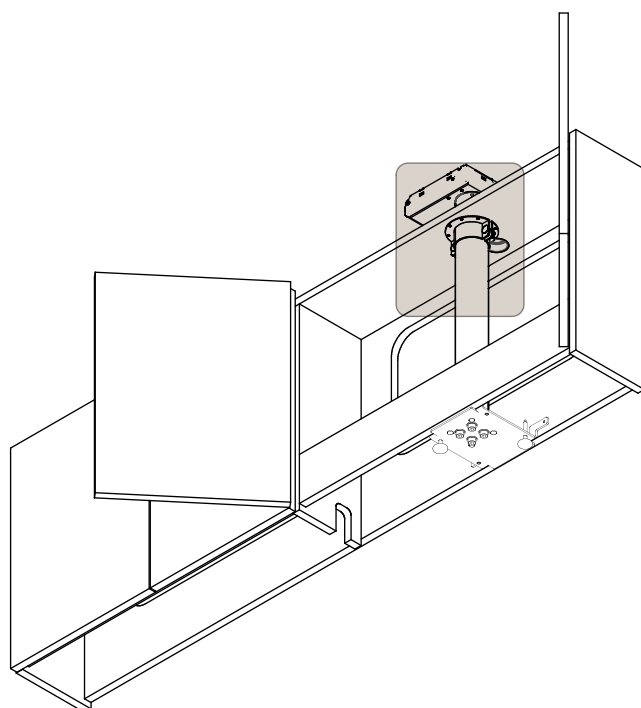
1BRR0V

Note: Details apply, however the actual configuration of your product may vary from what is depicted here.

Attach Fixed Height or Adjustable Height Legs to Utility Cabinet.
Make sure leg is oriented properly (see install drawings).



Make sure leg is leveled before tightening

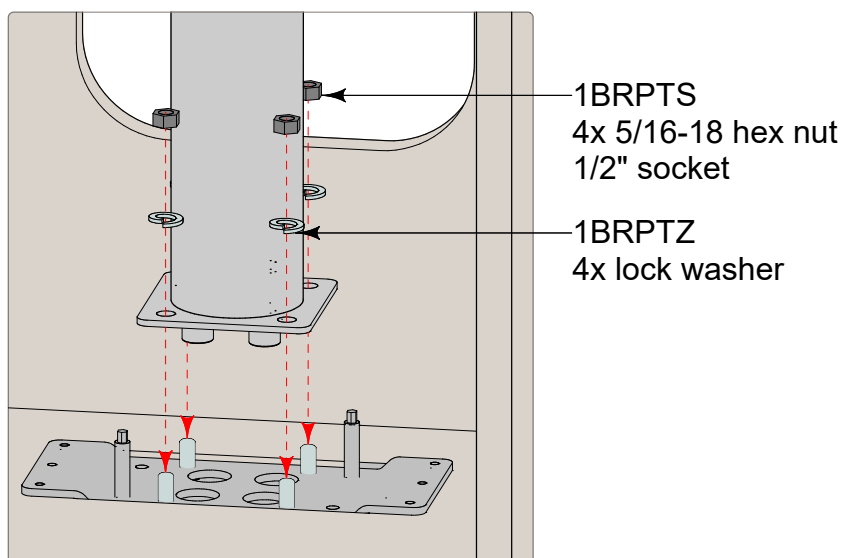
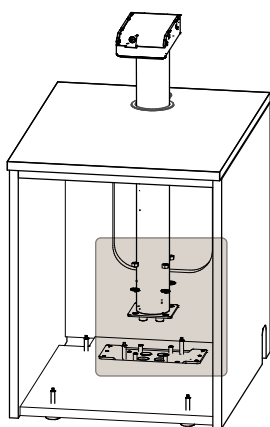


ROS-GRW Geiger One Direct To Wall Installation

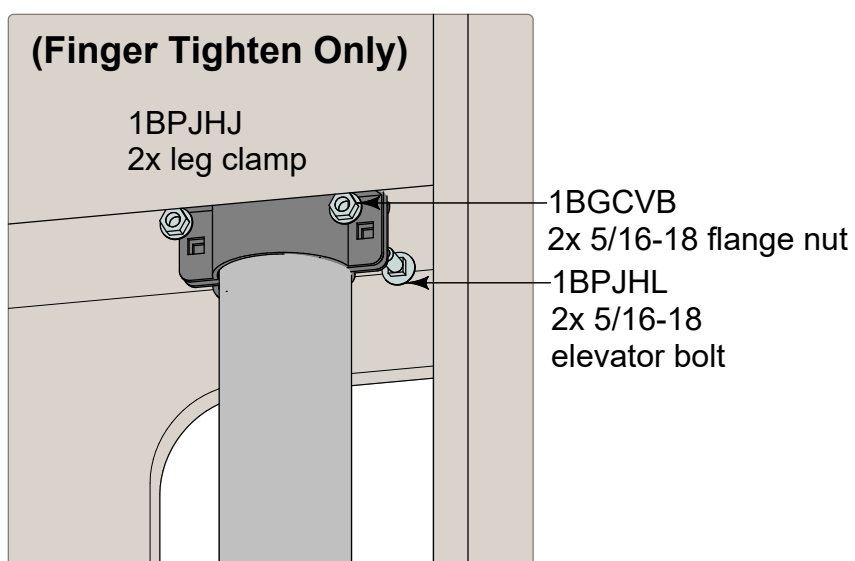
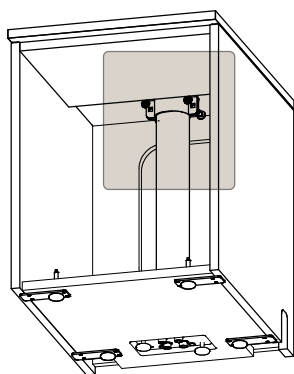
1BRR0V

Note: Details apply, however the actual configuration of your product may vary from what is depicted here.

Attach Fixed Height or Adjustable Height Leg in Low Storage



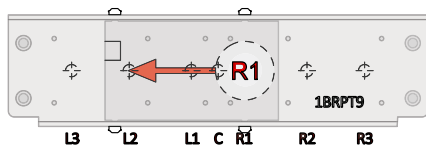
Make sure leg is leveled before tightening



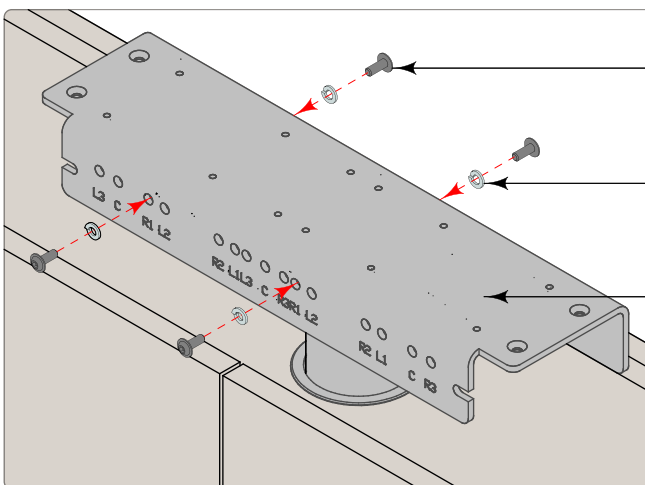
ROS-GRW Geiger One Direct To Wall Installation

1BRR0V

Note: Details apply, however the actual configuration of your product may vary from what is depicted here.



See install drawing for leg location and direction. Bracket has corresponding attachment locations (i.e. "R1").

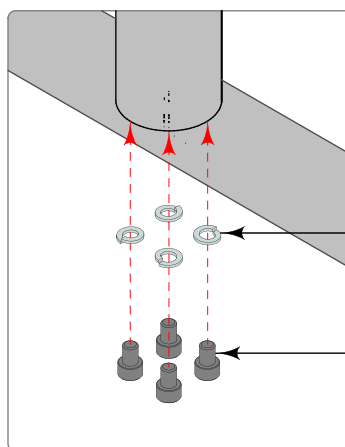
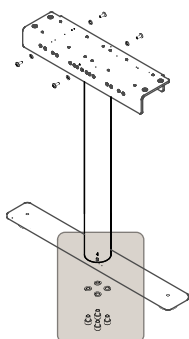
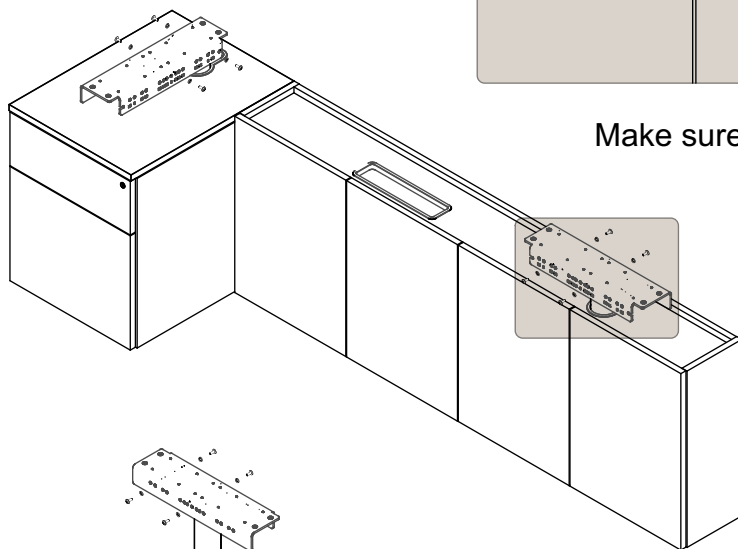


1BRPTX
4x M6 x 16mm
flanged button-head
4mm hex bit

1BRPTW
4x lock washer

1BRPT9
Leg Bracket

Make sure brackets are level



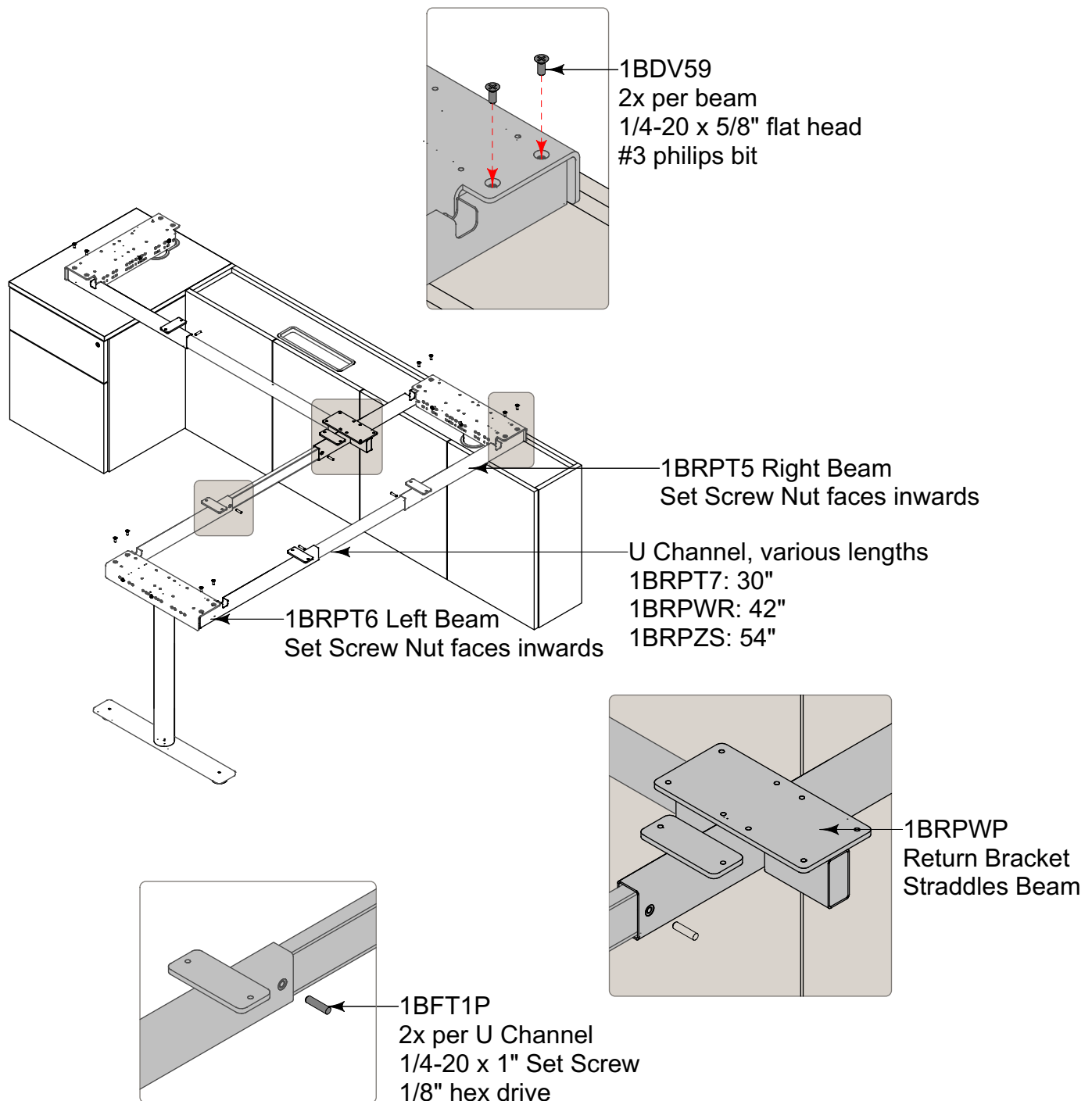
1BRPTZ
4x lock washer

1BRPTY
4x M10 x 14mm
Socket Head Screw
8mm hex bit

ROS-GRW Geiger One Direct To Wall Installation

1BRR0V

Note: Details apply, however the actual configuration of your product may vary from what is depicted here.

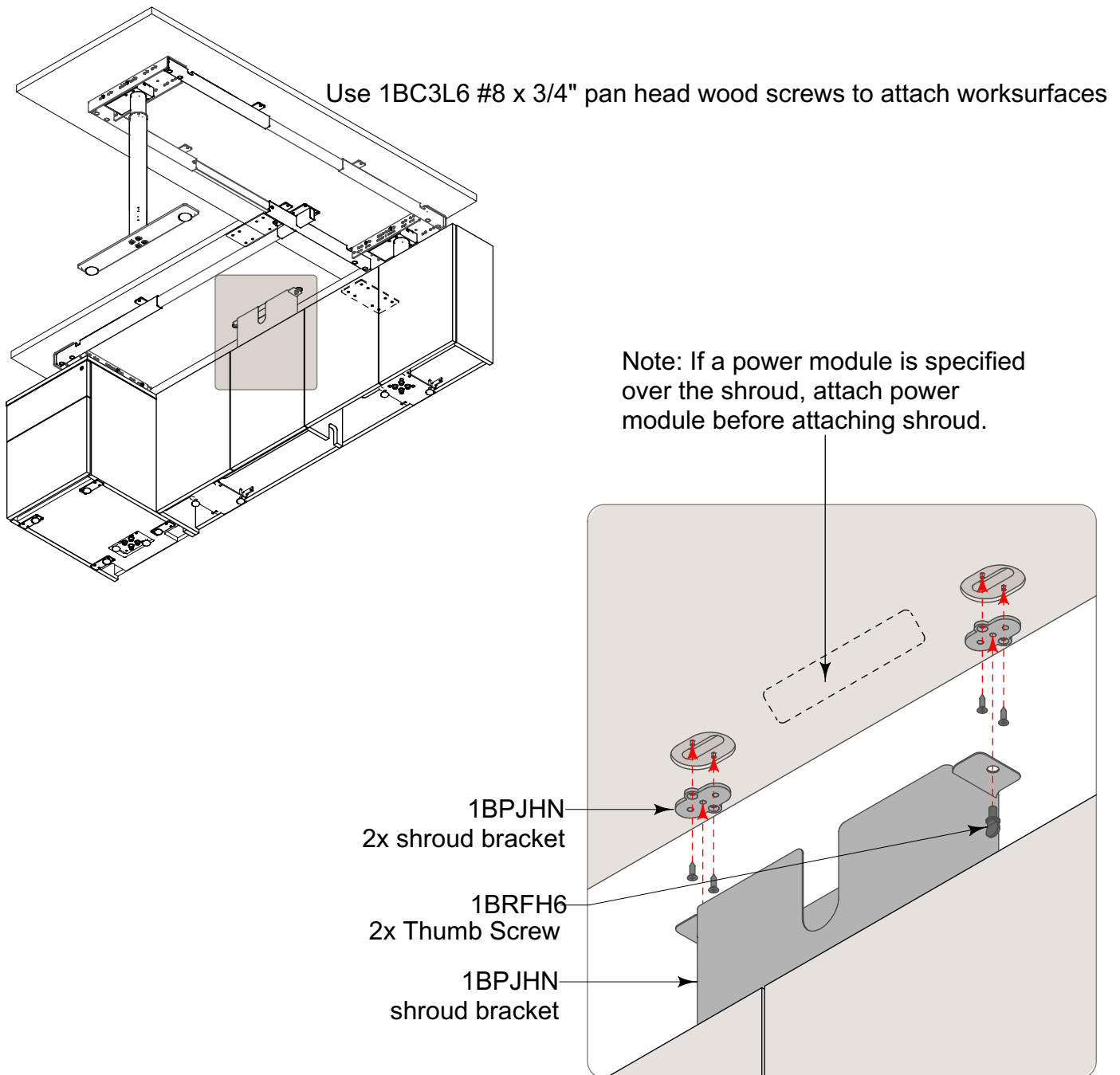


ROS-GRW Geiger One Direct To Wall Installation

1BRR0V

Note: Details apply, however the actual configuration of your product may vary from what is depicted here.

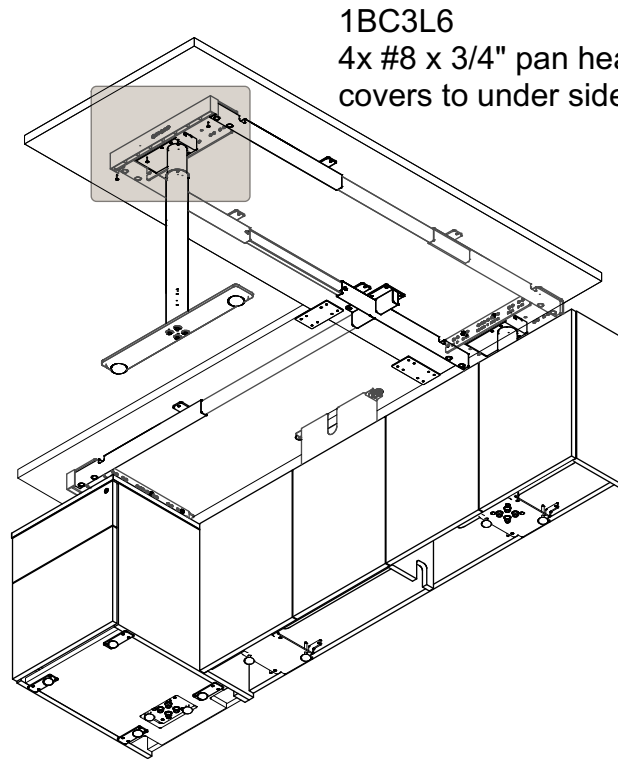
Attach Worksurfaces and Shroud



ROS-GRW Geiger One Direct To Wall Installation

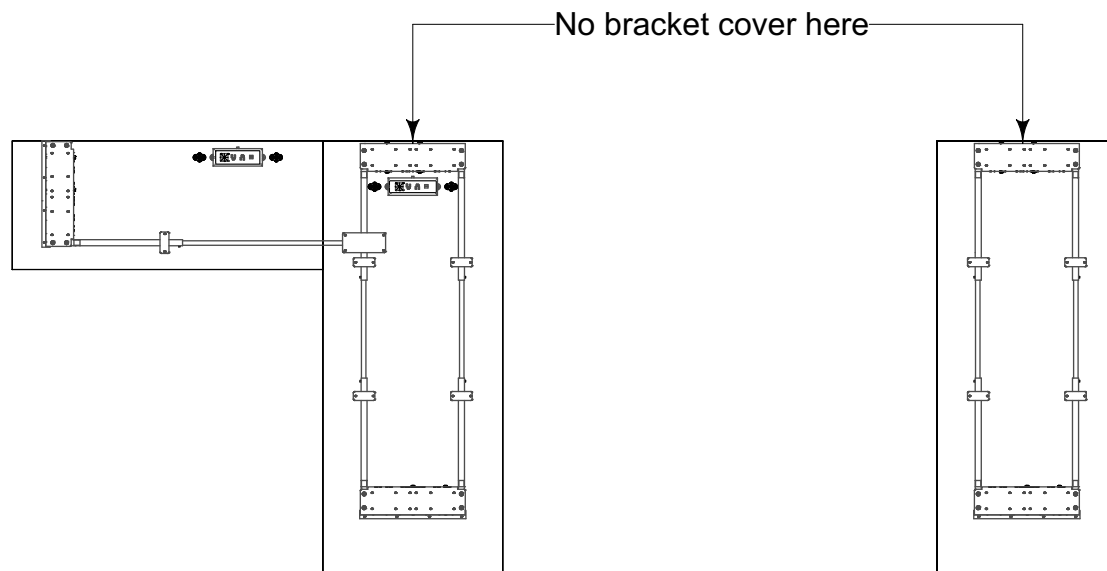
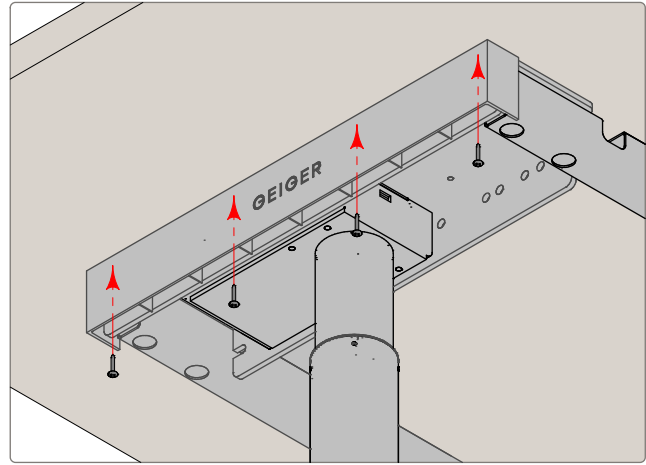
1BRR0V

Note: Details apply, however the actual configuration of your product may vary from what is depicted here.



1BC3L6

4x #8 x 3/4" pan head #2 square drive wood screws to attach bracket covers to under side of top



ROS-GRW Geiger One Direct To Wall Installation

1BRR0V

Note: Details apply, however the actual configuration of your product may vary from what is depicted here.

Height Adjustable Electronic Set-Up

L-Desk

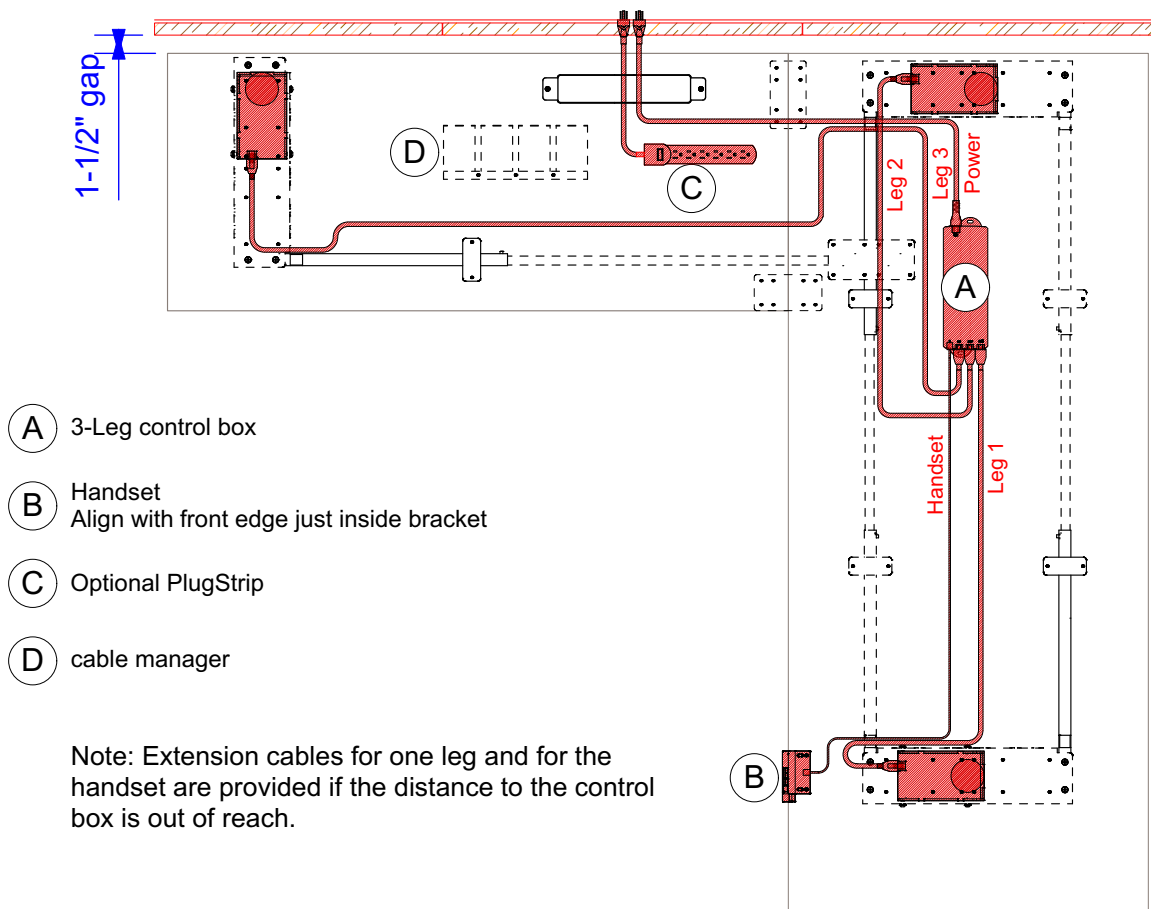


To connect power to the height adjustable legs:

- Attach legs to the control box.
- Connect the hand set to the control box.
- Plug the power cord into the control box and then to an outlet.

Simultaneously press the up and down button for 3 seconds. Continue pressing until all columns are in the lowest position. When finished with the reset, the control box will make a "beep" sound and the buttons can be released.

Install Height Adjustable Electrical Components to desk underside before setting.



ROS-GRW Geiger One Direct To Wall Installation

1BRR0V

Note: Details apply, however the actual configuration of your product may vary from what is depicted here.

Height Adjustable Electronic Set-Up

Credenza Desk

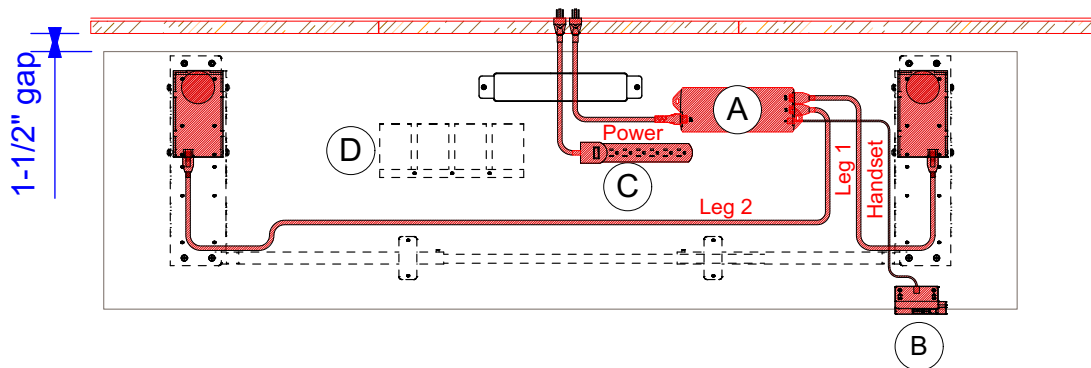


To connect power to the height adjustable legs:

- Attach legs to the control box.
- Connect the hand set to the control box.
- Plug the power cord into the control box and then to an outlet.

Simultaneously press the up and down button for 3 seconds. Continue pressing until all columns are in the lowest position. When finished with the reset, the control box will make a "beep" sound and the buttons can be released.

Install Height Adjustable Electrical Components to desk underside before setting.



- (A) 2-Leg control box
- (B) Handset
Align with bracket
- (C) Optional Plug strip
- (D) cable manager

Note: Extension cables for one leg and for the handset are provided if the distance to the control box is out of reach.

ROS-GRW Geiger One Direct To Wall Installation

1BRR0V

Note: Details apply, however the actual configuration of your product may vary from what is depicted here.

Height Adjustable Electronic Set-Up

Runoff Desk



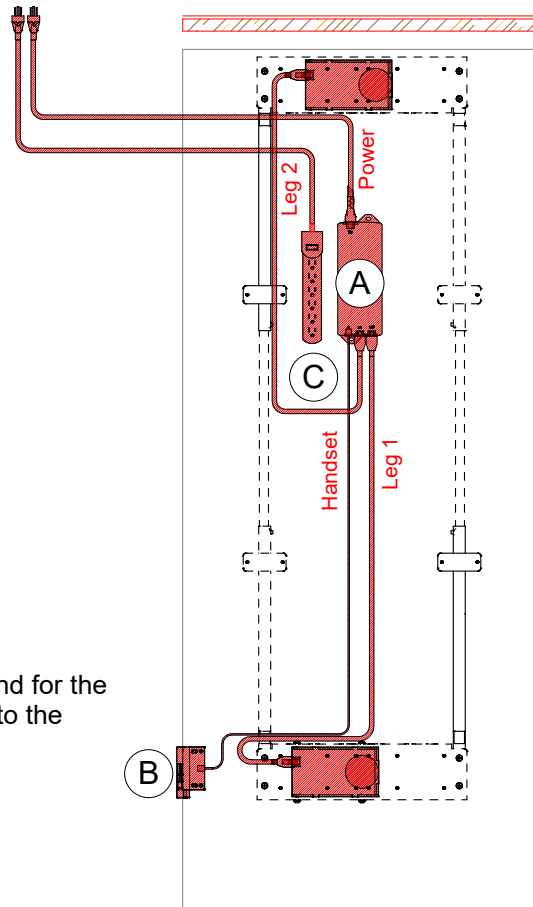
To connect power to the height adjustable legs:

- Attach legs to the control box.
- Connect the hand set to the control box.
- Plug the power cord into the control box and then to an outlet.

Simultaneously press the up and down button for 3 seconds. Continue pressing until all columns are in the lowest position. When finished with the reset, the control box will make a "beep" sound and the buttons can be released.

- (A) 2-Leg control box
- (B) Handset
- (C) Optional PlugStrip

Note: Extension cables for one leg and for the handset are provided if the distance to the control box is out of reach.



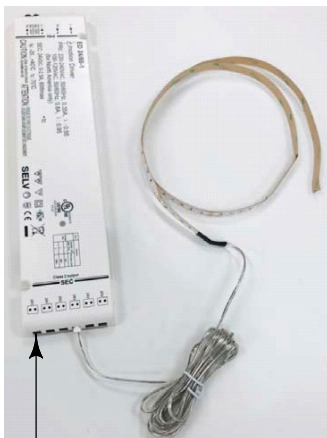
ROS-GRW Geiger One Direct To Wall Installation

1BRR0V

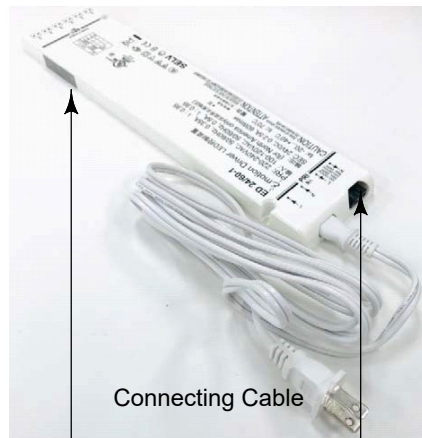
Note: Details apply, however the actual configuration of your product may vary from what is depicted here.

Connect Optional Task Light

- Connect the LED light cord that exits through shelf and wall panel and down wall to the power supply. Up to 6 light cords and a total of 16 feet of lighting can be powered by 1 power supply. The power supply includes a dimmer receiver module on the side of the power supply.
- If 2 or 3 power supplies are required, interconnect each power supply to the adjacent power supply with the provided 19" connecting cable.
- Plug the cord of the last power supply into a power outlet.
- Program the dimmer remote control to operate the power supply or supplies using the instructions below.
- Attach the remote control holder to furniture with provided double stick tape or screw.



Plug Light Cords Here



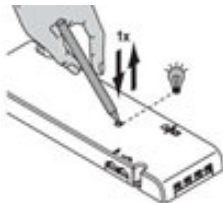
Connecting Cable

Dimmer Receiver Module

Plug Connecting Cable Here

Programming Remote Control

- Briefly press the button of the power supply. The indicator LED is lit blue.



- Keep the 1-channel remote control within reach. Remove any protective foil.



- Remove and reinsert remote battery. Press the ON/OFF button on the remote for at least 5 seconds. If the programming is successful, the LED on the power supply will go out.

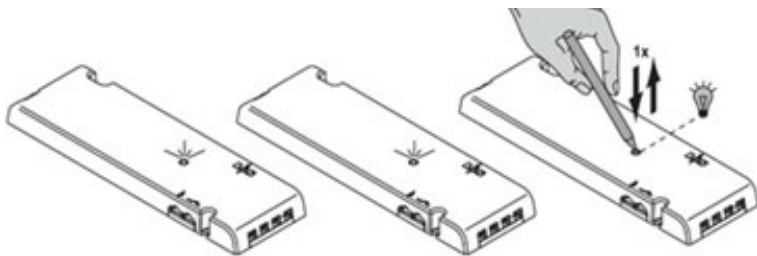
ROS-GRW Geiger One Direct To Wall Installation

1BRR0V

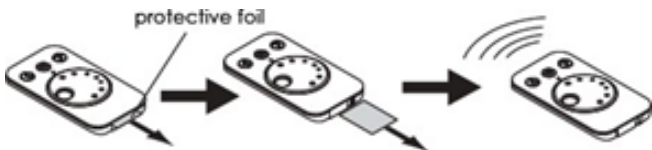
Note: Details apply, however the actual configuration of your product may vary from what is depicted here.

Programming Remote Control (continued)

- D. To program multiple power supplies to work with a single remote, briefly press the button of all power supplies that you want to program. The indicator LEDs will be lit blue.

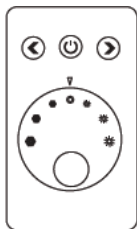


- E. Keep the 1-channel remote control within reach. Remove any protective foil.



- F. Remove and reinsert the remote battery. Press the ON/OFF button for at least 5 seconds. If the programming is successful, the LEDs on the power supplies will go out.

8.Operating Remote Control



Button	Function
ON/OFF	Switching lighting group 1 ON/OFF
Left arrow	Reducing the brightness
Right arrow	Increasing the brightness
Color wheel	Setting the color temperature

- A. Switching the lights ON/OFF
Press button ON/OFF to switch on all lighting.
Press the button once more to switch off the lighting.
- B. Setting the brightness
The brightness can be set gradually or continuously.
- Gradual Setting (100 % - 75 % - 50 % - 25 % - 0 %)
Press the left arrow button to reduce the brightness gradually. Press the right arrow button to increase the brightness gradually.
- Continuous Setting
Keep the left arrow button pressed to reduce the brightness continuously. Keep the right arrow button pressed to increase the brightness continuously
OR
Rotate the wheel to adjust brightness up or down.