

GEIGER

TEXTILES

Healthier Hospitals

SAFER CHEMICALS CHALLENGE

Healthier Hospitals makes it easier for hospitals to select furniture and materials that meet the Healthy Interiors goal of the Safer Chemicals Challenge. The goal requires participating hospitals to ensure that 30 percent of the annual volume of furnishings and furniture purchases (based on cost) eliminate the use of formaldehyde, perfluorinated compounds, polyvinyl chloride (PVC), antimicrobials, and all flame-retardants.

The Geiger Textiles patterns included in this document meet the goals set forth by the Healthier Hospitals Safer Chemicals Challenge*, Version 2. They avoid the use of formaldehyde, per- and polyfluorinated compounds (PFCs), polyvinyl chloride (PVC), antimicrobials, and all flame-retardant chemicals.



A PRACTICE GREENHEALTH PROGRAM

**The textiles described meet the Healthy Interiors goal of the Safer Chemicals Challenge according to the manufacturer. Practice Greenhealth does not verify this information.*

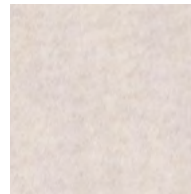
GEIGER

TEXTILES

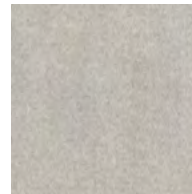
Allusion

DESIGNED BY BASSAMFELLOWS

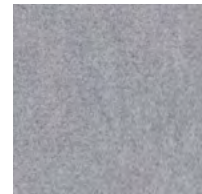
APPLICATION	Seating
CONTENT	60% Alpaca, 27% Wool, 13% Nylon
BACKING	Cotton
WIDTH	56"
REPEAT	None
ABRASION	95,000 Cycles, Martindale
FLAMMABILITY	CA TB 117-2013
WEIGHT	25.2 Oz Per Linear Yard
ORIGIN	Italy
ENVIRONMENTAL	SCS Indoor Advantage™ Gold Contains Bio-Based Materials
MAINTENANCE	S – Clean with Mild, Dry Cleaning Solvent
CUSTOM FINISHES	Alta™ Plush
PRICE GROUP	8
NET PRICE	\$135 Per Yard



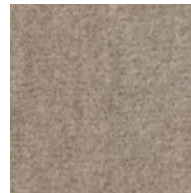
1GS01 Moonlight



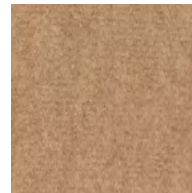
1GS02 Pearl Gray



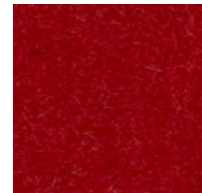
1GS03 Platinum



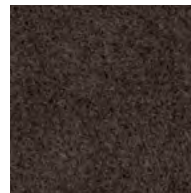
1GS04 Smoky Taupe



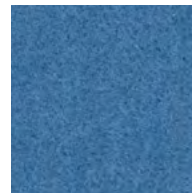
1GS05 Camel



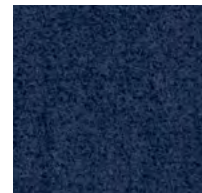
1GS06 Swiss Red



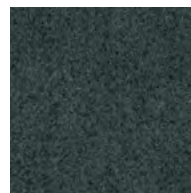
1GS07 Chestnut
Brown



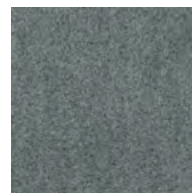
1GS08 Deep
Cerulean



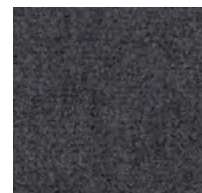
1GS09 Navy



1GS10 Black Green



1GS11 Sterling



1GS12 Anthracite

GEIGER

TEXTILES

Alpaca Mohair

DESIGNED BY SUSAN LYONS

APPLICATION	Seating
CONTENT	100% Alpaca
BACKING	Cotton/Polyester
WIDTH	54"
REPEAT	None
ABRASION	40,000 Cycles, Martindale
FLAMMABILITY	CA TB 117-2013
WEIGHT	29.7 Oz Per Linear Yard
ORIGIN	Belgium
ENVIRONMENTAL	SCS Indoor Advantage™ Gold Contains Bio-Based Materials
MAINTENANCE	S – Clean with Mild, Dry Cleaning Solvent
CUSTOM FINISHES	Alta™ Plush; PFOA-Free Stain Resistant Finish
PRICE GROUP	9
NET PRICE	\$154 Per Yard



18510 Dune



18511 Trench



18512 Vicuna



18570 Sepia



18571 Umber



18580 Fog



18581 Flannel



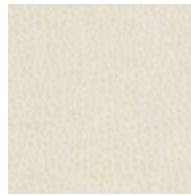
18582 Charcoal

GEIGER

TEXTILES

Antico

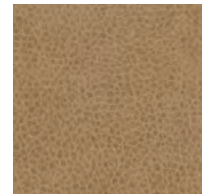
APPLICATION	Seating
CONTENT	100% Polyurethane
FINISH	Ink and Stain Resistant
BACKING	Polyester/Cotton
WIDTH	54"
REPEAT	None
ABRASION	100,000 Double Rubs, Wyzenbeek
FLAMMABILITY	CA TB 117-2013
WEIGHT	19.5 Oz Per Linear Yard
ORIGIN	China
ENVIRONMENTAL	SCS Indoor Advantage™ Gold FR Chemical Free Heavy Metal Free Prop 65 Chemical Free Healthier Hospitals Compliant Living Future Red List Compliant WELL Building Standard Compliant
MAINTENANCE	W – Clean with Water-Based Cleanser; Bleach Cleanable – Clean with 10:1 Water to Household Bleach
PRICE GROUP	4
NET PRICE	\$42 Per Yard



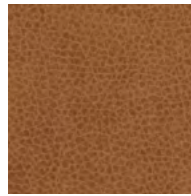
1GM01 Cream



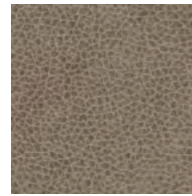
1GM02 Bone



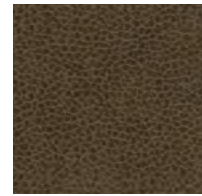
1GM03
Raw Sienna



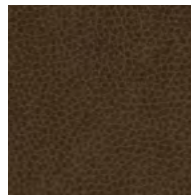
1GM04 Desert



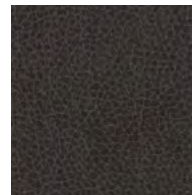
1GM05 Ash Gray



1GM06 Hunter



1GM07 Earthen



1GM08 Dark Shale

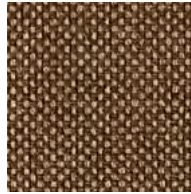
GEIGER

TEXTILES

Basketweave

DESIGNED BY SUSAN LYONS

APPLICATION	Seating
CONTENT	60% Cotton, 40% Wool
WIDTH	53"
REPEAT	None
ABRASION	35,000 Cycles, Martindale
FLAMMABILITY	CA TB 117-2013
WEIGHT	31.8 Oz Per Linear Yard
ORIGIN	Austria
ENVIRONMENTAL	SCS Indoor Advantage™ Gold Contains Bio-Based Materials
MAINTENANCE	S – Clean with Mild, Dry Cleaning Solvent
CUSTOM FINISHES	Acrylic Backing/PFOA-Free Stain Resistant Finish; Alta; Alta Food & Beverage; Nanotex; Nanotex with Impermeable Barrier; PFOA-Free Stain Resistant Finish
PRICE GROUP	8
NET PRICE	\$100 Per Yard



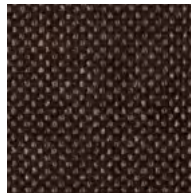
18710 Dune



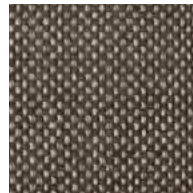
18711 Saddle



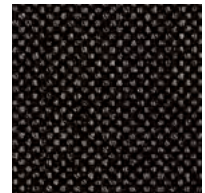
18712 Camel
Flannel



18770 Umber



18780 Stone



18781 Charcoal

GEIGER

TEXTILES

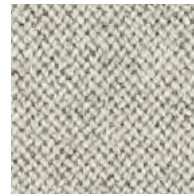
Bellano

DESIGNED BY BASSAMFELLOWS

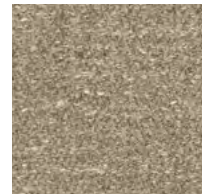
APPLICATION	Seating, Geiger Tackboards
CONTENT	75% Wool, 10% Linen, 8% Nylon, 7% Alpaca
WIDTH	55"
ABRASION	40,000 Cycles, Martindale
FLAMMABILITY	CA TB 117-2013
WEIGHT	21.44 Oz Per Linear Yard
ORIGIN	Italy
ENVIRONMENTAL	SCS Indoor Advantage™ Gold Contains Bio-Based Materials
MAINTENANCE	S – Clean with Mild, Dry Cleaning Solvent
CUSTOM FINISHES	Acrylic Backing/PFOA-Free Stain Resistant Finish; Alta; Alta Food & Beverage; Nanotex; Nanotex with Impermeable Barrier; PFOA-Free Stain Resistant Finish
PRICE GROUP	7
NET PRICE	\$80 Per Yard



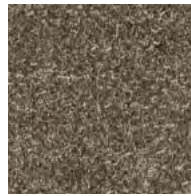
1AX01 Pearl



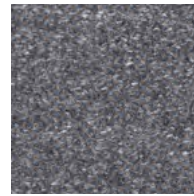
1AX02 Fog



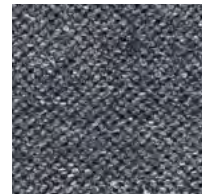
1AX03 Fawn



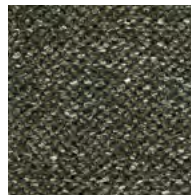
1AX04 Pumice



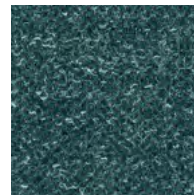
1AX05 Pewter



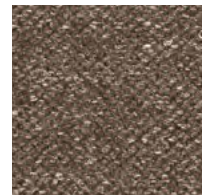
1AX06 Atlantic



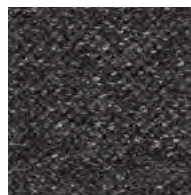
1AX07 Black Green



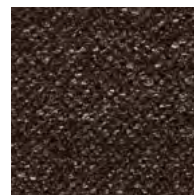
1AX08 Adriatic



1AX09 Coffee



1AX10 Charcoal



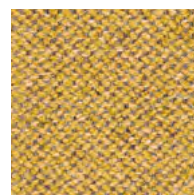
1AX11 Umber



1AX12 Magenta



1AX13 Bittersweet



1AX14 Sunflower

GEIGER

TEXTILES

Bristol Leather

APPLICATION	Seating
CONTENT	European Full Grain Semi-Aniline Dyed Cowhide
TANNING	Chrome-Free, Synthetic Vegetable
FINISH	Breathable Water-Based Protective Topcoat
AVERAGE HIDE	50-55 Square Feet
FLAMMABILITY	CA TB 117-2013
WEIGHT	2.75 Oz Per Square Foot
THICKNESS	1.1 mm +/- .1 mm
ORIGIN	Austria
ENVIRONMENTAL	SCS Indoor Advantage™ Gold FR Chemical Free Heavy Metal Free Prop 65 Chemical Free Oeko-Tex Certified Healthier Hospitals Compliant Living Future Red List Compliant WELL Building Standard Compliant
PRICE GROUP	10
NET PRICE	\$10 Per Square Foot



5-507 Black



5-511 Putty



5-512 Grebe



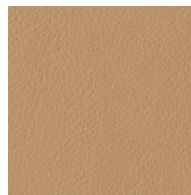
5-519 Hunter



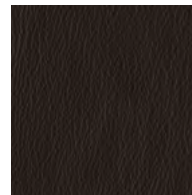
5-520 White



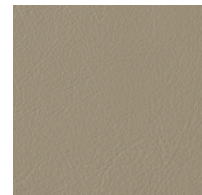
5-521 Ivory



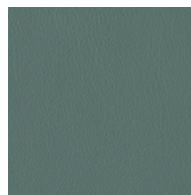
5-522 Parchment



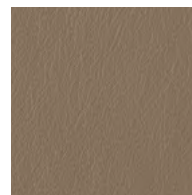
5-524 Espresso



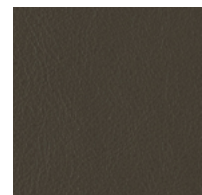
5-534 Pearl



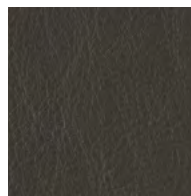
5-537 Caribbean



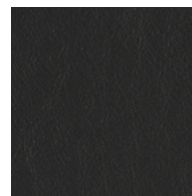
5-546 Pumice



5-547 Smoke



5-548 Charcoal



5-549 Dark Shale

Bristol Leather



5-556 Downtown Grey



5-557 City Night



5-558 Neutral



5-559 Ash Gray



5-563 Champagne



5-564 Chestnut Brown



5-565 Dark Sienna



5-566 Earthen



5-567 Desert



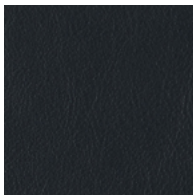
5-568 British Green



5-569 Wrought Iron



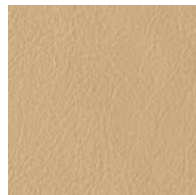
5-579 Paris Blue



5-583 Atlantic



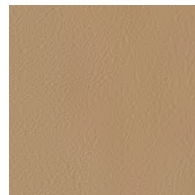
5-589 Umber



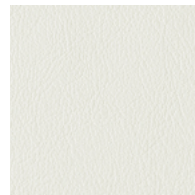
5-591 Bone



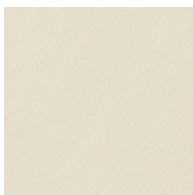
5-592 Camel



5-594 Taupe



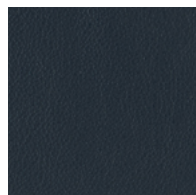
5-597 Pure



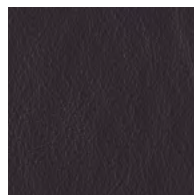
5-598 Cream



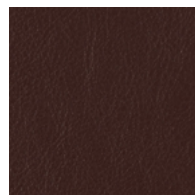
5-599 Poppy



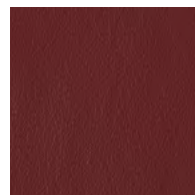
5-600 Midnight Blue



5-601 Deep Aubergine



5-602 Merlot



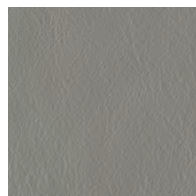
5-603 Sangria



5-604 Swiss Red



5-605 Nordic Yellow



5-606 Sky Gray

GEIGER

TEXTILES

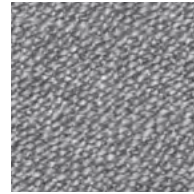
Cheswick

DESIGNED BY BASSAMFELLOWS

APPLICATION	Seating, Geiger Tackboards
CONTENT	55% Acrylic, 45% Polyester
WIDTH	55"
ABRASION	100,000 Double Rubs, Wyzenbeek
FLAMMABILITY	CA TB 117-2013
WEIGHT	23 Oz Per Linear Yard
ORIGIN	Germany
ENVIRONMENTAL	SCS Indoor Advantage™ Gold FR Chemical Free Prop 65 Chemical Free OEKO-TEX® Certified Yarns Healthier Hospitals Compliant Living Future Red List Compliant WELL Building Standard Compliant
MAINTENANCE	W/S – Clean with Water-Based Cleanser, or Mild, Dry Cleaning Solvent; Bleach Cleanable – Clean with 10:1 Water to Household Bleach
CUSTOM FINISHES	Alta; Alta Food & Beverage; Alta Workplace; Nanotex; Nanotex; Nanotex with Impermeable Barrier; PFOA-Free Stain Resistant Finish
PRICE GROUP	5
NET PRICE	\$58 Per Yard
NOTE	Bleach Cleanable



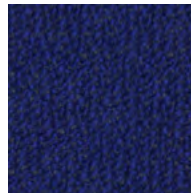
1DD01 Blanc



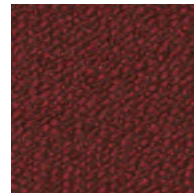
1DD02 Sterling



1DD03 Charcoal



1DD04 Royal



1DD05 Garnet



GEIGER

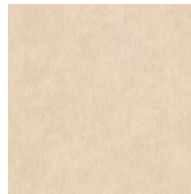
TEXTILES

Classic Velvet

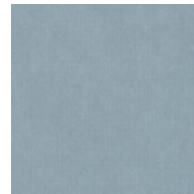
DESIGNED BY BASSAMFELLOWS

APPLICATION	Seating
CONTENT	100% Polyester
BACKING	Polyester/Cotton
WIDTH	55"
REPEAT	None
ABRASION	70,000 Cycles, Martindale
FLAMMABILITY	CA TB 117-2013
WEIGHT	24.9 Oz Per Linear Yard
ORIGIN	Italy
ENVIRONMENTAL	SCS Indoor Advantage™ Gold
MAINTENANCE	W/S – Clean with Water-Based Cleanser, or Mild, Dry Cleaning Solvent
CUSTOM FINISHES	Alta™ Plush; PFOA-Free Stain Resistant
PRICE GROUP	6
NET PRICE	\$76 Per Yard

NOTE To ensure longevity of velvet textiles, a 100% cotton liner is recommended to prevent wear to the backside of the textile. Areas exposed to greatest wear should be padded with foam beneath this liner.



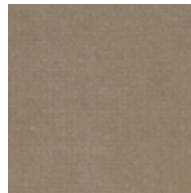
16501 Opal



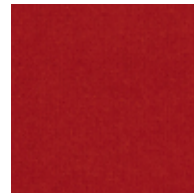
16502 Ice Blue



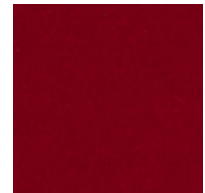
16503 Platinum



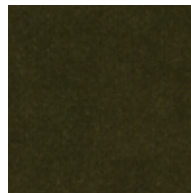
16504 Smoky Taupe



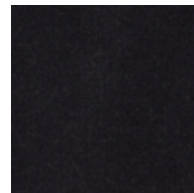
16505 Blaze



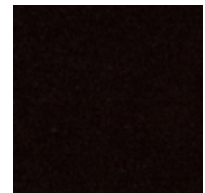
16506 Majestic Red



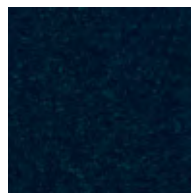
16507 Peridot



16508 Obsidian



16509 Truffle



16510 Sapphire

GEIGER

TEXTILES

Corded Stripe

DESIGNED BY BASSAMFELLOWS

APPLICATION	Seating
CONTENT	100% Cotton
BACKING	Polyester/Cotton
WIDTH	54"
REPEAT	2 ¾" H
ABRASION	90,000 Double Rubs, Wyzenbeek
FLAMMABILITY	CA TB 117-2013
WEIGHT	33.3 Oz Per Linear Yard
ORIGIN	United States
ENVIRONMENTAL	SCS Indoor Advantage™ Gold Contains Bio-Based Materials
MAINTENANCE	S – Clean with Mild, Dry Cleaning Solvent
CUSTOM FINISHES	Acrylic Backing/PFOA-Free Stain Resistant Finish; Alta; Nanotex; PFOA-Free Stain Resistant Finish
PRICE GROUP	9
NET PRICE	\$124 Per Yard



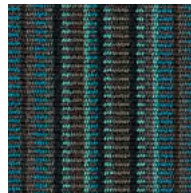
22301 Federal
Taupe



22302 Cool Navy



22303 Swiss Red



22304 Deep Sea



22305 Blue Brown



22306 Red Madder

GEIGER

TEXTILES

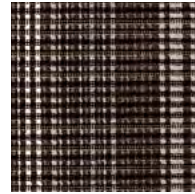
Corduroy Plaid

DESIGNED BY SUSAN LYONS

APPLICATION	Seating
CONTENT	59% Acrylic, 41% Polyester
BACKING	Polyester
WIDTH	55"
REPEAT	19 ½" V, 9¼" H
ABRASION	45,000 Cycles, Martindale
FLAMMABILITY	CA TB 117-2013
WEIGHT	15 Oz Per Linear Yard
ORIGIN	Germany
ENVIRONMENTAL	SCS Indoor Advantage™ Gold
MAINTENANCE	W/S – Clean with Water-Based Cleanser, or Mild, Dry Cleaning Solvent; Bleach Cleanable – Clean with 10:1 Water to Household Bleach
CUSTOM FINISHES	Alta™ Plush; PFOA-Free Stain Resistant Finish
PRICE GROUP	7
NET PRICE	\$72 Per Yard
NOTE	Bleach Cleanable



18910 Cream



18970 Umber



18980 Charcoal



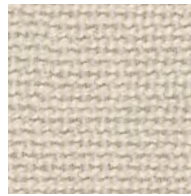
GEIGER

TEXTILES

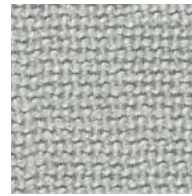
Envie

DESIGNED BY BASSAMFELLOWS

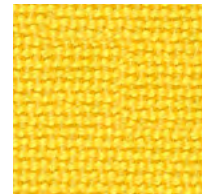
APPLICATION	Seating, Geiger Tackboards, Upholstered Walls
CONTENT	85% Post-Consumer Recycled Polyester, 15% Polyester
FINISH	GreenShield ZERO (PFC-Free, PFOA-Free)
WIDTH	54"
REPEAT	None
ABRASION	100,000 Double Rubs, Wyzenbeek
FLAMMABILITY	CA TB 117-2013; ASTM E84 Unadhered, Class A
WEIGHT	21 Oz Per Linear Yard
ORIGIN	Canada
ENVIRONMENTAL	SCS Indoor Advantage™ Gold Contains Recycled Content FR Chemical Free Prop 65 Chemical Free REACH Compliant PFC-Free Stain Resistant Finish Healthier Hospitals Compliant Living Future Red List Compliant WELL Building Standard Compliant
MAINTENANCE	W/S – Clean with Water-Based Cleanser, or Mild, Dry Cleaning Solvent
CUSTOM FINISHES	Acrylic Backing/PFOA-Free Stain Resistant Finish; Alta; Alta Food & Beverage; Alta Workplace; Nanotex; Nanotex with Impermeable Barrier
PRICE GROUP	5
NET PRICE	\$52 Per Yard



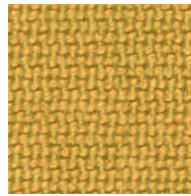
1JA01 Moonlight



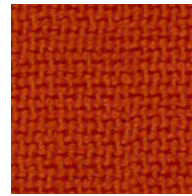
1JA02 Light Gray



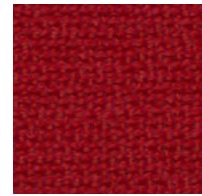
1JA03 Lemon



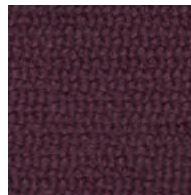
1JA04 Mustard



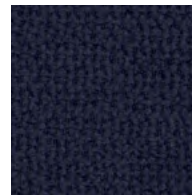
1JA05 Orange



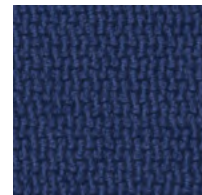
1JA06 Swiss Red



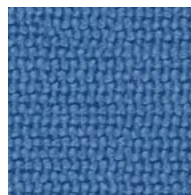
1JA07 Plum



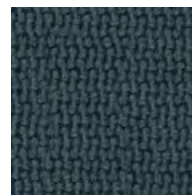
1JA08 Navy



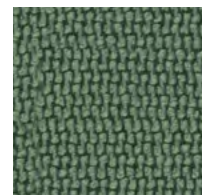
1JA09 Cobalt



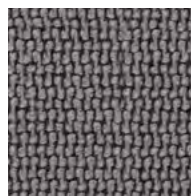
1JA10 Deep
Cerulean Blue



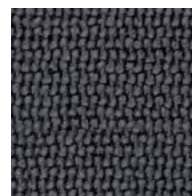
1JA11 Black Green



1JA12 Celadon



1JA13 Sterling



1JA14 Anthracite

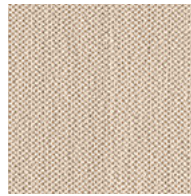
GEIGER

TEXTILES

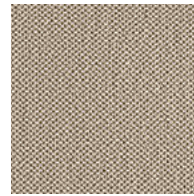
Epinglé

DESIGNED BY SUSAN LYONS

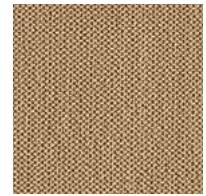
APPLICATION	Seating, Geiger Tackboards
CONTENT	60% Polyester, 40% Acrylic
BACKING	Polyester/Acrylic
WIDTH	56"
REPEAT	None
ABRASION	50,000 Double Rubs, Wyzenbeek
FLAMMABILITY	CA TB 117-2013
WEIGHT	15 Oz Per Linear Yard
ORIGIN	Germany
ENVIRONMENTAL	SCS Indoor Advantage™ Gold
MAINTENANCE	W/S – Clean with Water-Based Cleanser, or Mild, Dry Cleaning Solvent; Bleach Cleanable – Clean with 10:1 Water to Household Bleach
CUSTOM FINISHES	Alta; Alta Food & Beverage; Nanotex; Nanotex; Nanotex with Impermeable Barrier; PFOA-Free Stain Resistant Finish
PRICE GROUP	7
NET PRICE	\$74 Per Yard
NOTE	Bleach Cleanable



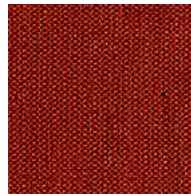
1GC10 Ivory



1GC11 Dune



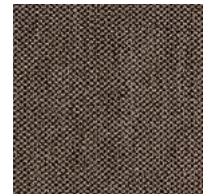
1GC12 Camel



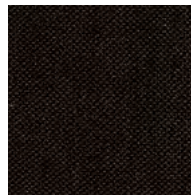
1GC30 Red



1GC50 Navy



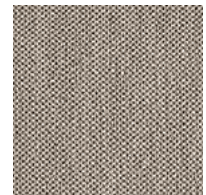
1GC70 Trench



1GC71 Java



1GC80 Charcoal



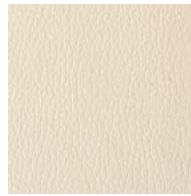
1GC81 Fog

GEIGER

TEXTILES

Granno

APPLICATION	Seating
CONTENT	100% Polyurethane
FINISH	Ink and Stain Resistant
BACKING	Polyester or Polyester/Cotton
WIDTH	54"
REPEAT	None
ABRASION	100,000 Double Rubs, Wyzenbeek
FLAMMABILITY	CA TB 117-2013
WEIGHT	21 Oz Per Linear Yard
ORIGIN	China
ENVIRONMENTAL	SCS Indoor Advantage™ Gold FR Chemical Free Heavy Metal Free Prop 65 Chemical Free Healthier Hospitals Compliant Living Future Red List Compliant WELL Building Standard Compliant
MAINTENANCE	W – Clean with Water-Based Cleanser; Bleach Cleanable – Clean with 10:1 Water to Household Bleach
PRICE GROUP	4
NET PRICE	\$42 Per Yard



17702 Cream



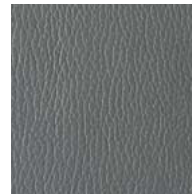
17703 Warm Sand



17704 Ecrú



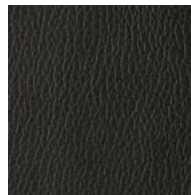
17705 Cement



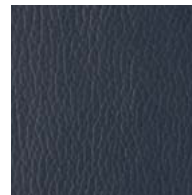
17707 Cargo Gray



17708 Smoke



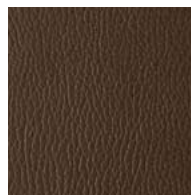
17709 Black



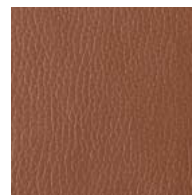
17710 Navy



17711 Claret



17712 Java



17713 Cognac



17780 Abite



17785 Sea Mist



17790 Platinum



17791 Light Silver

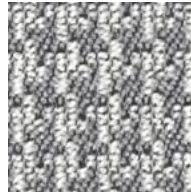
GEIGER

TEXTILES

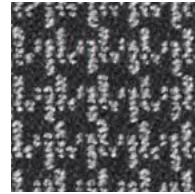
Houndstooth Check

DESIGNED BY BASSAMFELLOWS

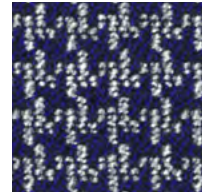
APPLICATION	Seating, Geiger Tackboards
CONTENT	66% Acrylic, 34% Polyester
WIDTH	56"
REPEAT	½" V, ½" H
ABRASION	100,000 Double Rubs, Wyzenbeek
FLAMMABILITY	CA TB 117-2013
WEIGHT	25.5 Oz Per Linear Yard
ORIGIN	Germany
ENVIRONMENTAL	SCS Indoor Advantage™ Gold FR Chemical Free Prop 65 Chemical Free OEKO-TEX® Certified Yarns Healthier Hospitals Compliant Living Future Red List Compliant WELL Building Standard Compliant
MAINTENANCE	W/S – Clean with Water-Based Cleanser, or Mild, Dry Cleaning Solvent; Bleach Cleanable – Clean with 10:1 Water to Household Bleach
CUSTOM FINISHES	Alta; Alta Food & Beverage; Alta Workplace; Nanotex; Nanotex; Nanotex with Impermeable Barrier; PFOA-Free Stain Resistant Finish
PRICE GROUP	5
NET PRICE	\$58 Per Yard
NOTE	Bleach Cleanable



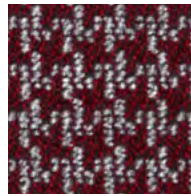
1DC01 Platinum



1DC02 Charcoal



1DC03 Royal



1DC04 Garnet



GEIGER

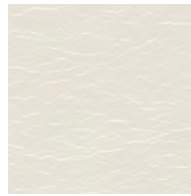
TEXTILES

Lucio

APPLICATION	Seating
CONTENT	100% Polycarbonate Polyurethane
FINISH	Ink and Stain Resistant
BACKING	Rayon/Polyester
WIDTH	54"
REPEAT	None
ABRASION	500,000 Double Rubs, Wyzenbeek*
FLAMMABILITY	CA TB 117-2013
WEIGHT	19.9 Oz Per Linear Yard
ORIGIN	China
ENVIRONMENTAL	SCS Indoor Advantage™ Gold FR Chemical Free Heavy Metal Free Prop 65 Chemical Free Healthier Hospitals Compliant Living Future Red List Compliant WELL Building Standard Compliant
MAINTENANCE	W – Clean with Water-Based Cleanser; Bleach Cleanable – Clean with 10:1 Water to Household Bleach
PRICE GROUP	5
NET PRICE	\$56 Per Yard



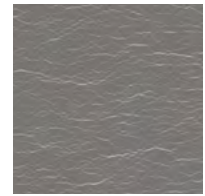
*Results above 100,000 double rubs
have not been shown to be an indicator
of increased lifespan.



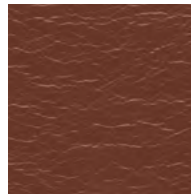
1GL01 Opal



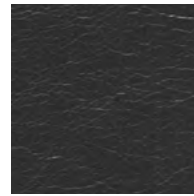
1GL02 Nickel



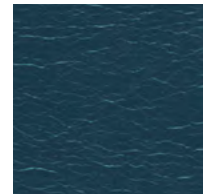
1GL03 Zinc



1GL04 Bronze



1GL05 Onyx



1GL06 Aquatic

GEIGER

TEXTILES

Milaner

DESIGNED BY BASSAMFELLOWS

APPLICATION	Seating
CONTENT	56% Wool, 10% Acrylic, 10% Alpaca, 10% Cotton, 8% Nylon, 6% Rayon
WIDTH	55"
REPEAT	None
ABRASION	70,000 Cycles, Martindale
FLAMMABILITY	CA TB 117-2013
WEIGHT	15.4 Oz Per Linear Yard
ORIGIN	Italy
ENVIRONMENTAL	SCS Indoor Advantage™ Gold Contains Bio-Based Materials
MAINTENANCE	S – Clean with Mild, Dry Cleaning Solvent
CUSTOM FINISHES	Acrylic Backing/PFOA-Free Stain Resistant Finish; Alta; Alta Food & Beverage; Antimicrobial Stain Resistant Finish with Impermeable Barrier; Nanotex; Nanotex with Impermeable Barrier; PFOA-Free Stain Resistant Finish
PRICE GROUP	7
NET PRICE	\$82 Per Yard



17101 Linen



17102 Flax



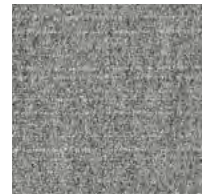
17103 Bark



17104 Deep Navy



17105 Charcoal



17106 Medium Gray



17107 Ash



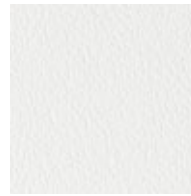
17108 Crimson

GEIGER

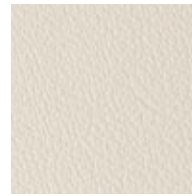
TEXTILES

Novello

APPLICATION	Seating
CONTENT	100% Polycarbonate Polyurethane
FINISH	Ink and Stain Resistant
BACKING	Polyester
WIDTH	54"
REPEAT	None
ABRASION	100,000 Double Rubs, Wyzenbeek
FLAMMABILITY	CA TB 117-2013
WEIGHT	17.7 Oz Per Linear Yard
ORIGIN	China
ENVIRONMENTAL	SCS Indoor Advantage™ Gold FR Chemical Free Heavy Metal Free Prop 65 Chemical Free Healthier Hospitals Compliant Living Future Red List Compliant WELL Building Standard Compliant
MAINTENANCE	W – Clean with Water-Based Cleanser; Bleach Cleanable – Clean with 10:1 Water to Household Bleach
PRICE GROUP	4
NET PRICE	\$42 Per Yard



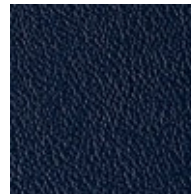
1GR01 Pure



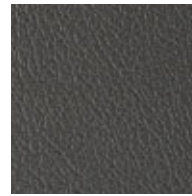
1GR02 Stone



1GR03 Umber



1GR04 Midnight
Blue



1GR05 Grebe



1GR06 Black



GEIGER

TEXTILES

Panno di Dolce

DESIGNED BY BASSAMFELLOWS

APPLICATION	Seating, Geiger Tackboards
CONTENT	65% Wool, 20% Nylon, 15% Alpaca
WIDTH	55"
REPEAT	None
ABRASION	75,000 Cycles, Martindale
FLAMMABILITY	CA TB 117-2013
WEIGHT	15.30 Oz Per Linear Yard
ORIGIN	Italy
ENVIRONMENTAL	SCS Indoor Advantage™ Gold Contains Bio-Based Materials
MAINTENANCE	S – Clean with Mild, Dry Cleaning Solvent
CUSTOM FINISHES	Acrylic Backing/PFOA-Free Stain Resistant Finish; Alta; Alta Food & Beverage; Nanotex; Nanotex with Impermeable Barrier; PFOA-Free Stain Resistant Finish
PRICE GROUP	7
NET PRICE	\$76 per yard



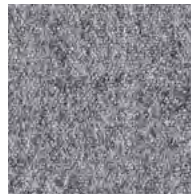
1AV01 Fog



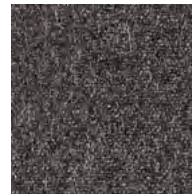
1AV02 Dune



1AV03 Trench



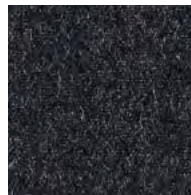
1AV04 Flannel



1AV05 Charcoal



1AV06 Umber



1AV07 Deep Navy



1AV08 Graphite

GEIGER

TEXTILES

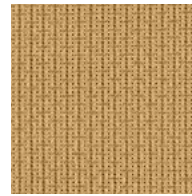
Pinpoint

DESIGNED BY SUSAN LYONS

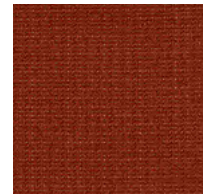
APPLICATION	Seating, Geiger Tackboards, Upholstered Walls
CONTENT	100% Eco Intelligent Polyester
WIDTH	54"
REPEAT	None
ABRASION	75,000 Double Rubs, Wyzenbeek
FLAMMABILITY	CA TB 117-2013; ASTM E84 Unadhered, Class A
WEIGHT	12.1 Oz Per Linear Yard
ORIGIN	Canada
ENVIRONMENTAL	SCS Indoor Advantage™ Gold Facts® Gold Certified
MAINTENANCE	W/S – Clean with Water-Based Cleanser, or Mild, Dry Cleaning Solvent
CUSTOM FINISHES	Acrylic Backing/PFOA-Free Stain Resistant Finish; Alta, Alta Food & Beverage; Nanotex; Nanotex with Impermeable Barrier; PFOA-Free Stain Resistant Finish
PRICE GROUP	3
NET PRICE	\$32 Per Yard



19810 Cream



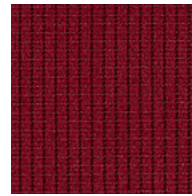
19811 Camel



19820 Luggage



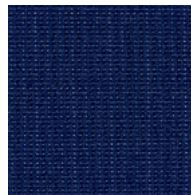
19830 Red



19831 Wine



19832 Cordovan



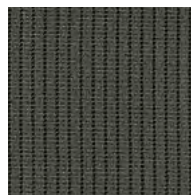
19850 Navy



19870 Trench



19880 Charcoal



19881 Grey

GEIGER

TEXTILES

Resca

DESIGNED BY BASSAMFELLOWS

APPLICATION	Seating, Geiger Tackboards
CONTENT	75% Wool, 10% Linen, 8% Nylon, 7% Alpaca
WIDTH	56"
REPEAT	None
ABRASION	40,000 Cycles, Martindale
FLAMMABILITY	CA TB 117-2013
WEIGHT	20.7 Oz Per Linear Yard
ORIGIN	Italy
ENVIRONMENTAL	SCS Indoor Advantage™ Gold Contains Bio-Based Materials
MAINTENANCE	S – Clean with Mild, Dry Cleaning Solvent
CUSTOM FINISHES	Acrylic Backing/PFOA-Free Stain Resistant Finish; Alta; Alta Food & Beverage; Nanotex; Nanotex with Impermeable Barrier; PFOA-Free Stain Resistant Finish
PRICE GROUP	7
NET PRICE	\$86 Per Yard



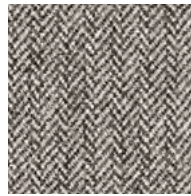
1AW01 Fog



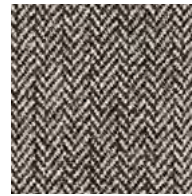
1AW02 Dune



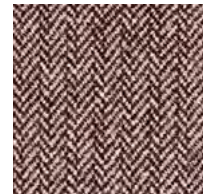
1AW03 Trench



1AW04 Flannel



1AW05 Umber



1AW06 Bordeaux

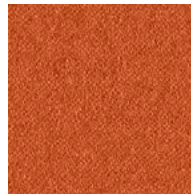
GEIGER

TEXTILES

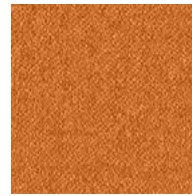
Sateen Weave

DESIGNED BY BASSAMFELLOWS

APPLICATION	Seating, Geiger Tackboards
CONTENT	92% Wool, 8% Nylon
WIDTH	54"
REPEAT	None
ABRASION	40,000 Cycles, Martindale
FLAMMABILITY	CA TB 117-2013
WEIGHT	17 Oz Per Linear Yard
ORIGIN	Great Britain
ENVIRONMENTAL	SCS Indoor Advantage™ Gold Contains Bio-Based Materials
MAINTENANCE	S – Clean with Mild, Dry Cleaning Solvent
CUSTOM FINISHES	Acrylic Backing/PFOA-Free Stain Resistant Finish; Alta; Alta Food & Beverage; Antimicrobial Stain Resistant Finish with Impermeable Barrier; Nanotex; Nanotex with Impermeable Barrier; PFOA-Free Stain Resistant Finish
PRICE GROUP	7
NET PRICE	\$94 Per Yard



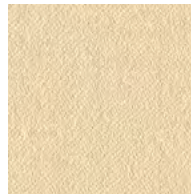
16301 Bright Red



16302 Cognac Brown



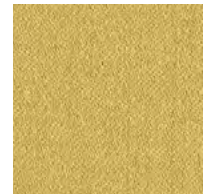
16303 Pale Chestnut Brown



16304 Pale Native Umber



16305 Light Native Umber



16306 Sahara Sand Deep



16307 Light Blue



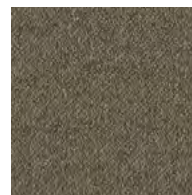
16308 Deep Cerulean Blue



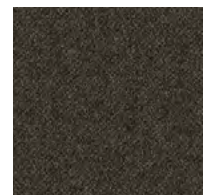
16309 Light Veronese Green



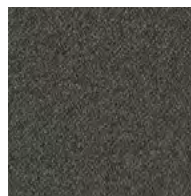
16310 Black Green



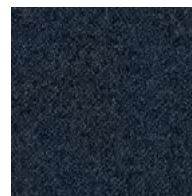
16311 Deep Native Umber



16312 Chestnut Brown



16313 Natural Native Umber



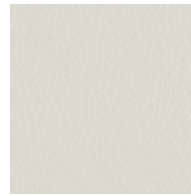
16314 Navy

GEIGER

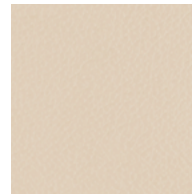
TEXTILES

Semplice

APPLICATION	Seating
CONTENT	European Top Grain, Semi-Aniline Dyed Cowhide, Embossed
TANNING	Chrome-free, Synthetic Vegetable
FINISH	Water-Based Color Pigmented Protective Topcoat
AVERAGE HIDE	50-55 Square Feet
FLAMMABILITY	CA TB 117-2013
WEIGHT	2.75 Oz Per Square Foot
THICKNESS	1.1 mm +/- .1 mm
ORIGIN	Austria
ENVIRONMENTAL	SCS Indoor Advantage™ Gold FR Chemical Free Heavy Metal Free Prop 65 Chemical Free Oeko-Tex Certified Healthier Hospitals Compliant Living Future Red List Compliant WELL Building Standard Compliant
PRICE GROUP	8
NET PRICE	\$8 Per Square Foot



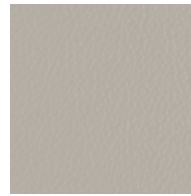
1SE01 Alabaster



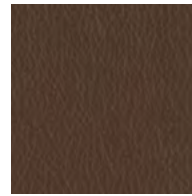
1SE02 Stone



1SE03 Parchment



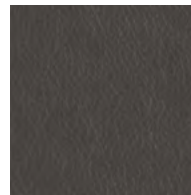
1SE04 Titanium



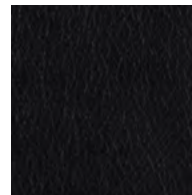
1SE05 Dark Brown



1SE06 Prussian Blue



1SE07 Charcoal



1SE08 Black

GEIGER

TEXTILES

Staple

DESIGNED BY BASSAMFELLOWS

APPLICATION	Seating
CONTENT	100% Wool
BACKING	Cotton
WIDTH	54"
REPEAT	None
ABRASION	250,000 Cycles, Martindale*
FLAMMABILITY	CA TB 117-2013
WEIGHT	21.7 Oz Per Linear Yard
ORIGIN	Belgium
ENVIRONMENTAL	SCS Indoor Advantage™ Gold Contains Bio-Based Materials
MAINTENANCE	S – Clean with Mild, Dry Cleaning Solvent
CUSTOM FINISHES	Alta™ Plush; PFOA-Free Stain Resistant Finish
PRICE GROUP	8
NET PRICE	\$120 Per Yard

*Results above 100,000 cycles have not been shown to be an indicator of increased lifespan.



16101 Light
Native Umber



16102 Medium
Native Umber



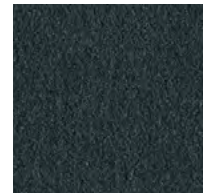
16103 Pearl Gray



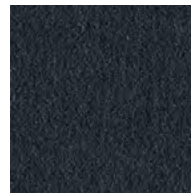
16104 Light Gray



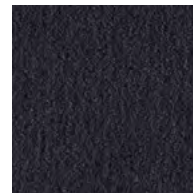
16105 Ferric Gray



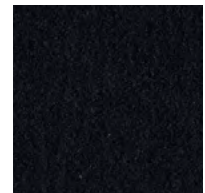
16106 Black Green



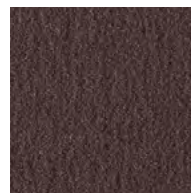
16107 Prussian Blue



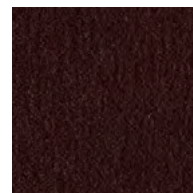
16108 Navy



16109 Burnt Umber



16110 Chestnut
Brown



16111 Ruby Red

GEIGER

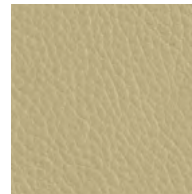
TEXTILES

Tenera

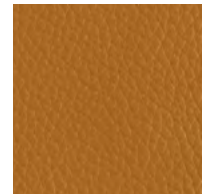
APPLICATION	Seating
CONTENT	European Full Grain Semi-Aniline Dyed Cowhide, Enhanced for Uniform Grain
TANNING	Chrome-Free, Synthetic Vegetable
FINISH	Breathable Water-Based Protective Topcoat
AVERAGE HIDE	50-55 Square Feet
FLAMMABILITY	CA TB 117-2013
WEIGHT	3.5 Oz Per Square Foot
THICKNESS	1.5 mm +/- .1 mm
ORIGIN	Austria
ENVIRONMENTAL	SCS Indoor Advantage™ Gold FR Chemical Free Heavy Metal Free Prop 65 Chemical Free Oeko-Tex Certified Healthier Hospitals Compliant Living Future Red List Compliant WELL Building Standard Compliant
PRICE GROUP	11
NET PRICE	\$13 Per Square Foot



17501 Cement



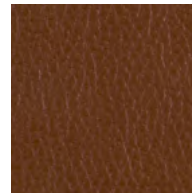
17502 Marzipan



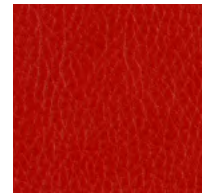
17503 Sunglow



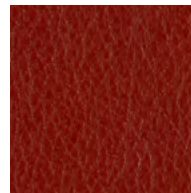
17504 Raw Sienna



17505 Maple



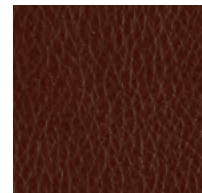
17506 Poppy



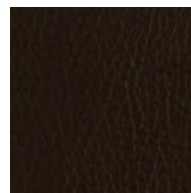
17507 Salsa



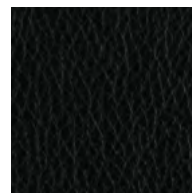
17508 Cranberry



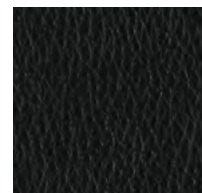
17509 Burnt Sienna



17510 Dark
Chocolate



17511 Black



17512 Carbon



17513 Sapphire

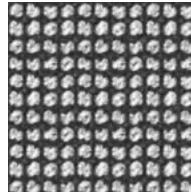
GEIGER

TEXTILES

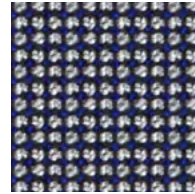
Tenon

DESIGNED BY BASSAMFELLOWS

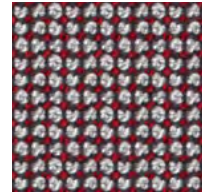
APPLICATION	Seating, Geiger Tackboards
CONTENT	63% Acrylic, 37% Polyester
WIDTH	56"
ABRASION	95,000 Double Rubs, Wyzenbeek
FLAMMABILITY	CA TB 117-2013
WEIGHT	19.8 Oz Per Linear Yard
ORIGIN	Germany
ENVIRONMENTAL	SCS Indoor Advantage™ Gold FR Chemical Free Prop 65 Chemical Free OEKO-TEX® Certified Yarns Healthier Hospitals Compliant Living Future Red List Compliant
MAINTENANCE	W/S – Clean with Water-Based Cleanser, or Mild, Dry Cleaning Solvent; Bleach Cleanable – Clean with 10:1 Water to Household Bleach
CUSTOM FINISHES	Alta; Alta Food & Beverage; Alta Workplace; Nanotex; Nanotex; Nanotex with Impermeable Barrier; PFOA-Free Stain Resistant Finish
PRICE GROUP	5
NET PRICE	\$54 Per Yard
NOTE	Bleach Cleanable



1DE01 Charcoal



1DE02 Royal



1DE03 Garnet



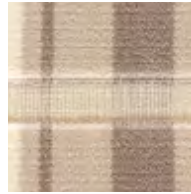
GEIGER

TEXTILES

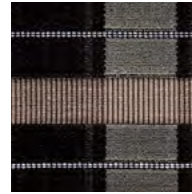
Velvet Plaid

DESIGNED BY SUSAN LYONS

APPLICATION	Seating
CONTENT	100% Acrylic
BACKING	Polyester/Acrylic
WIDTH	55"
REPEAT	9 ¼" V, 9 ½" H
ABRASION	50,000 Double Rubs, Wyzenbeek
FLAMMABILITY	CA TB 117-2013
WEIGHT	20 Oz Per Linear Yard
ORIGIN	Germany
ENVIRONMENTAL	SCS Indoor Advantage™ Gold
MAINTENANCE	W/S – Clean with Water-Based Cleanser, or Mild, Dry Cleaning Solvent; Bleach Cleanable – Clean with 10:1 Water to Household Bleach
CUSTOM FINISHES	Alta™ Plush; PFOA-Free Stain Resistant Finish
PRICE GROUP	7
NET PRICE	\$78 Per Yard
NOTE	Bleach Cleanable



20110 Cream



20180 Charcoal



GEIGER

TEXTILES

Vionette

DESIGNED BY BASSAMFELLOWS

APPLICATION	Seating, Geiger Tackboards, Upholstered Walls
CONTENT	100% Polyester
WIDTH	55"
REPEAT	None
ABRASION	80,000 Double Rubs, Wyzenbeek
FLAMMABILITY	CA TB 117-2013; ASTM E84 Unadhered, Class A
WEIGHT	22.3 Oz Per Linear Yard
ORIGIN	Italy
ENVIRONMENTAL	SCS Indoor Advantage™ Gold
MAINTENANCE	S – Clean with Mild, Dry Cleaning Solvent
CUSTOM FINISHES	Acrylic Backing/PFOA-Free Stain Resistant Finish; Alta; Alta Food & Beverage; Nanotex; Nanotex with Impermeable Barrier; PFOA-Free Stain Resistant Finish
PRICE GROUP	5
NET PRICE	\$56 Per Yard



1GJ01 White
Sand Mix



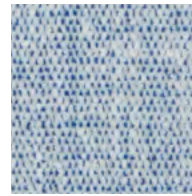
1GJ02 Desert Mix



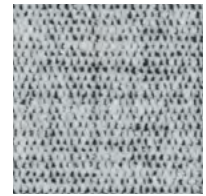
1GJ03 Light Gray
Mix



1GJ04 Pewter Mix



1GJ05 Cobalt Mix



1GJ06 Prussian
Blue Mix



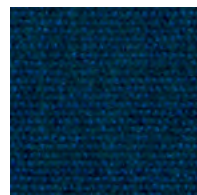
1GJ07 Chocolate
Mix



1GJ08 Champagne



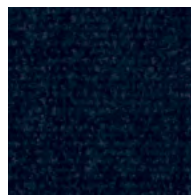
1GJ09 Morning Sky



1GJ10 Aquatic



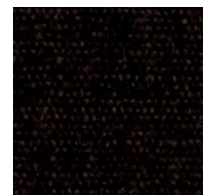
1GJ11 Sapphire



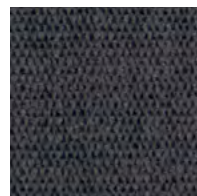
1GJ12 Midnight
Blue



1GJ13 Shadow



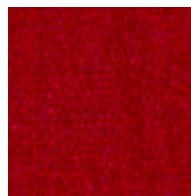
1GJ14 Java



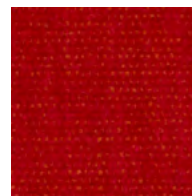
1GJ15 Carbon



1GJ16 Black



1GJ17 Claret



1GJ18 Poppy

GEIGER

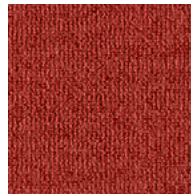
TEXTILES

Wool Epingle

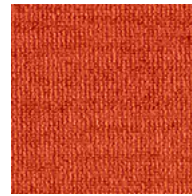
DESIGNED BY BASSAMFELLOWS

APPLICATION	Seating
CONTENT	100% Wool
BACKING	Cotton
WIDTH	54"
REPEAT	None
ABRASION	65,000 Cycles, Martindale
FLAMMABILITY	CA TB 117-2013
WEIGHT	22.1 Oz Per Linear Yard
ORIGIN	Belgium
ENVIRONMENTAL	SCS Indoor Advantage™ Gold Contains Bio-Based Materials
MAINTENANCE	S – Clean with Mild, Dry Cleaning Solvent
CUSTOM FINISHES	PFOA-Free Stain Resistant Finish
PRICE GROUP	7
NET PRICE	\$102 Per Yard

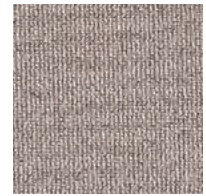
NOTE Subtle Shade Variation is a Natural Effect



16201 Swiss Red



16202 Orange



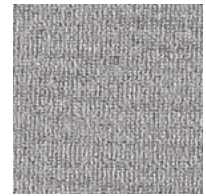
16203 Light Chestnut Brown



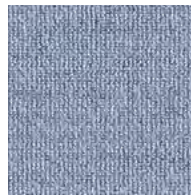
16204 Light Burnt Umber



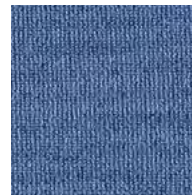
16205 Pale Native Umber



16207 Gray



16208 Natier Blue



16209 Deep Cerulean Blue



16210 Anthracite



16211 Natural Native Umber



16212 Chestnut Brown

GEIGER

TEXTILES

Wool Satin

DESIGNED BY SUSAN LYONS

APPLICATION	Seating, Geiger Tackboards
CONTENT	40% Polyester, 33% Wool, 27% Cotton
WIDTH	56"
REPEAT	None
ABRASION	30,000 Double Rubs, Wyzenbeek
FLAMMABILITY	CA TB 117-2013
WEIGHT	15.03 Oz Per Linear Yard
ORIGIN	Germany
ENVIRONMENTAL	SCS Indoor Advantage™ Gold Contains Bio-Based Materials
MAINTENANCE	S – Clean with Mild, Dry Cleaning Solvent
CUSTOM FINISHES	Acrylic Backing/PFOA-Free Stain Resistant Finish; Alta; Alta Food & Beverage; Nanotex; Nanotex with Impermeable Barrier; PFOA-Free Stain Resistant Finish
PRICE GROUP	7
NET PRICE	\$76 Per Yard



20270 Trench



20271 Umber



20280 Flannel



20281 Charcoal



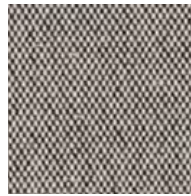
GEIGER

TEXTILES

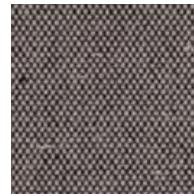
Wool Tweed

DESIGNED BY BASSAMFELLOWS

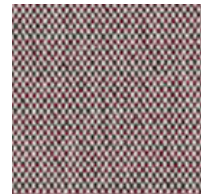
APPLICATION	Seating, Geiger Tackboards
CONTENT	80% Wool, 20% Nylon
WIDTH	54"
REPEAT	None
ABRASION	70,000 Cycles, Martindale
FLAMMABILITY	CA TB 117-2013
WEIGHT	21.6 Oz Per Linear Yard
ORIGIN	New Zealand
ENVIRONMENTAL	SCS Indoor Advantage™ Gold Contains Bio-Based Materials
MAINTENANCE	S – Clean with Mild, Dry Cleaning Solvent
CUSTOM FINISHES	Acrylic Backing/PFOA-Free Stain Resistant Finish; Alta; Alta Food & Beverage; Antimicrobial Stain Resistant Finish with Impermeable Barrier; Nanotex; Nanotex with Impermeable Barrier; PFOA-Free Stain Resistant Finish
PRICE GROUP	7
NET PRICE	\$90 Per Yard



16601 Trench



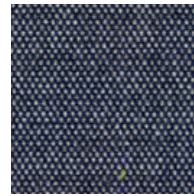
16602 Pewter



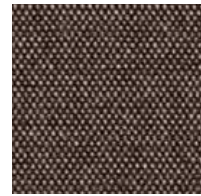
16603 Ruby



16604 Blue Gray



16605 Navy



16606 Umber



16607 Charcoal

Warranty

Unless otherwise stated, Geiger Textiles meet or exceed Association for Contract Textiles (ACT) quality and performance standards. Additional fabric finishes applied after purchase will void any Geiger Textiles warranty.

Geiger guarantees that Geiger Textiles will perform in accordance with accepted industry standards when used under normal conditions, during single shift operation, with proper maintenance and for the purpose intended:

- For a period of three years from date of purchase for upholstery products that meet all general contract textile requirements in accordance with ACT standards.
- No warranty is given for any other products.

Geiger Textiles warranty will be limited to the refund of the purchase price or replacement of the fabric with a mutually agreed upon replacement, and does not include any labor costs. This warranty does not cover: (a) installation contrary to Geiger Textiles installation guidelines or proper installation practices; (b) damage caused by mold or mildew; (c) reverse crocking; (d) improper use; (e) improper maintenance; (f) improper storage or handling; (g) use of incompatible or unspecified adhesive, materials, tools or equipment; (h) inadequacies or defects in building design or constructions; and (i) any other damage or problem due to external causes unrelated to any Geiger Textiles product defect.

This warranty is non-transferable and non-assignable.

Warranty-related claims must be submitted in writing to Geiger within above stated warranty period from date of invoice.

WARRANTY DISCLAIMERS

The above express warranties are the exclusive warranties given by Geiger Textiles. All other warranties, express or implied, are expressly disclaimed, including without limitation as to merchantability, fitness for any particular purpose or use or otherwise.

Additional Information

SAMPLES

Samples of Geiger Textiles and leathers are available upon request. Please contact your sales representative or call 800.456.6452 to request samples.

RESERVES

Based on availability, Geiger Textiles will reserve specific quantities of textiles or leathers for a 10-day period.

ORDER INFORMATION

All textiles are sold to the nearest one-quarter yard, with a two yard minimum per colorway. A \$20 charge applies to orders under the minimum. Specify number, pattern name, and color. Leather is sold to the nearest one-half hide. One complete hide is approximately 55 square feet. Specify number and color.

Orders may be sent via email or fax at 404-836-7519. For assistance with this process, please contact Geiger Customer Care at 800-456-6452. Herman Miller dealers must submit all purchase orders to Geiger via Omni.

Midwest
custcaremw@geigerfurniture.com

Northeast
custcarene@geigerfurniture.com

New York
custcareny@geigerfurniture.com

South
custcaresouth@geigerfurniture.com

West
custcarewest@geigerfurniture.com

International
custcareintl@geigerfurniture.com

FREIGHT

For textile and leather orders, the actual freight charges will be invoiced. Orders are shipped via ground carrier unless requested otherwise. All textile shipments will be made FOB. Geiger Textiles, Yaphank, NY 11980. All leather shipments will be made FOB. Geiger Textiles, Hildebran, NC 28637.

TAXES

Customer is responsible for any applicable sales taxes charged based on destination of the product.

RETURNS

Materials may not be returned without written approval from Geiger Textiles, and Geiger Textiles will not accept for return any textile piece less than 10 yards long nor any piece that is not in excellent condition. Customer is responsible for the cost of return freight. Geiger Textiles will charge a 30% restocking fee on approved returns. Custom-dyed or custom-woven materials may not be returned.

LEATHER

Color may vary from samples. Natural marks such as scars, cuts, and other natural imperfections, especially on non-pigmented surfaces, are considered normal in leather. Upon request, dye lot samples can be sent for customer approval. Leather footage is estimated on the basis of usable square footage of soft, supple (2.5 to 3.5 oz.) leather suitable for upholstery.

CUSTOM COLORS

Geiger Textiles offers custom colors in any of its standard weaves or leathers. Minimum order required; lead-times apply for color strike off and production. Customer is responsible for the cost of overage, approximately 10 to 15 percent, on the production run. Custom-dyed or custom woven materials may not be canceled or returned. Customs are sold in full bolt or full hide increments, once minimum quantity is met. Minimum quantity and bolt size vary according to the style.

Maintenance Guideline - S

MAINTENANCE CODE

S – Clean with Mild, Dry Cleaning Solvent

REGULAR MAINTENANCE

Vacuum regularly using the proper attachment to avoid pilling.

GENERAL RECOMMENDATIONS

Treat stains promptly. The longer a stain remains on the textile, the more difficult it will be to remove. A professional furniture cleaning service is recommended.

Always pre-test any cleaning method in an inconspicuous area.

Several light applications of a cleaning agent are less harmful than a single concentrated application. Repeat stain treatment several times if necessary.

Never use heat to clean textiles. Heat can set stains.

Do not use agents containing bleach. These agents may cause discoloration over time.

Do not oversaturate the textile or let water pool in seams.

STAIN TREATMENT

Soak up any excess moisture immediately.

For oil and water-based stains, use a clean, soft, white cloth, a natural sponge, or a nylon, soft-bristle brush with a water-free dry cleaning solvent. Brush the stain with light, quick strokes. Avoid a scrubbing motion and work from the edge of the stain toward the center.

For insoluble stains (e.g. chewing gum, candle wax, etc.), use a plastic bag filled with ice to rub the stain until the substance becomes brittle. Use a clean, dull, flat knife to gently remove the substance.

Rinse stain treatment thoroughly with a natural sponge moistened slightly with cool, clean water and completely remove all cleaning solution residue as left over residue can attract soil over time.

Extra care should be taken when cleaning dark colors to avoid creating light marks that can be caused by color transfer.

Avoid excess rubbing to prevent discoloration and damage to the face of the material.

Do not saturate the surface.

Allow the textile to dry thoroughly and vacuum before using.

The information above is a guide to help in the maintenance of Geiger Textiles. Geiger can neither guarantee, nor take responsibility for specific results.

Under no circumstances shall Geiger be liable for any incidental, consequential, or other damage resulting from negligence, misuse, mishandling, or exposure of any chemicals used in connection with maintenance. Information relating to chemicals/cleaning solvents, environmental use, and human exposure should be reviewed with appropriate suppliers.

All label instructions on their use and precautions should be followed.

Maintenance Guideline - W

MAINTENANCE CODE

W – Clean with Water-Based Cleanser

REGULAR MAINTENANCE

For upholstery products, vacuum regularly using the proper attachments to avoid pilling.

GENERAL RECOMMENDATIONS

Treat stains promptly. The longer a stain remains on the textile, the more difficult it will be to remove. A professional furniture cleaning service is recommended.

Always pre-test any cleaning method in an inconspicuous area.

Several light applications of a cleaning agent are less harmful than a single concentrated application. Repeat stain treatment several times if necessary.

Never use heat to clean textiles. Heat can set stains.

Do not use solvent-based cleaning agents such as lacquer thinners, nail polish remover, pine oil or cleaning agents containing bleach.

These agents may cause discoloration over time.

Do not oversaturate the textile or let water pool in seams.

The information above is a guide to help in the maintenance of Geiger Textiles. Geiger can neither guarantee, nor take responsibility for specific results.

STAIN TREATMENT

Soak up any excess moisture immediately.

For oil and water-based stains, use a clean, soft, white cloth, or a natural sponge, with lukewarm, soapy water. Brush the stain with light, quick strokes. Avoid a scrubbing motion and work from the edge of the stain toward the center.

For solid stains (e.g. mud) allow the stain to dry thoroughly and gently break up any hardened areas. Use a nylon, soft bristle brush to remove all loose particles.

For insoluble stains (e.g. chewing gum, candle wax, etc.), use a plastic bag filled with ice to rub the stain until the substance becomes brittle. Use a clean, dull, flat knife to gently remove the substance. If the stain persists, blot the area with a clean, soft, white cloth or natural sponge and lukewarm soapy water.

For ink stains and scuff marks on vinyl wallcovering, gently blot the stain with isopropyl (rubbing) alcohol. This treatment will lighten the stain but will not remove it completely.

Rinse stain treatment thoroughly with a natural sponge moistened slightly with cool, clean water and completely remove all cleaning solution residue as left over residue can attract soil over time.

Extra care should be taken when cleaning dark colors to avoid creating light marks that can be caused by color transfer.

Avoid excess rubbing to prevent discoloration and damage to the face of the material.

Do not saturate the surface.

Allow the textile to dry thoroughly and vacuum natural wallcovering textiles before using.

Under no circumstances shall Geiger be liable for any incidental, consequential, or other damage resulting from negligence, misuse, mishandling, or exposure of any chemicals used in connection with maintenance. Information relating to chemicals/cleaning solvents, environmental use, and human exposure should be reviewed with appropriate suppliers.

All label instructions on their use and precautions should be followed.

Maintenance Guideline - W, Bleach Cleanable

MAINTENANCE CODE

W – Clean with Water-Based Cleanser

Bleach Cleanable – Clean with 10:1 Water to Household Bleach

REGULAR MAINTENANCE

Vacuum regularly using the proper attachment to avoid pilling. For non-woven textiles, wipe regularly with damp, clean, soft, white cloth or natural sponge.

GENERAL RECOMMENDATIONS

Treat stains promptly. The longer a stain remains on the textile, the more difficult it will be to remove. A professional furniture cleaning service is recommended.

Always pre-test any cleaning method in an inconspicuous area.

Several light applications of a cleaning agent are less harmful than a single concentrated application. Repeat stain treatment several times if necessary.

Never use heat to clean textiles. Heat can set stains.

Do not use solvent-based cleaning agents such as lacquer thinners, nail polish remover, or pine oil. These agents may cause discoloration over time.

Do not oversaturate the textile or let water pool in seams.

STAIN TREATMENT

Soak up any excess moisture immediately.

For oil and water-based stains, use a clean, soft, white cloth, a natural sponge, or a nylon soft-bristle brush with lukewarm, soapy water. Brush the stain with light, quick strokes. Avoid a scrubbing motion and work from the edge of the stain toward the center.

The information above is a guide to help in the maintenance of Geiger Textiles. Geiger can neither guarantee, nor take responsibility for specific results.

For tougher oil-based stains, confirm the construction of your textile is bleach cleanable. If so, and additional stain treatment is needed, use a 10% solution of diluted household bleach. Thoroughly rinse with cool, clean water to remove any residue.

For ink stains on ink resistant non-woven textiles, a 91% solution of isopropyl alcohol may also be used. Thoroughly rinse with cool, clean water to remove any residue.

For solid stains (e.g. mud) allow the stain to dry thoroughly and gently break up any hardened areas. Use a nylon, soft bristle brush to remove all loose particles.

For insoluble stains (e.g. chewing gum, candle wax, etc.), use a plastic bag filled with ice to rub the stain until the substance becomes brittle. Use a clean, dull, flat knife to gently remove the substance. If the stain persists, blot the area with a clean, soft, white cloth or natural sponge and lukewarm soapy water.

For blood and bodily fluid stains, follow the oil-based stain treatment above. If the stain persists, gently dab a pH-neutral cleanser, upholstery spot cleaner, or an equal mixture of water and enzyme detergent (e.g. laundry detergent) on the stain and let it sit for one minute.

Rinse stain treatment thoroughly with a natural sponge moistened slightly with cool, clean water and completely remove all cleaning solution residue as left over residue can attract soil over time.

Extra care should be taken when cleaning dark colors of woven textiles to avoid creating light marks that can be caused by color transfer.

Avoid excess rubbing in order to prevent discoloration and damage to the face of the material. Do not saturate the surface.

For woven textiles, allow the textile to dry thoroughly and vacuum before using.

Under no circumstances shall Geiger be liable for any incidental, consequential, or other damage resulting from negligence, misuse, mishandling, or exposure of any chemicals used in connection with maintenance. Information relating to chemicals/cleaning solvents, environmental use, and human exposure should be reviewed with appropriate suppliers.

All label instructions on their use and precautions should be followed.

Maintenance Guideline - W/S

MAINTENANCE CODE

W/S – Clean with Water-Based Cleanser, or Mild, Dry Cleaning Solvent

REGULAR MAINTENANCE

Vacuum regularly using the proper attachment to avoid pilling.

GENERAL RECOMMENDATIONS

Treat stains promptly. The longer a stain remains on the textile, the more difficult it will be to remove. A professional furniture cleaning service is recommended.

Always pre-test any cleaning method in an inconspicuous area.

Several light applications of a cleaning agent are less harmful than a single concentrated application. Repeat stain treatment several times if necessary.

Never use heat to clean textiles. Heat can set stains.

Do not use agents containing bleach. These agents may cause discoloration over time.

Do not oversaturate the textile or let water pool in seams.

The information above is a guide to help in the maintenance of Geiger Textiles. Geiger can neither guarantee, nor take responsibility for specific results.

STAIN TREATMENT

Soak up any excess moisture immediately.

For water-based stains, use a clean, soft, white cloth, a natural sponge, or a nylon soft-bristle brush with lukewarm, soapy water. Brush the stain with light, quick strokes. Avoid a scrubbing motion and work from the edge of the stain toward the center.

For oil-based stains, use a clean, soft, white cloth, a natural sponge, or a nylon, soft-bristle brush with a water-free dry cleaning solvent. Brush the stain with light, quick strokes. Avoid a scrubbing motion. Work from the edge of the stain toward the center.

For insoluble stains (e.g. chewing gum, candle wax, etc.), use a plastic bag filled with ice to rub the stain until the substance becomes brittle. Use a clean, dull, flat knife to gently remove the substance. If the stain persists, blot the area with a clean, soft, white cloth or natural sponge and lukewarm soapy water.

If the stain persists, gently dab a pH-neutral cleanser, upholstery spot cleaner, or an equal mixture of water and enzyme detergent (e.g. laundry detergent) on the stain and let it sit for one minute.

Rinse stain treatment thoroughly with a natural sponge moistened slightly with cool, clean water and completely remove all cleaning solution residue as left over residue can attract soil over time.

Extra care should be taken when cleaning dark colors to avoid creating light marks that can be caused by color transfer.

Avoid excess rubbing to prevent discoloration and damage to the face of the material.

Do not saturate the surface.

Allow the textile to dry thoroughly and vacuum before using.

Under no circumstances shall Geiger be liable for any incidental, consequential, or other damage resulting from negligence, misuse, mishandling, or exposure of any chemicals used in connection with maintenance. Information relating to chemicals/cleaning solvents, environmental use, and human exposure should be reviewed with appropriate suppliers.

All label instructions on their use and precautions should be followed.

Maintenance Guideline - W/S, Bleach Cleanable

MAINTENANCE CODE

W/S – Clean with Water-Based Cleanser, or Mild, Dry Cleaning Solvent

Bleach Cleanable – Clean with 10:1 Water to Household Bleach

REGULAR MAINTENANCE

Vacuum regularly using the proper attachment to avoid pilling.

GENERAL RECOMMENDATIONS

Treat stains promptly. The longer a stain remains on the textile, the more difficult it will be to remove. A professional furniture cleaning service is recommended.

Always pre-test any cleaning method in an inconspicuous area.

Several light applications of a cleaning agent are less harmful than a single concentrated application. Repeat stain treatment several times if necessary.

Never use heat to clean textiles. Heat can set stains.

Do not oversaturate the textile or let water pool in seams.

STAIN TREATMENT

Soak up any excess moisture immediately.

For water-based stains, use a clean, soft, white cloth, a natural sponge, or a nylon soft-bristle brush with lukewarm, soapy water. Brush the stain with light, quick strokes. Avoid a scrubbing motion and work from the edge of the stain toward the center.

For oil-based stains, use a clean, soft, white cloth, a natural sponge, or a nylon, soft-bristle brush with a water-free dry cleaning solvent. Brush the stain with light, quick strokes. Avoid a scrubbing motion. Work from the edge of the stain toward the center.

For tougher oil-based stains, confirm the construction of your textile is bleach cleanable. If so, and additional stain treatment is needed, use a 10% solution of diluted household bleach. Thoroughly rinse with cool, clean water and completely remove all cleaning residue.

For insoluble stains (e.g. chewing gum, candle wax, etc.), use a plastic bag filled with ice to rub the stain until the substance becomes brittle. Use a clean, dull, flat knife to gently remove the substance. If the stain persists, blot the area with a clean, soft, white cloth or natural sponge and lukewarm soapy water.

If the stain persists, gently dab a pH-neutral cleanser, upholstery spot cleaner, or an equal mixture of water and enzyme detergent (e.g. laundry detergent) on the stain and let it sit for one minute.

Rinse stain treatment thoroughly with a natural sponge moistened slightly with cool, clean water and completely remove all cleaning solution residue as left over residue can attract soil over time.

Extra care should be taken when cleaning dark colors to avoid creating light marks that can be caused by color transfer.

Avoid excess rubbing to prevent discoloration and damage to the face of the material.

Do not saturate the surface.

Allow the textile to dry thoroughly and vacuum before using.

The information above is a guide to help in the maintenance of Geiger Textiles. Geiger can neither guarantee, nor take responsibility for specific results.

Under no circumstances shall Geiger be liable for any incidental, consequential, or other damage resulting from negligence, misuse, mishandling, or exposure of any chemicals used in connection with maintenance. Information relating to chemicals/cleaning solvents, environmental use, and human exposure should be reviewed with appropriate suppliers.

All label instructions on their use and precautions should be followed.

Leather Maintenance

To maintain the quality of your Geiger leather, please follow the cleaning procedures outlined.

The instructions for the care and maintenance of Geiger products are provided to you as a service. No warranty is implied since results may vary.

NORMAL CLEANING

Vacuum or dust frequently with a clean, dry cloth.

If leather is soiled, it can be wiped with a soft, damp cloth using a lather of any mild soap with lukewarm water.

Do not spot clean leather; clean the entire surface.

Wipe clean with a damp cloth and dry with a clean, soft cloth.

SPOTS AND SPILLS

Wipe excess liquid immediately with a clean cloth or sponge; let the leather air dry.

If further cleaning is necessary, sponge the entire surface—seat, back, or chair arm—with lukewarm water.

Let the leather air dry; never use a hair dryer or other heat source to dry leather.

STUBBORN SPOTS AND STAINS

Apply a mild, nonabrasive soap solution with a clean, wet sponge.

Rinse well and let air dry.

BUTTER, OIL, OR GREASE

Wipe the leather with a clean, dry cloth and let the remainder of the oil dissipate into the leather.

Do not apply water or try to wash a grease spot.

Do not use saddle soap, cleaning solvents, oils, furniture polishes, varnishes, abrasive cleaners, detergents, or ammonia on leather; they will ruin the finish, causing it to become sticky and cracked.

If the stain remains, contact a professional cleaner.

LARGE AREAS

If large areas are soiled, contact a professional cleaning firm.

The information above is a guide to help in the maintenance of Geiger Textiles. Geiger can neither guarantee, nor take responsibility for specific results.

Under no circumstances shall Geiger be liable for any incidental, consequential, or other damage resulting from negligence, misuse, mishandling, or exposure of any chemicals used in connection with maintenance. Information relating to chemicals/cleaning solvents, environmental use, and human exposure should be reviewed with appropriate suppliers.

All label instructions on their use and precautions should be followed.

Healthcare Recommendations All Cleaning Codes

HEALTHCARE RECOMMENDATIONS

Healthcare facilities should follow safety protocols for biological hazards and/or anti-viral treatments during the cleaning process.

Always pre-test in an inconspicuous area before cleaning. After cleaning, rinse repeatedly with cool, clean water to ensure complete removal of all cleaning solution residue. Left over residue can discolor over time.

For a complete list of approved hospital grade cleansers, contact your sales representative.