

GEIGER

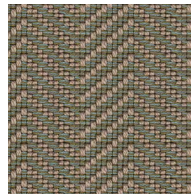
TEXTILES

True Herringbone

DESIGNED BY BASSAMFELLOWS

| | |
|-----------------|--|
| APPLICATION | Seating |
| CONTENT | 49% Rayon, 48% Post-Consumer Recycled Polyester, 3% Nylon |
| FINISH | PFOA-Free Stain Resistant |
| BACKING | Acrylic |
| WIDTH | 53" |
| REPEAT | ¼" V, 1¼" H |
| ABRASION | 100,000 Double Rubs, Wyzenbeek* |
| FLAMMABILITY | CA TB 117-2013 |
| WEIGHT | 26.2 Oz Per Linear Yard |
| ORIGIN | United States |
| ENVIRONMENTAL | SCS Indoor Advantage™ Gold Contains Recycled Content FR Chemical Free Prop 65 Chemical Free |
| MAINTENANCE | S – Clean with Mild, Dry Cleaning Solvent |
| CUSTOM FINISHES | Alta; Alta Food & Beverage; Nanotex; Nanotex with Impermeable Barrier |
| PRICE GROUP | 7 |
| NET PRICE | \$80 Per Yard |

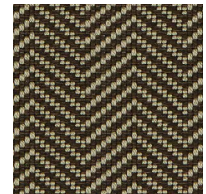
*Abrasion test results exceeding ACT Performance Guidelines are not an indicator of product lifespan. Multiple factors affect fabric durability and appearance retention.



22401 Olivine



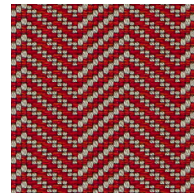
22402 Camel



22403 Earthen



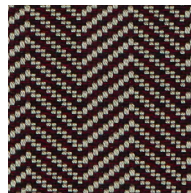
22404 Caribbean Sea



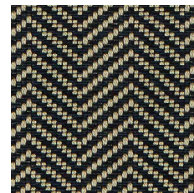
22405 Vermilion



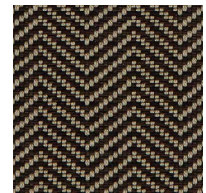
22406 Denim



22407 Bordeaux



22408 Prussian Blue



22409 Dark Sienna

Maintenance Guideline - S

MAINTENANCE CODE

S – Clean with Mild, Dry Cleaning Solvent

REGULAR MAINTENANCE

Vacuum regularly using the proper attachment to avoid pilling.

GENERAL RECOMMENDATIONS

Treat stains promptly. The longer a stain remains on the textile, the more difficult it will be to remove. A professional furniture cleaning service is recommended.

Always pre-test any cleaning method in an inconspicuous area.

Several light applications of a cleaning agent are less harmful than a single concentrated application. Repeat stain treatment several times if necessary.

Never use heat to clean textiles. Heat can set stains.

Do not use agents containing bleach. These agents may cause discoloration over time.

Do not oversaturate the textile or let water pool in seams.

STAIN TREATMENT

Soak up any excess moisture immediately.

For oil and water-based stains, use a clean, soft, white cloth, a natural sponge, or a nylon, soft-bristle brush with a water-free dry cleaning solvent. Brush the stain with light, quick strokes. Avoid a scrubbing motion and work from the edge of the stain toward the center.

For insoluble stains (e.g. chewing gum, candle wax, etc.), use a plastic bag filled with ice to rub the stain until the substance becomes brittle. Use a clean, dull, flat knife to gently remove the substance.

Rinse stain treatment thoroughly with a natural sponge moistened slightly with cool, clean water and completely remove all cleaning solution residue as left over residue can attract soil over time.

Extra care should be taken when cleaning dark colors to avoid creating light marks that can be caused by color transfer.

Avoid excess rubbing to prevent discoloration and damage to the face of the material.

Do not saturate the surface.

Allow the textile to dry thoroughly and vacuum before using.

The information above is a guide to help in the maintenance of Geiger Textiles. Geiger can neither guarantee, nor take responsibility for specific results.

Under no circumstances shall Geiger be liable for any incidental, consequential, or other damage resulting from negligence, misuse, mishandling, or exposure of any chemicals used in connection with maintenance. Information relating to chemicals/cleaning solvents, environmental use, and human exposure should be reviewed with appropriate suppliers.

All label instructions on their use and precautions should be followed.